

BLISS CLASSIC



ELECTRO SAILPLANE

Manufactured by:

TOPMODEL CZ

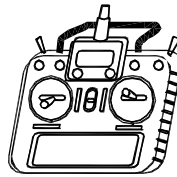
679 05 HABRŮVKA 100 - CZECH REPUBLIC

www.topmodelcz.com

e-mail: info@topmodelcz.cz

Order N°: 020136

Radio system you'll need :



ailerons - 2 servos
elevator
rudder
motor



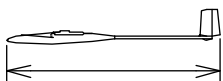
AXI 2217/16 V2 LONG



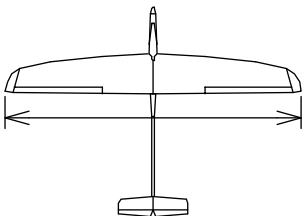
3S Lixx



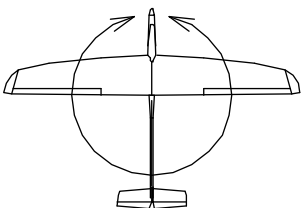
MH 32mod.



1195mm



1970mm



35,8dm²

21-23,7g/dm²



0,75 - 0,85kg

*Není-li uvedeno jinak, všechny
neoznačené míry jsou v milimetrech*
**UNLES STATED, ALL DIMENSIONS
ARE IN MILIMETERS**

Položka	Název dílu	Materiál/rozměr	Volně/ks	Balíček/ks
	montážní návod		01	
1A	gondola trupu	laminát	01	
1B	nosník ocasních ploch	laminát	01	
1-1	motorová přepážka	sklotextit 2mm		01
1-2	držák serva výškovky	překližka 4x37x41mm		01
1-3	držák bovdenů	balsa 3x6x40		01
1-4	vstup vzduchu	ABS		01
1-6	ostruha	sklotextit 1mm		01
2	křídlo	balsa konstrukční	03	
2-1	křídélko	balsa	02	
2-2	šroub křídla	M4x20mm		02
2-21	aretační kolík	laminát Ø2x22mm		02
2-25	aretační kolík	laminát Ø4x40mm		01
2-3	matice křídla	Al M4		02
2-31	podložka matice	překližka 3x20x35mm		01
2-4	držák serva	překližka 8x12mm		04
2-41	krytka serva	ABS		02
2-5	táhlo křídélka	drát M2		02
2-7	vidlička	plast L=17		02
2-8	páka křídélka	sklotextit 1mm		02
24	spojka křídla	ocel Ø4x155mm		02
3	VOP	balsa konstrukční	01	
3-5	táhlo výškovky	plast Ø2mm ocel Ø0,8mm	01+01	
3-6	koncovka táhla	MPJ 2764		01
3-8	páka VOP	sklotextit 1mm		01
4	SOP	balsa konstrukční	01	
4-5	táhlo směrovky	plast Ø2mm ocel Ø0,8mm	01+01	
4-6	koncovka táhla	MPJ 2764		01
4-8	páka VOP	sklotextit 1mm		01
6	kabina	laminát	01	
6-1	zajištění kabiny	vrut Ø2,9x6,5mm		01
7	obtisky			

Doporučené příslušenství

		kusů	objednací číslo www.topmodelcz.cz
servo	Servo ES 08 MD II	4	3531
motor	AXI 2217/16 V2 LONG	1	3EL105616V2L
regulátor	KAVAN PRO-30SB	1	KAV32.31010
kužel	TURBO 30/3,17/8	1	0201836
vrtule	CAM FOLDING 9/6"	1	1336.23.15
baterie	LiPo 3S 1,6 - 2Ah	1	

Před prvním startem zkontrolujte jestli nejsou díly modelu zkroucené.

Náprava je možná pomocí horkovzdušné pistole.

Dále zkontrolujte polohu těžiště, smysl a velikost výchylek kormidel.

Part #	Part name	Material/dimensions	Loose	In bag
	building instruction		01	
1A	fuselage front part	fibreglass	01	
1B	fuselage tube	fibreglass	01	
1-1	motor mount	fibreglass		01
1-2	servo tray	plywood 4x37x41mm		01
1-3	link support	balsa 3x6x40mm		01
1-4	air hole cover	ABS		01
1-6	tail skid	fibreglass 1mm		01
2	wing	balsa assembly	03	
2-1	aileron	balsa	02	
2-2	wing fixing screw	plastic M4x20mm		02
2-21	centering pin	fibreglass Ø2x22mm		02
2-25	centering pin	fibreglass Ø4x40mm		01
2-3	nut	Al M4		02
2-31	nut mount	plywood 3x20x35mm		01
2-4	servo mount	plywood 8x12mm		04
2-41	wing servo cover	PSH 0,5mm, Ø58mm		02
2-5	aileron pushrod	steel M2		02
2-7	clevis	plastic l-17mm/pin 1mm		02
2-8	aileron horn	fibreglass plate 1mm		02
24	wing joiner	steel Ø4x155mm		02
3	elevator	balsa assembly	01	
3-5	elevator link	plastic Ø2mm steel Ø0,8mm	01+01	
3-6	screw-lock pushrod connector	MPJ 2764		01
3-8	elevator horn	fibreglass 1,5mm		01
4	rudder	balsa assembly	01	
4-5	rudder link	plastic Ø2mm steel Ø0,8mm	01+01	
4-6	screw-lock pushrod connector	MPJ 2764		01
4-8	rudder horn	fibreglass 1,5mm		01
6	canopy	fibreglass	01	
6-1	canopy fixing	screw Ø2,9x6,5mm		01
7	stickers			

Recommended equipment

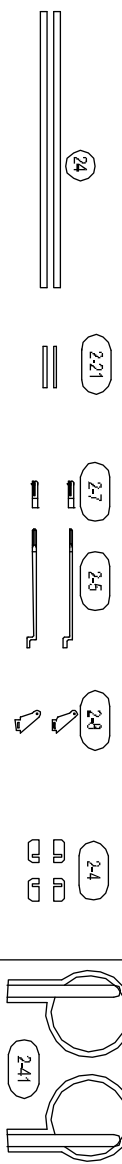
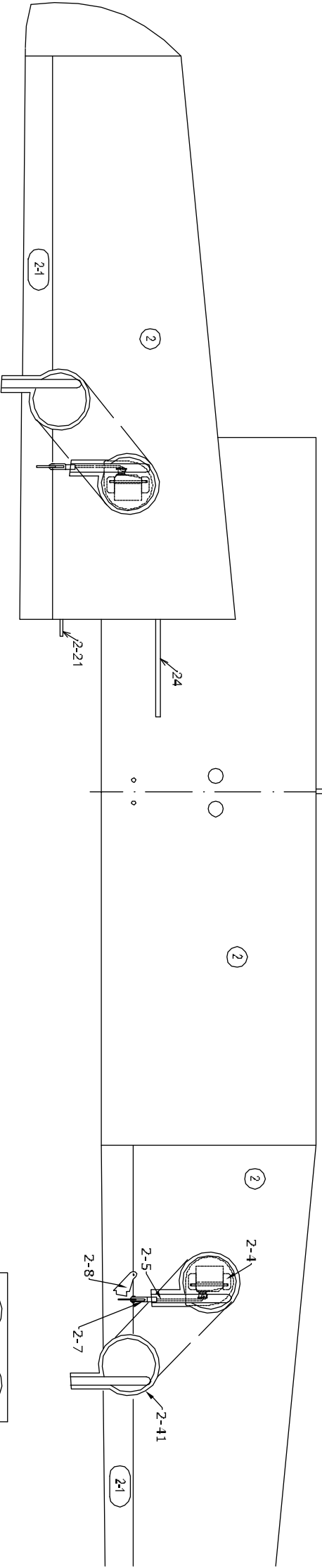
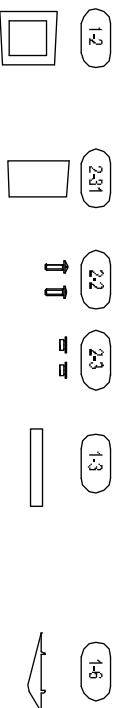
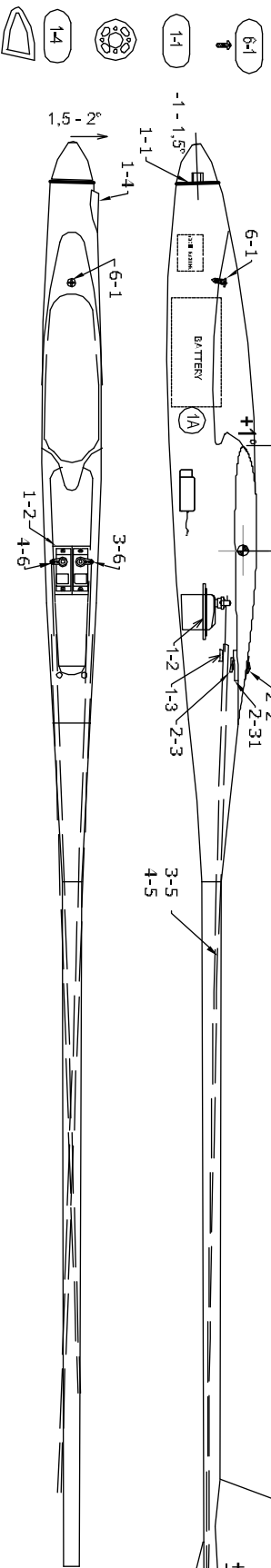
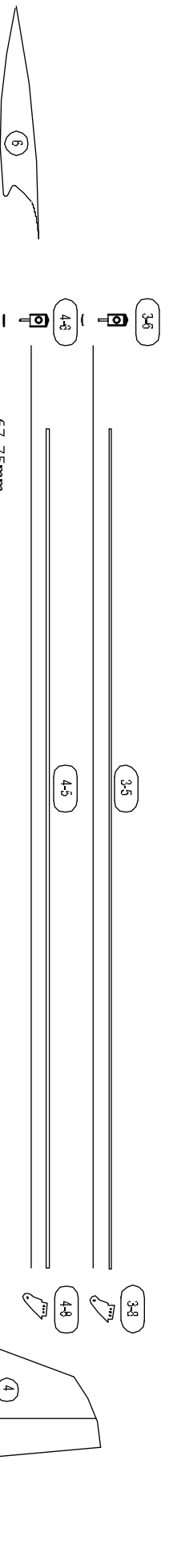
		Pieces		Item No. www.topmodelcz.cz
servo	Servo ES 08 MD II	4		3531
motor	AXI 2217/12 V2 LONG	1		3EL105615V2L
controller	KAVAN PRO-30SB	1		KAV32.31010
spinner	TURBO 30/3,17/8			02030328TZ
propeller	CAM folding 9/6"	1		1336.23.15
battery	LiPo 3S 1,6 - 2Ah	1		

ATTENTION!

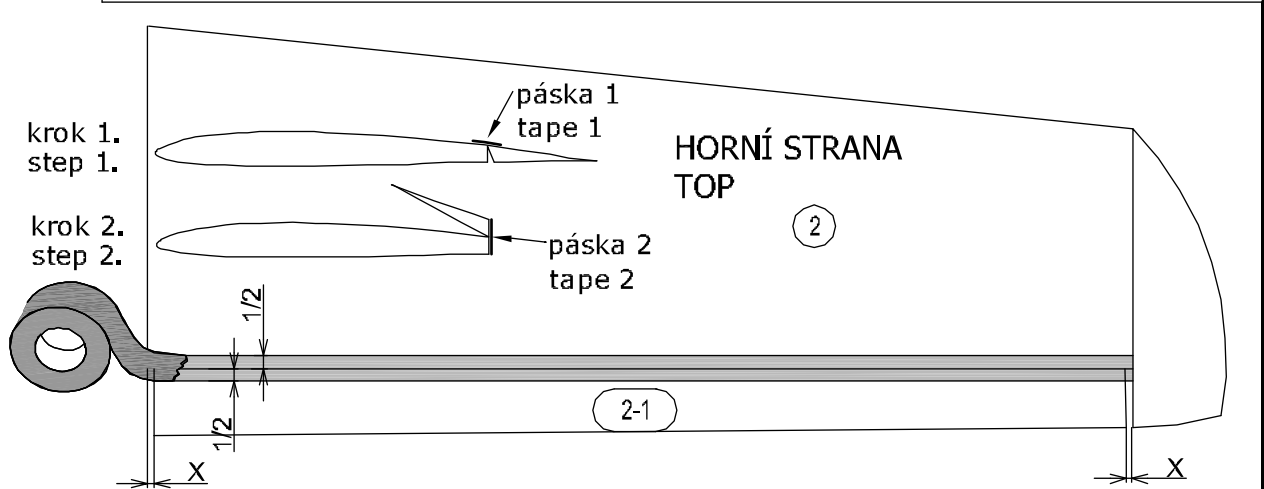
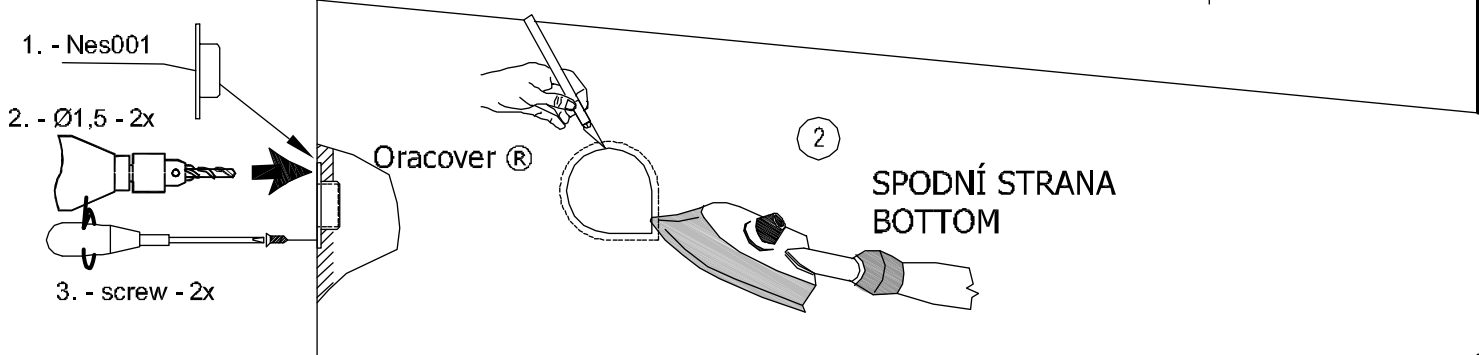
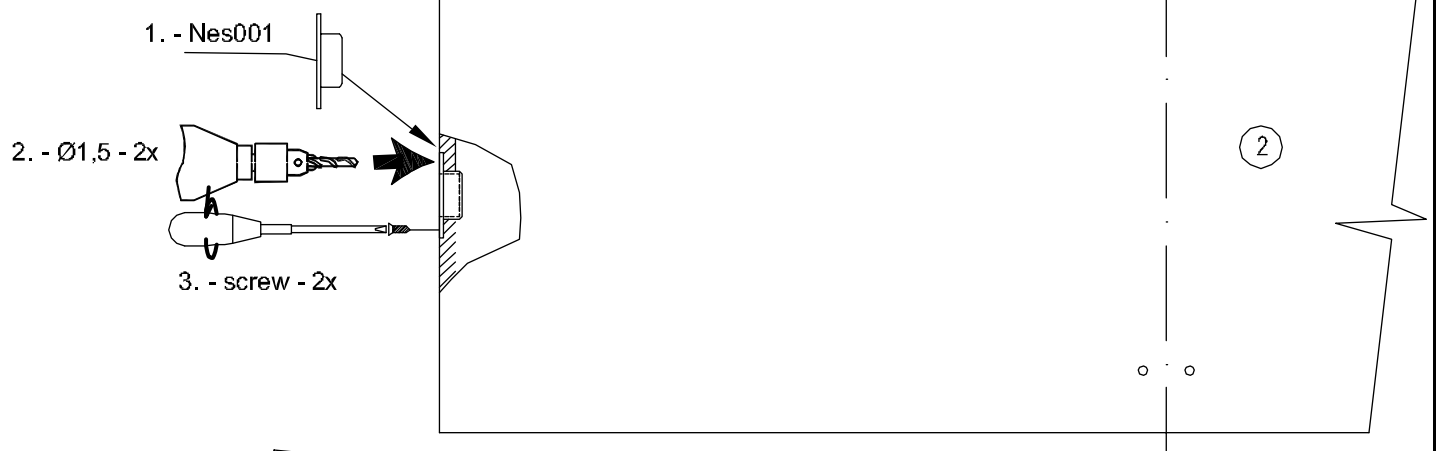
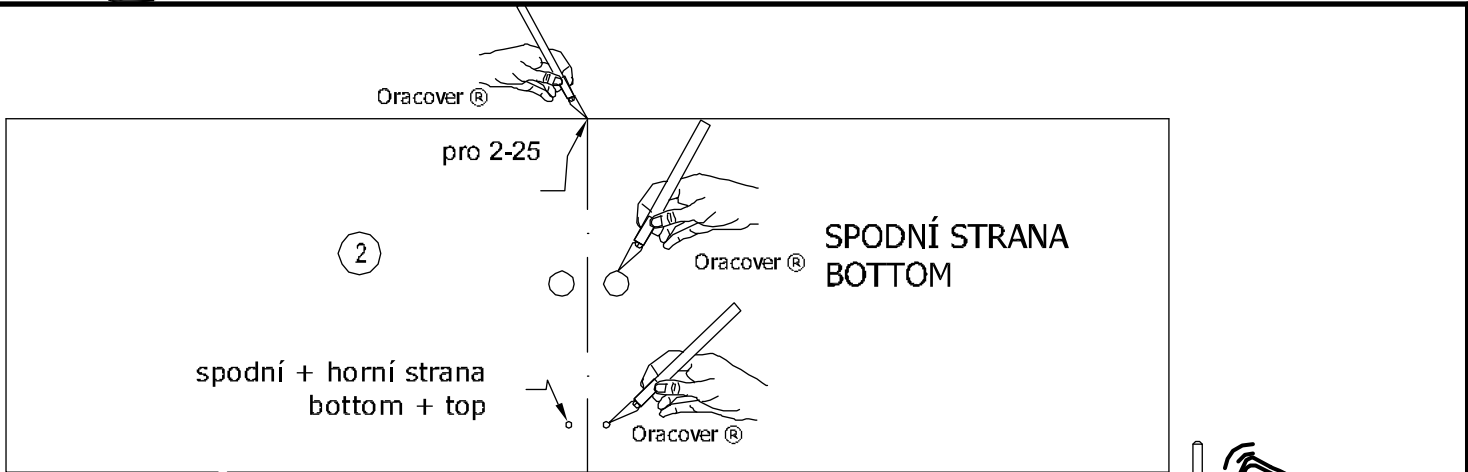
This model construction kit is not a toy and is not suitable for children under the age of 14. Incorrect use of this model could cause material damage or personal injury. You are fully responsible for your actions when you use this model.

Fly at a safe distance from occupied zones. Before switching on the radio, be sure, that no one else is using the same frequency as you !

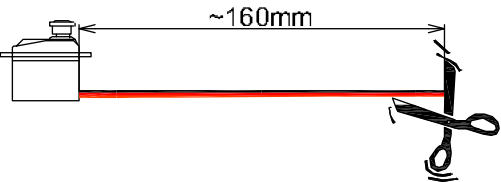
Before first take-off check up please the center of gravity, the sense and size of the control surface angle and if model aeroplane parts aren't crooked. The reparation is possible through the use of hot-air dryer.



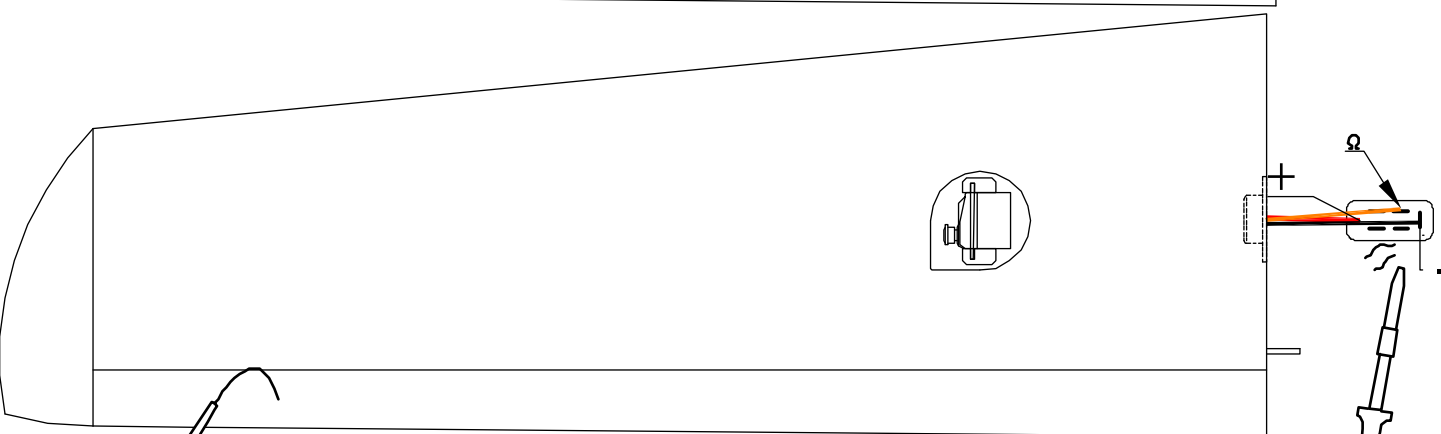
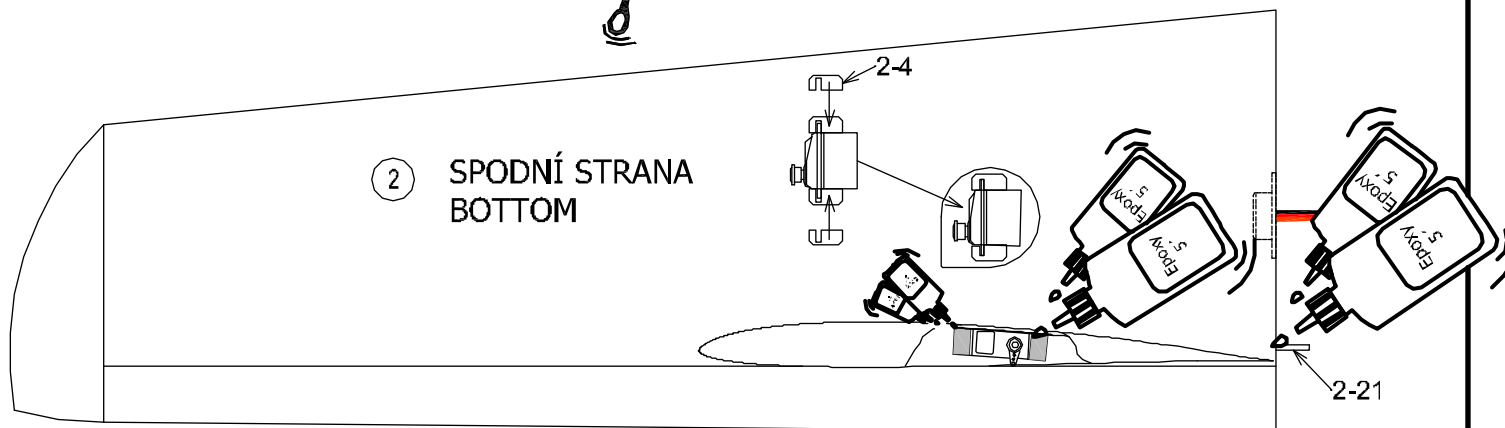
BLISS CLASSIC
AVO



Serva křidélek
Ailerons servo

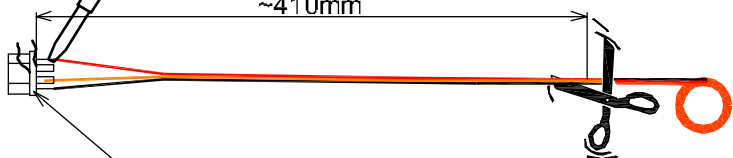


② SPODNÍ STRANA
BOTTOM

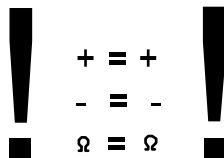


Pro serva křidélek
For ailerons servo

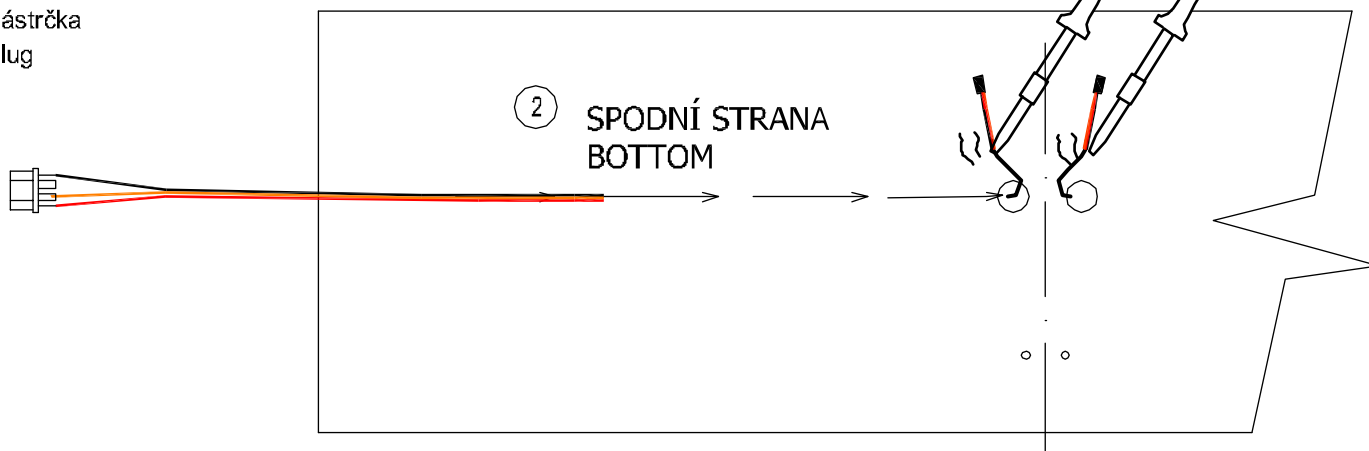
~410mm

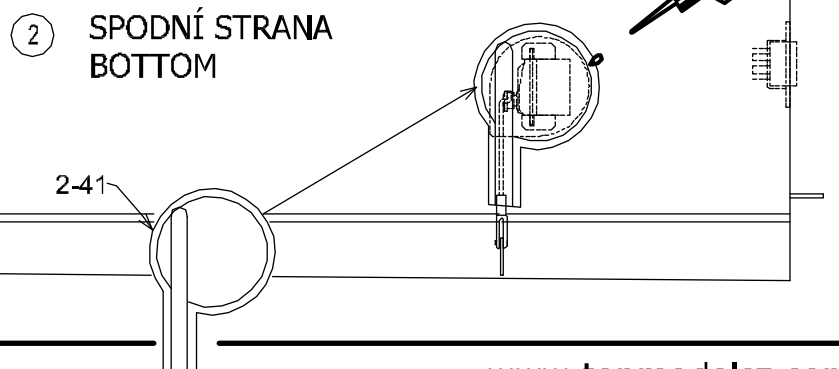
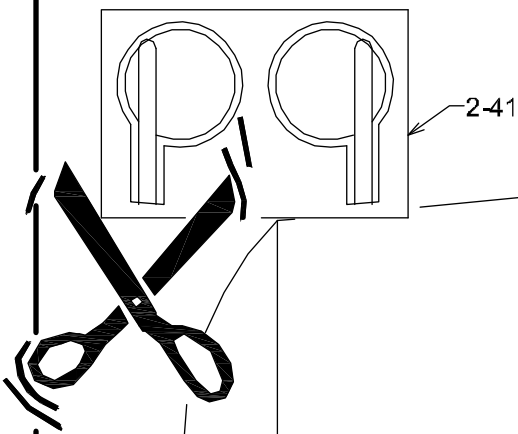
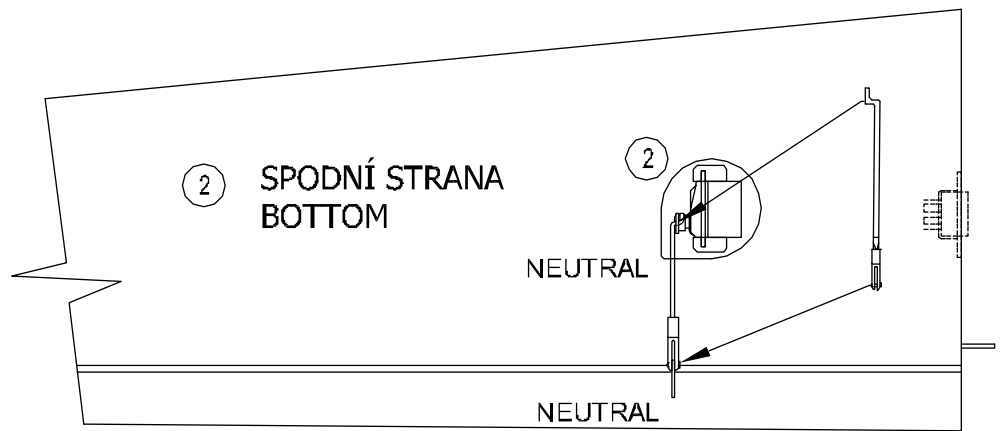
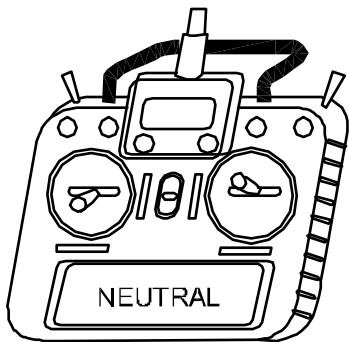
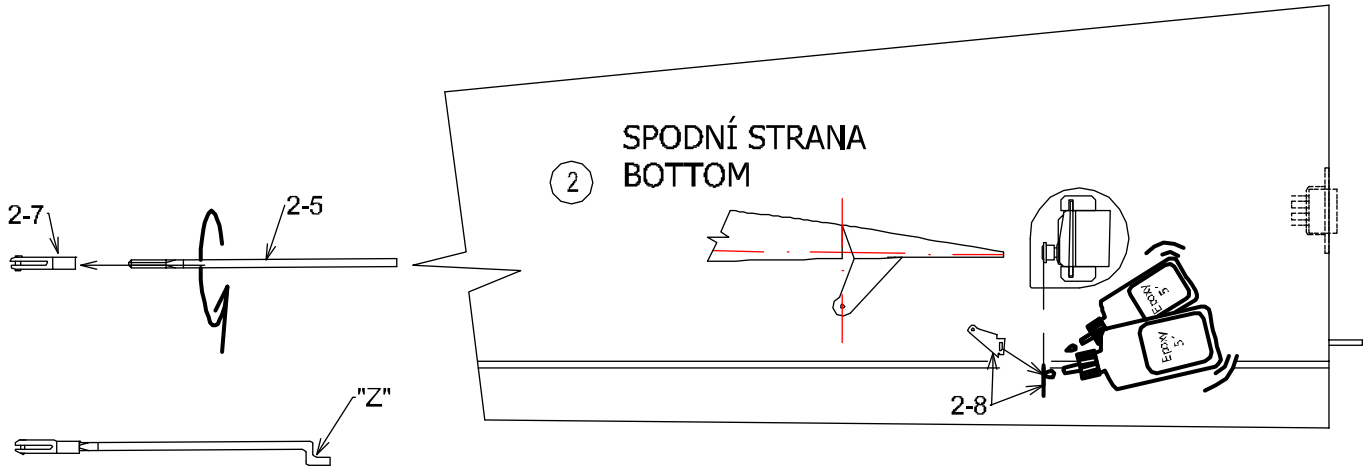
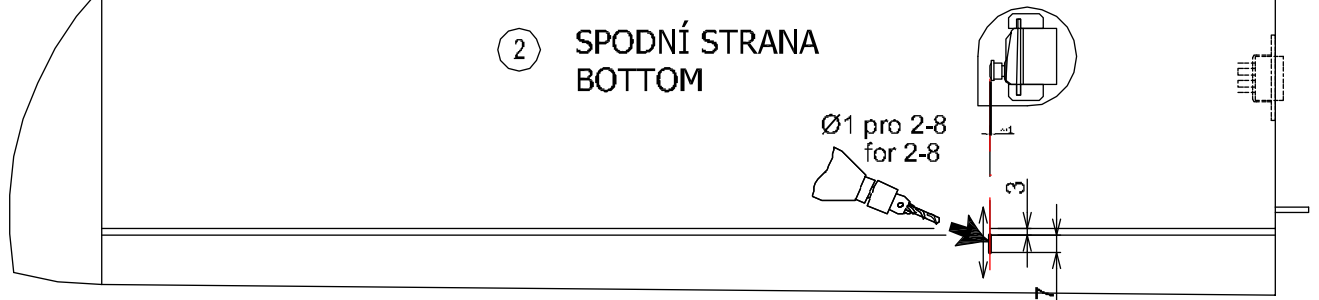


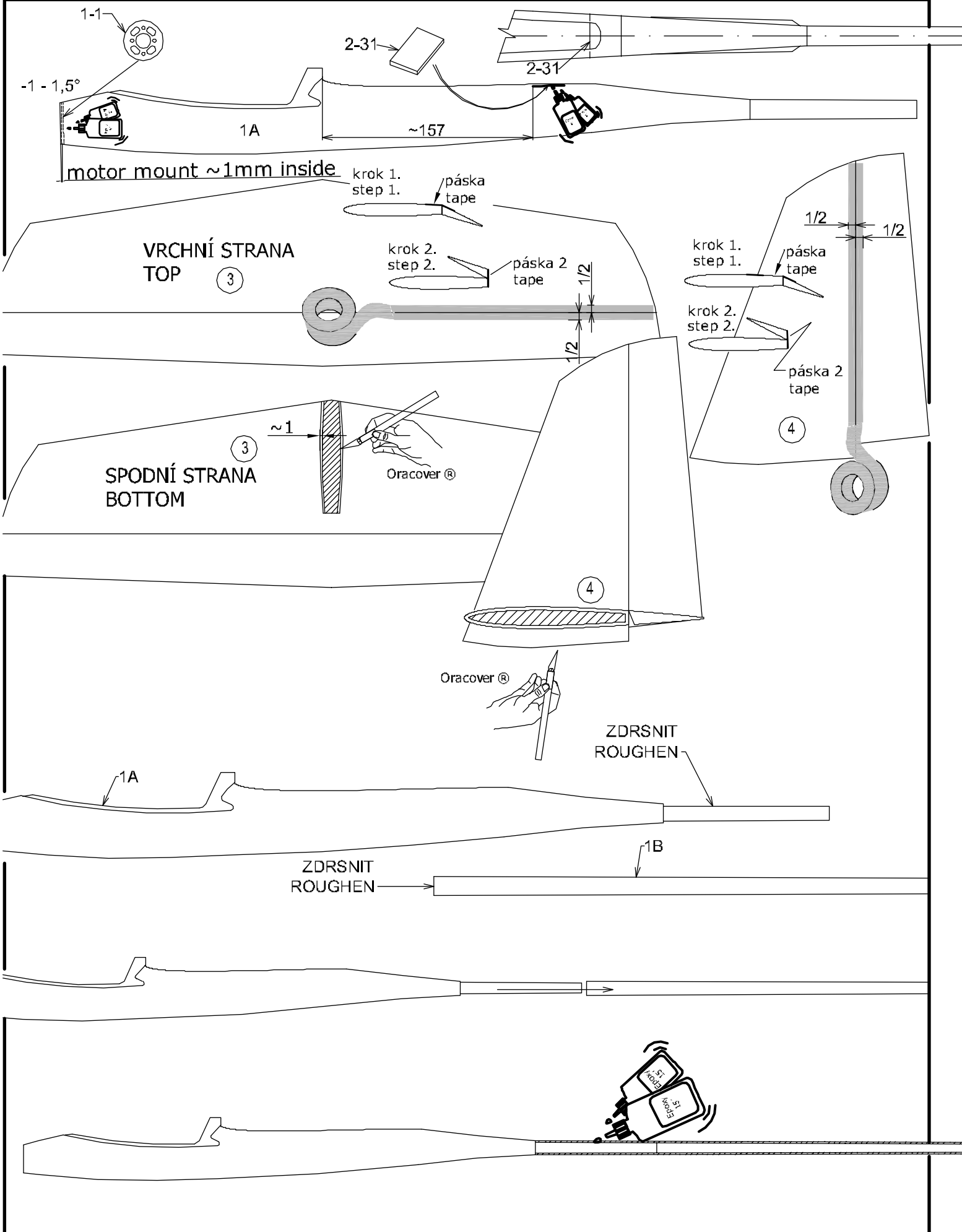
MULTIPLEX 6 PIN - 2x (L + R)
zástrčka
plug

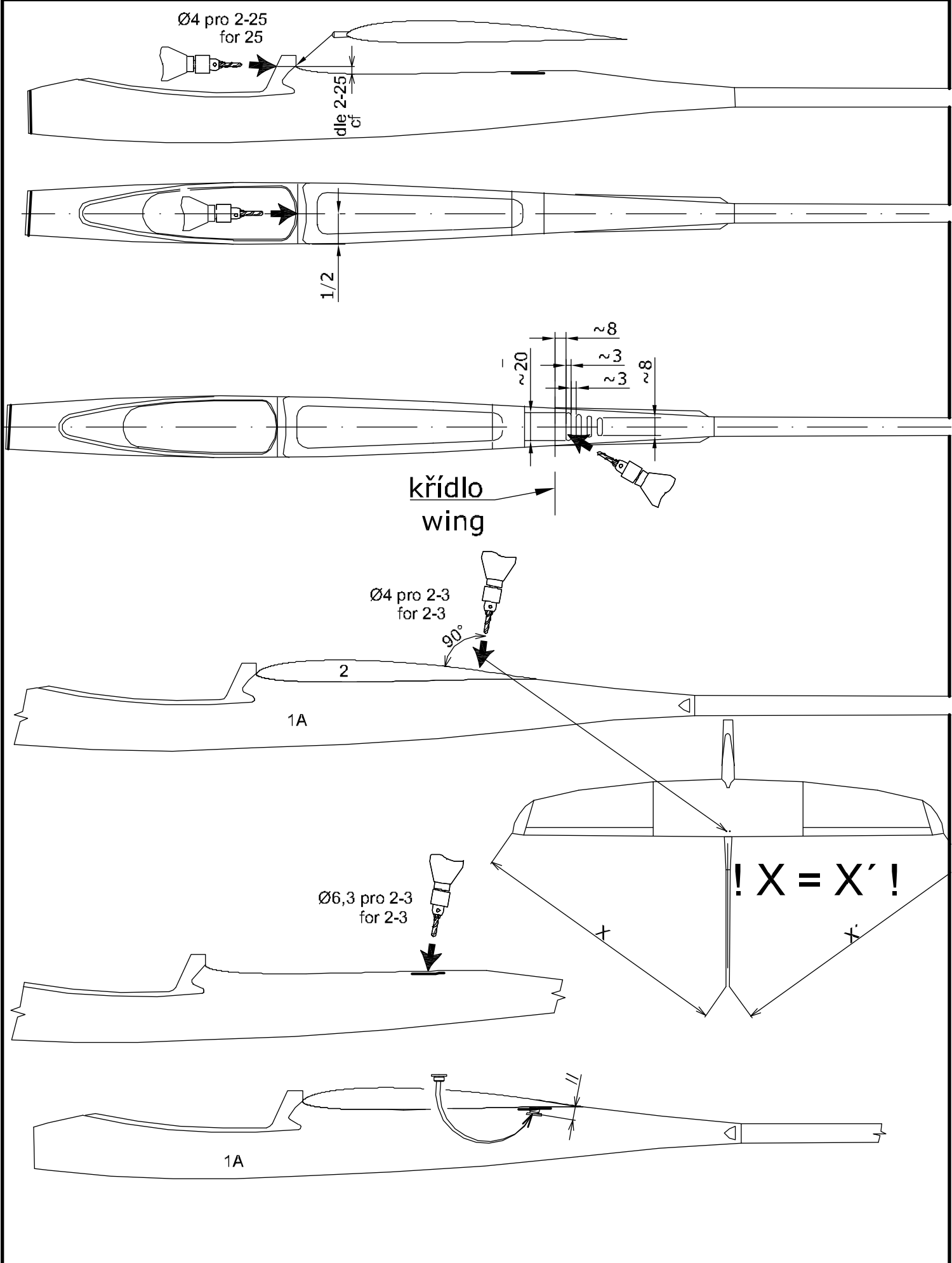


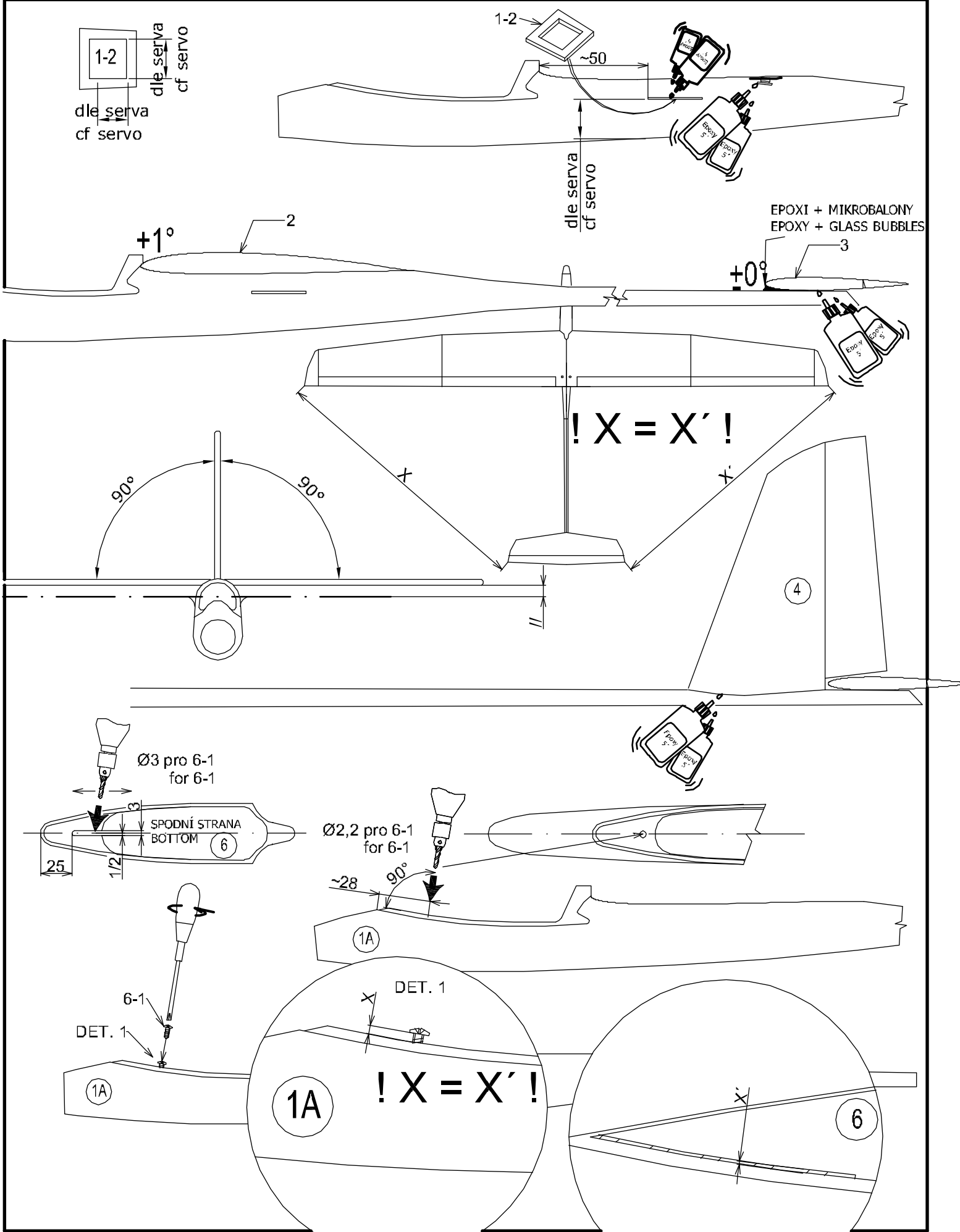
② SPODNÍ STRANA
BOTTOM



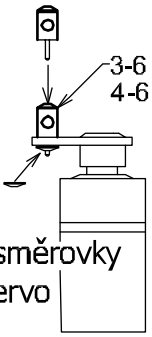
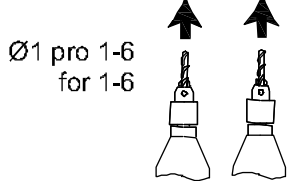
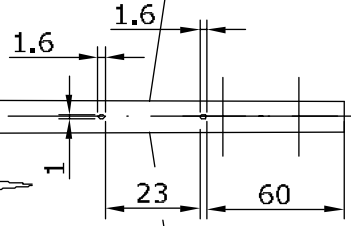






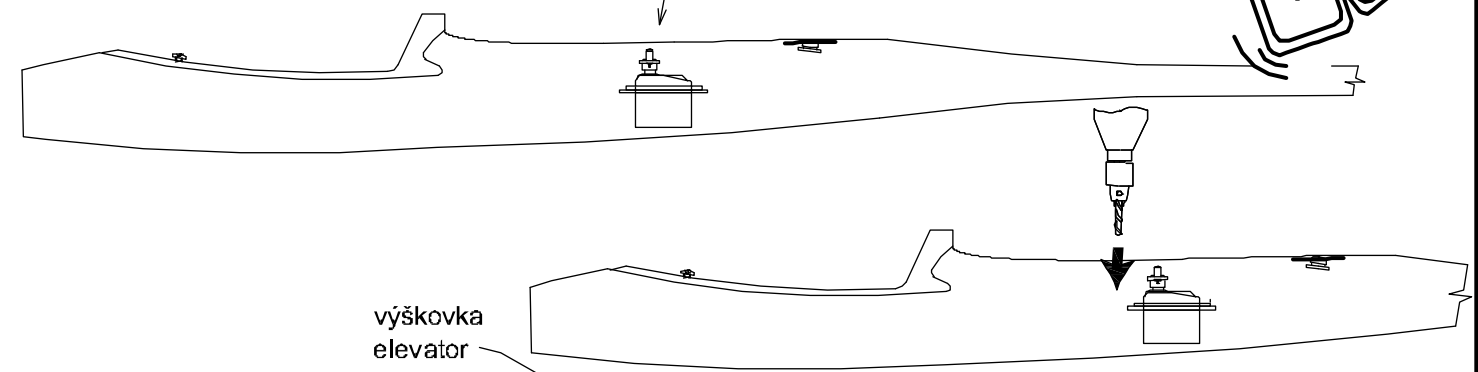
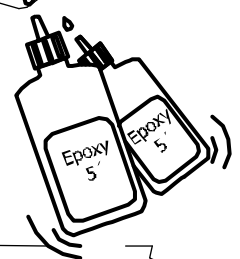


SPODNÍ STRANA
BOTTOM



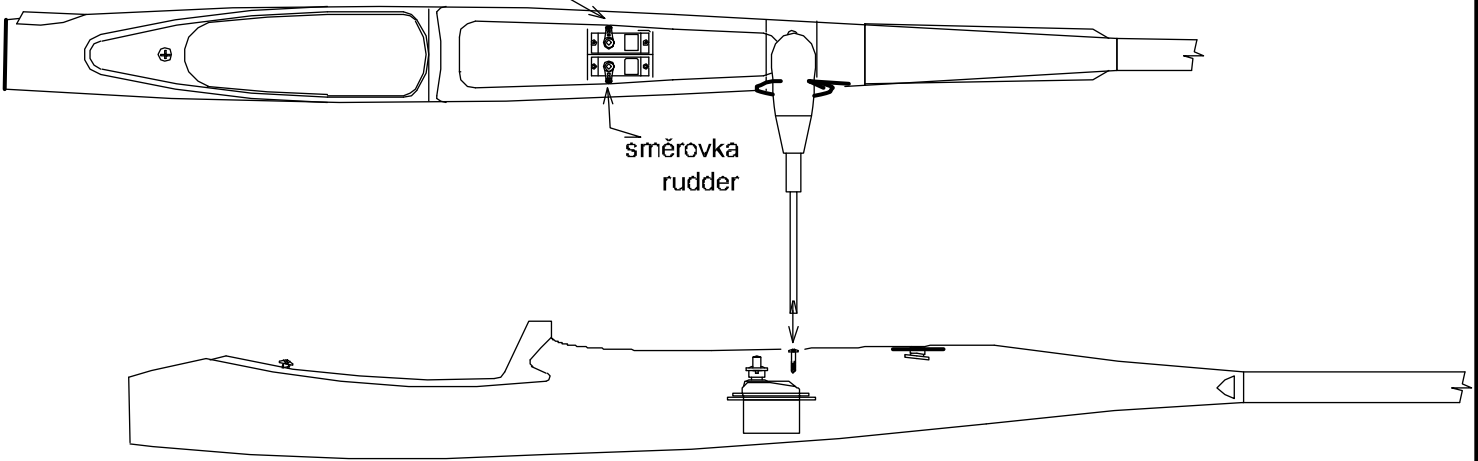
servo výškovky a směrovky
elevator+rudder servo

1-6



výškovka
elevator

směrovka
rudder



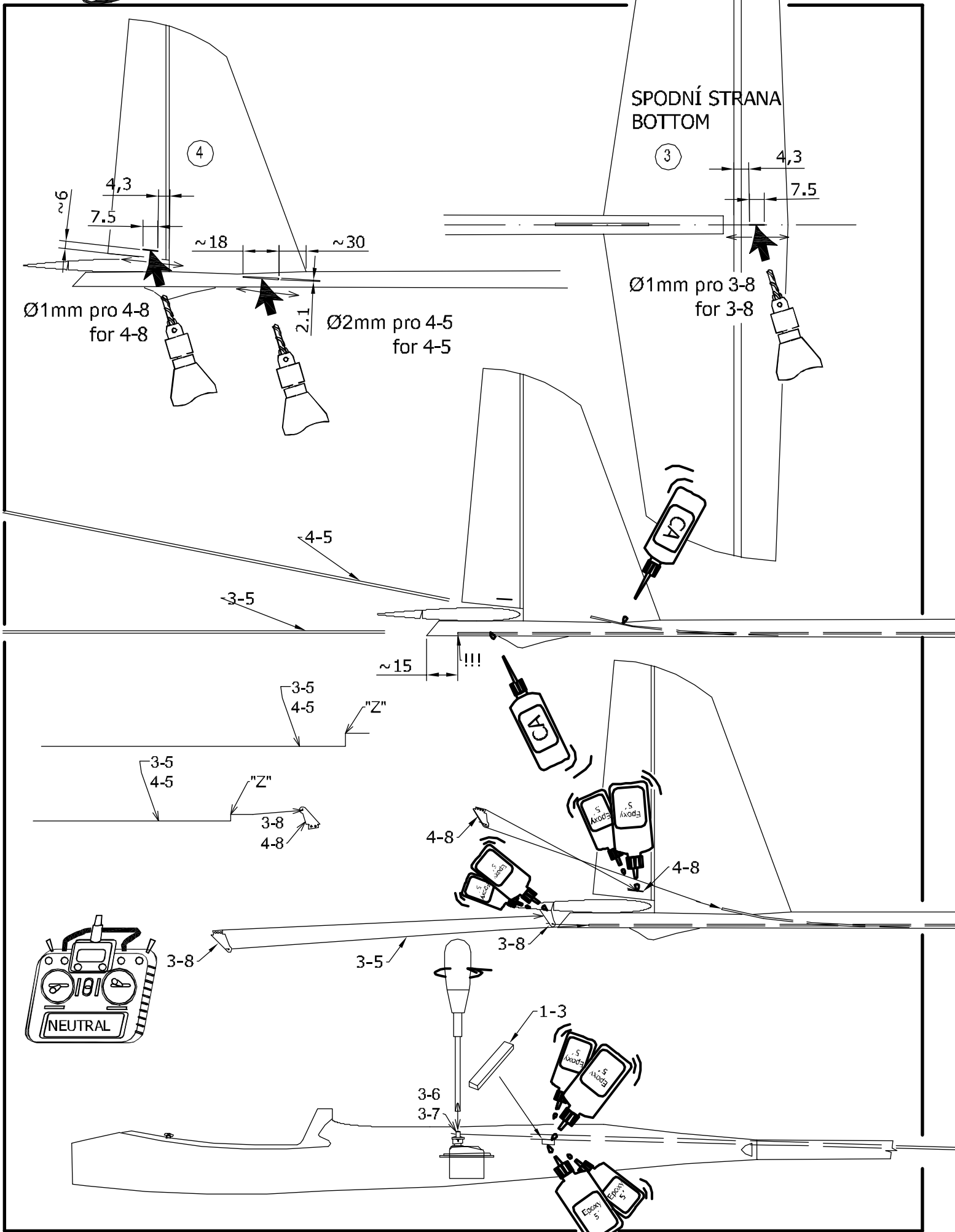
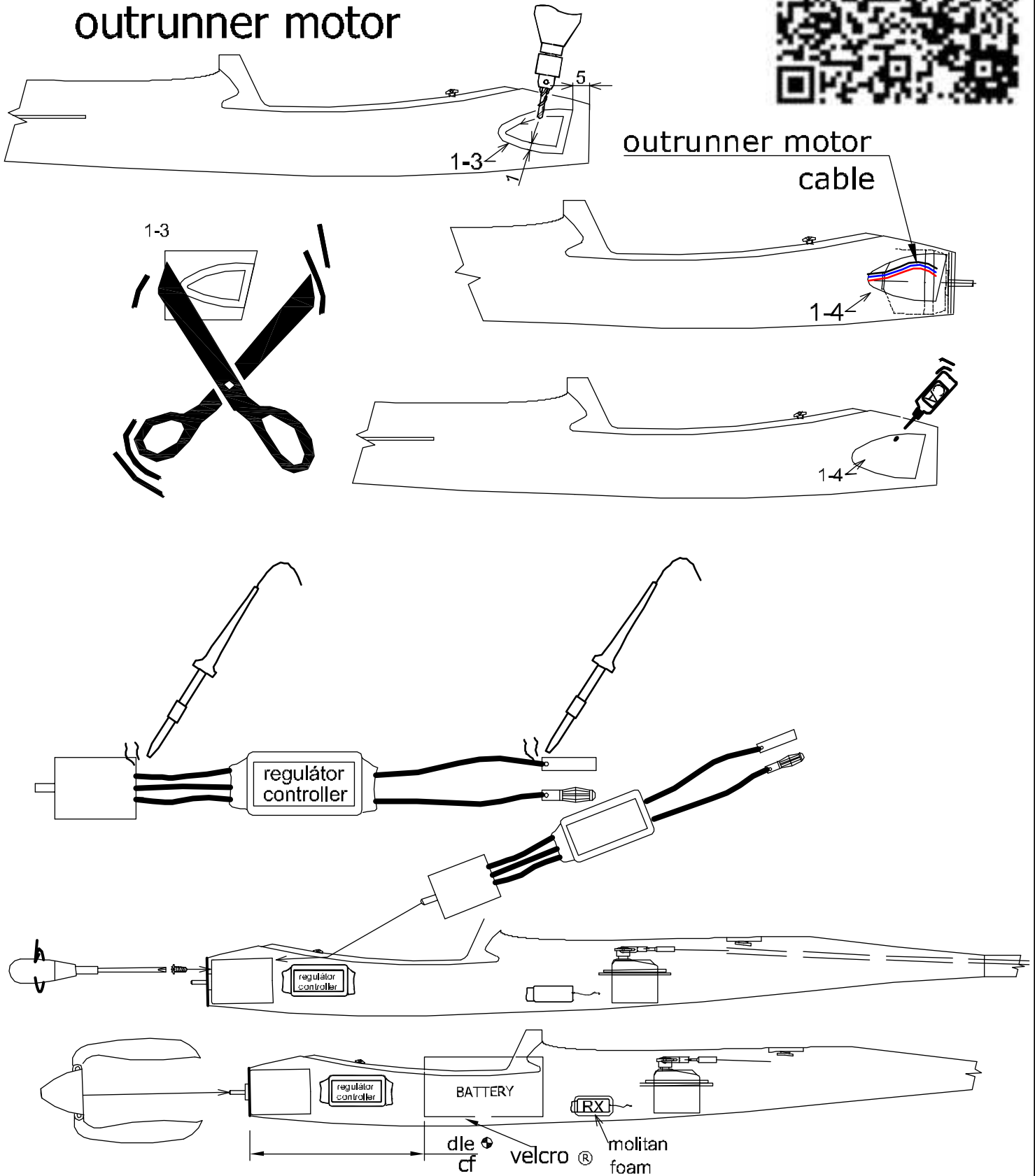


FOTO MANUÁL MONTÁŽE MOTORU S ROTAČNÍM PLÁŠTĚM
PICTURED MANUAL OF OUTRUNNER MOTOR ASSEMBLY



outrunner motor



Doporučené výchylky kormidel :

Křídélka: nahoru 7-9mm - expo 30%
 dolů 3-5mm - expo 30%
 Výškovka: nahoru 8-10mm - expo 30%
 dolů 8-10mm - expo 30%
 Směrovka: +- 15-20mm - expo 30%

Recommended rudder angles :

Ailerons: up 7-9mm - expo 30%
 down 3-5mm - expo 30%
 Elevator: Up 8-10mm - expo 30%
 down 8-10mm - expo 30%
 Rudder: +- 15-20mm - expo 30%

