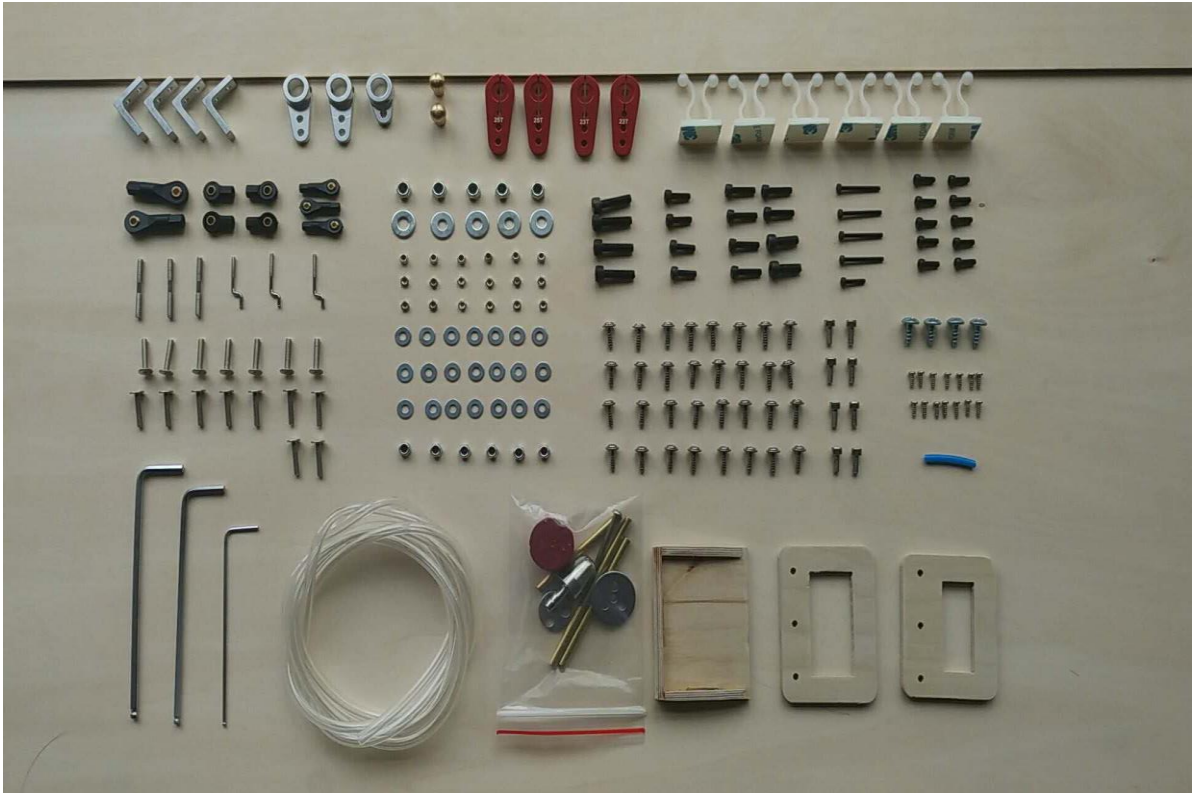


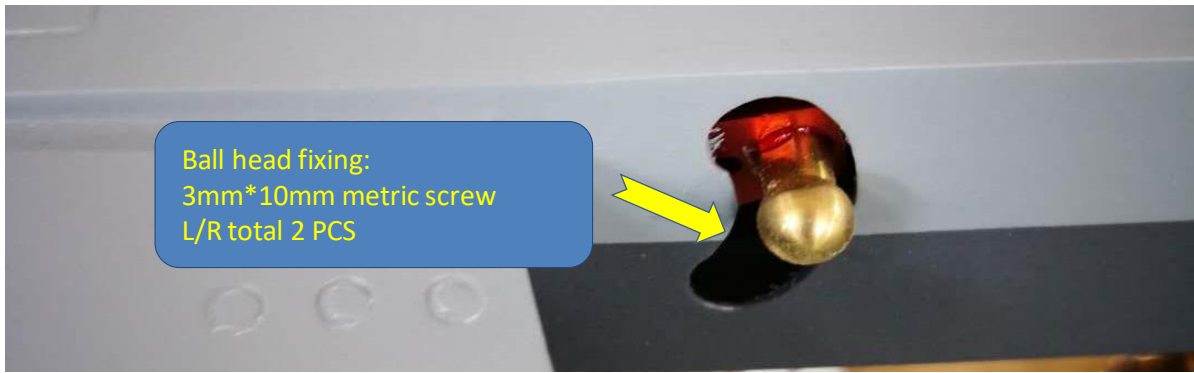
F16 Installation manual

List of parts

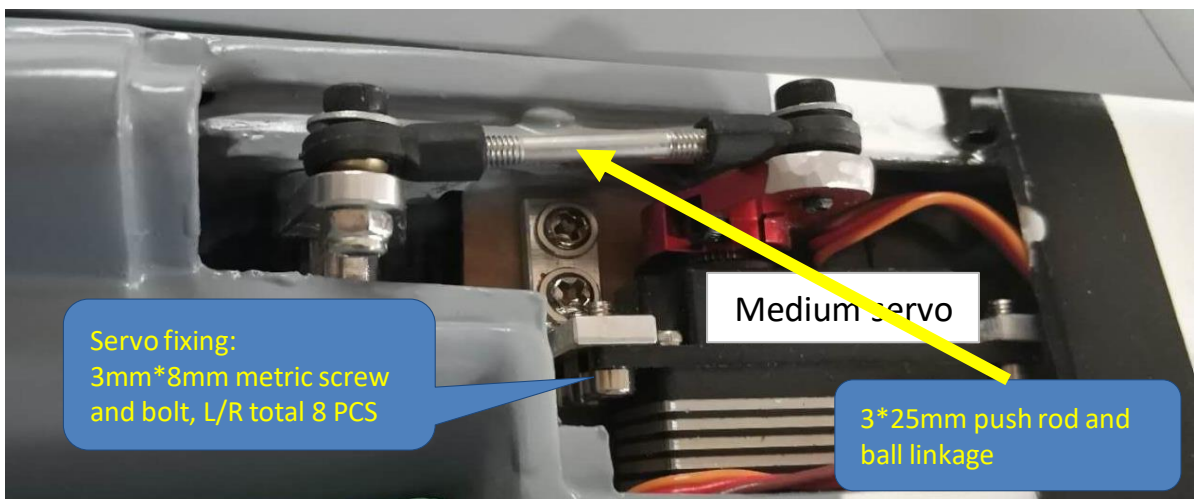
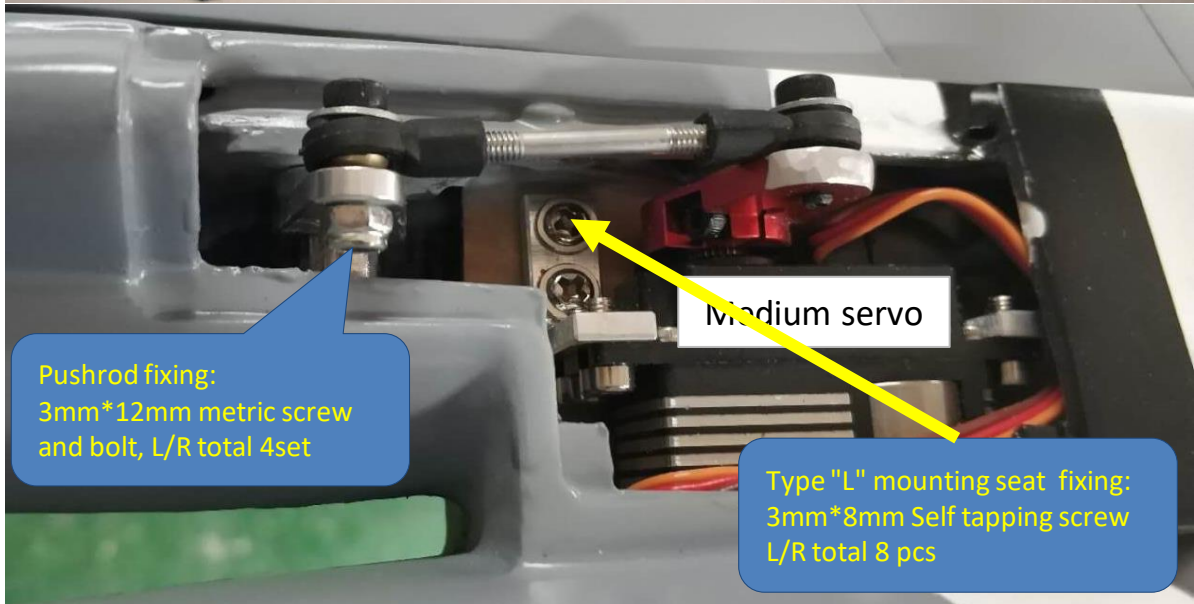


1、Aileron servo installation





2、Horizontal tail installation



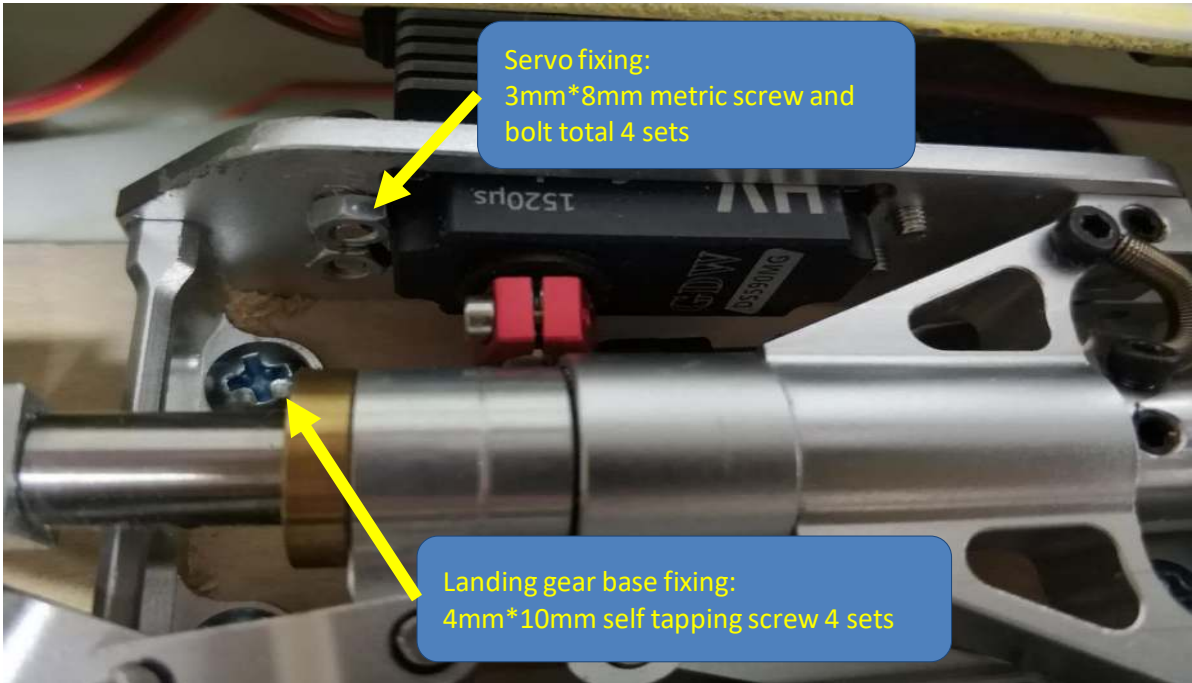
3、 Vertical tail installation



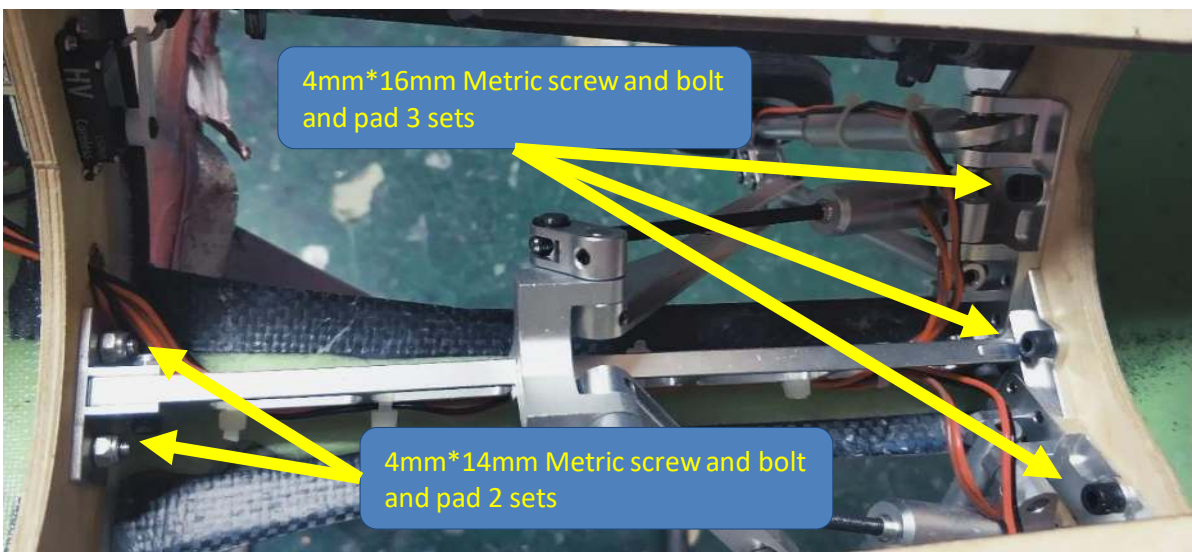
4、 landing gear and door parts



5、 Nose gear and servo installation

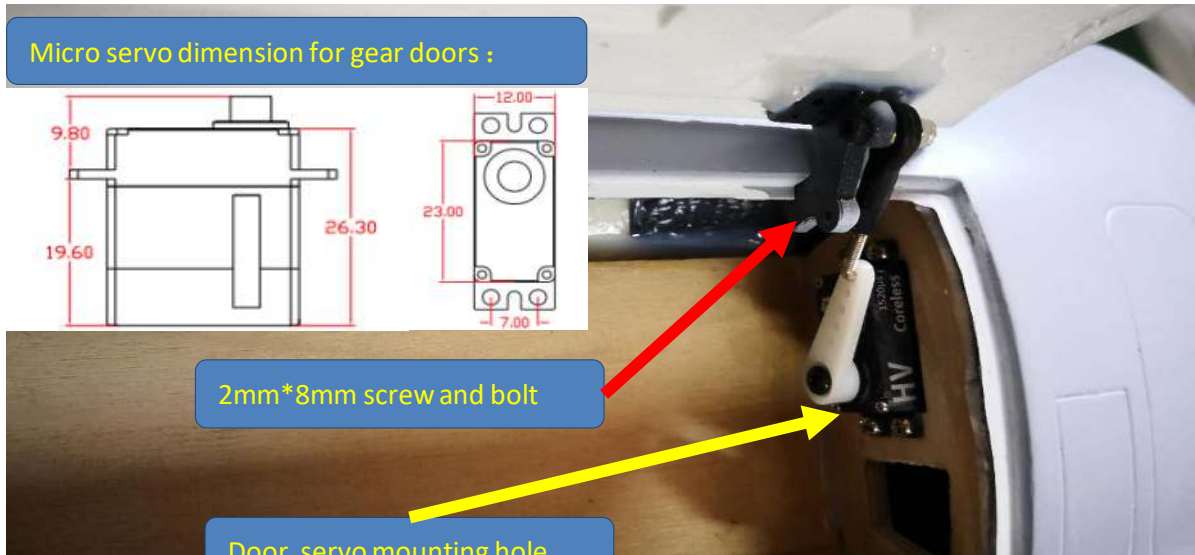
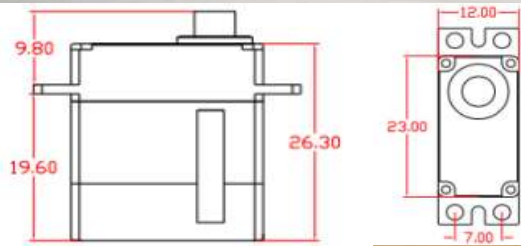


6、 Main gear installation



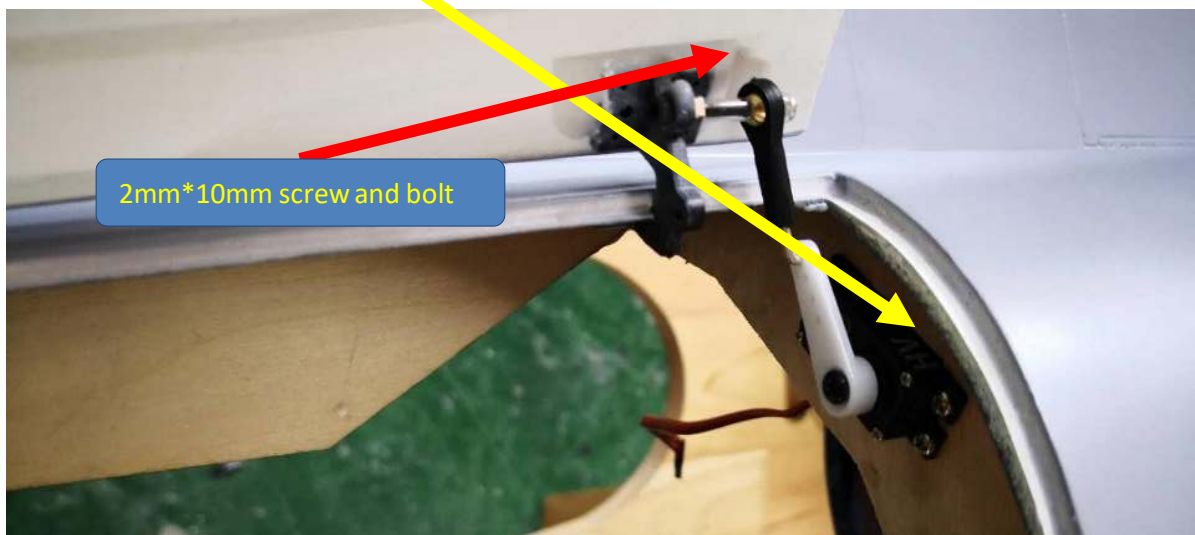
7、 Gear door servos installation

Micro servo dimension for gear doors :



2mm*8mm screw and bolt

Door servo mounting hole



2mm*10mm screw and bolt

8、CG position

