

H·KING

FBS

SMM PP KIT

INSTRUCTION MANUAL



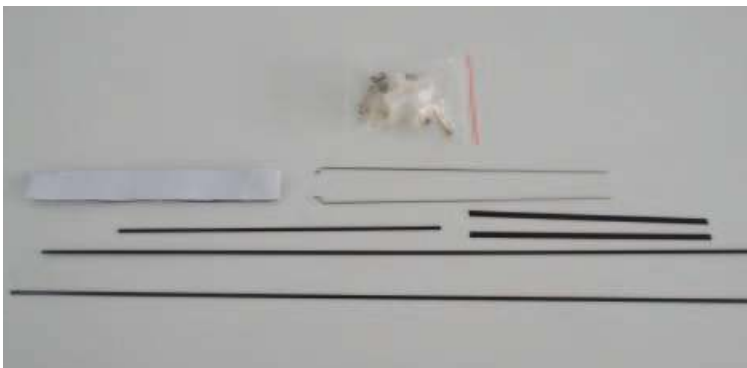
**GLUE
-N-GO**





Packing list:

- 1: PP F35 fuselage *1
- 2: Carbon strip for fuselage *3
- 3: Carbon strip for vertical tail *2
- 4: Pull rod *2
- 5: Motor mount *1
- 6: Quick rod adjuster *2
- 7: Hinge *2
- 8: M3 screws *4
- 9: wood strip *2
- 10: Hook and loop tape *1



Tools:

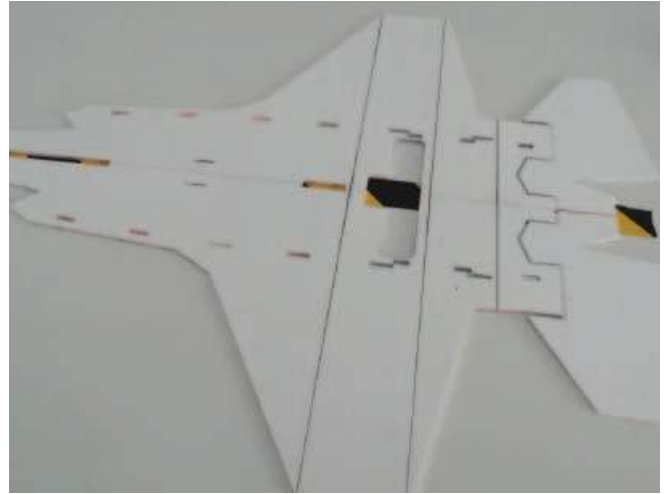
- 1: 1.5mm allen wrench
- 2: Phillips screwdriver
- 3: Modelling knife
- 4: Wire cutters
- 5: Hot melt glue gun and glue sticks
- 6: Foam Glue
- 7: No.502 glue

Electronic equipment:

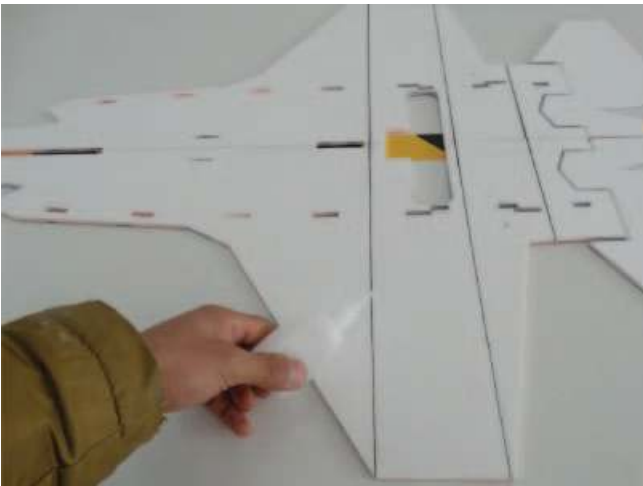
- Motor: 2208-2212-2216
2000KV-2600KV *1
- Prop: 5-6 inch *1
- ESC: 20-40A *1
- Servo: 8/9g *2
- Battery: 1300-2200mah 3S *1



Glue the 2 pcs horizontal fuselages using hot glue sticks.



Then put the 3 pcs carbon strips into horizontal fuselage using No.502 glue.



Stick the 2 pcs carbon strips on vertical tail using foam glue.



Applying foam glue on 2 pcs nose.



Important: Wait 3 mins after applying foam glue, then assemble the 2 pcs nose. Make sure 2 pcs nose trim. Especially for step.



Press the 2 pcs vertical fuselages into horizontal fuselage
Important: don't use glue!



Applying glue on 2 pcs vertical fuselages using hot glue sticks.
Important: just glue top side.



Then assemble bottom fuselage on vertical fuselage. Reinforce bottom fuselage using hot glue sticks after assembly.



Wait 3 mins. Then take down bottom fuselage with 2 pcs vertical fuselages.



Reinforce bottom fuselage using hot glue sticks inside.



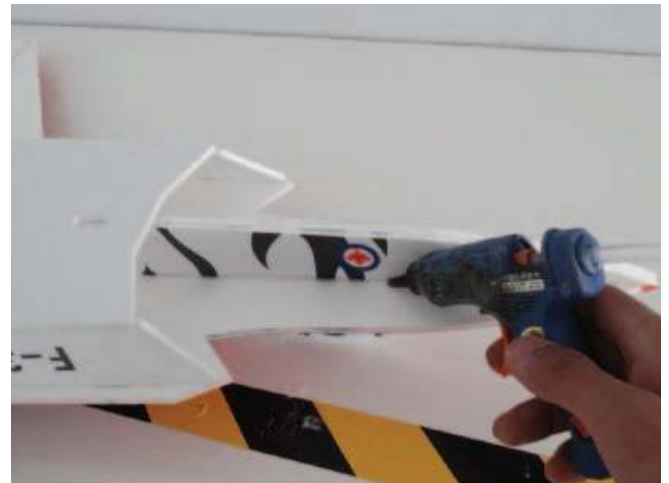
Then assemble vertical fuselage and bottom fuselage on horizontal fuselage using hot glue sticks.



Also don't forget to reinforce vertical fuselage using hot glue sticks.



Assemble the nose on fuselage using hot glue sticks or foam glue, make sure the motor mount location must be flat!



Reinforce nose using hot glue sticks after assembly.



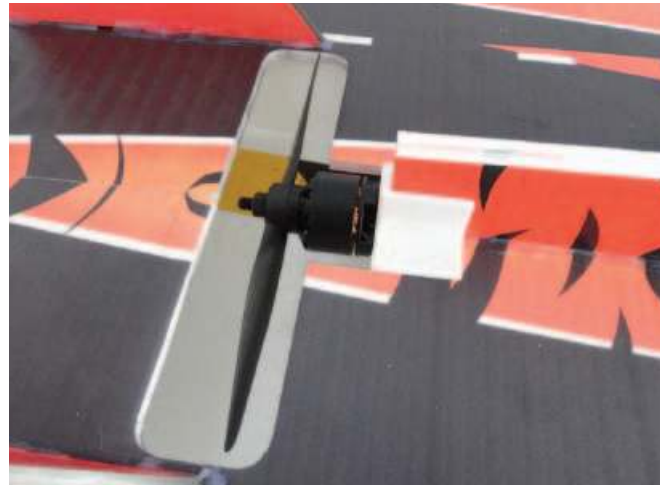
Install vertical tail on fuselage using hot glue sticks. Must use triangle foam board to make sure vertical tail's incline.



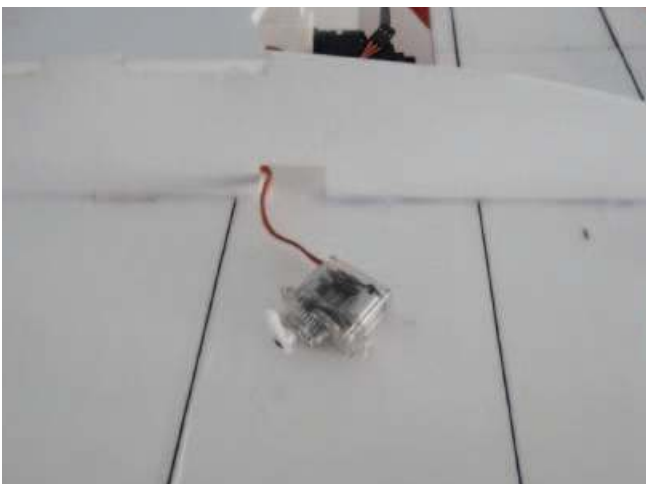
Assemble motor on motor mount using motor's screws.



Assemble prop on motor. Notice the prop's direction.



Assemble motor mount on fuselage, then reinforce motor mount using a little hot glue sticks.



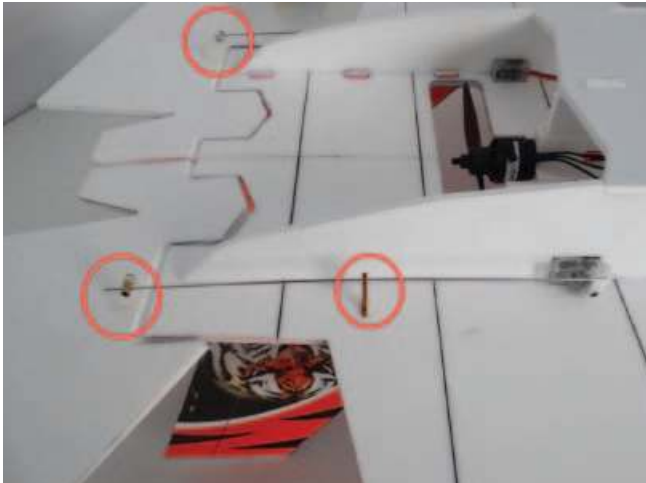
Install arm on servo and electrify all servos to make sure the arm perpendicular to servo. Then install arm screws. Install servo in the hole using hot melt glue.



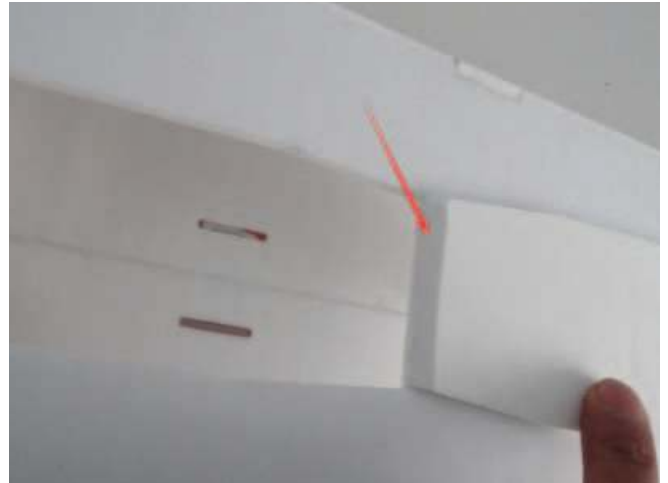
Install wood strip in the hole using No.502 glue.



Assemble Quick rod adjuster and install it in hinge, apply a little No.502 to the nuts.



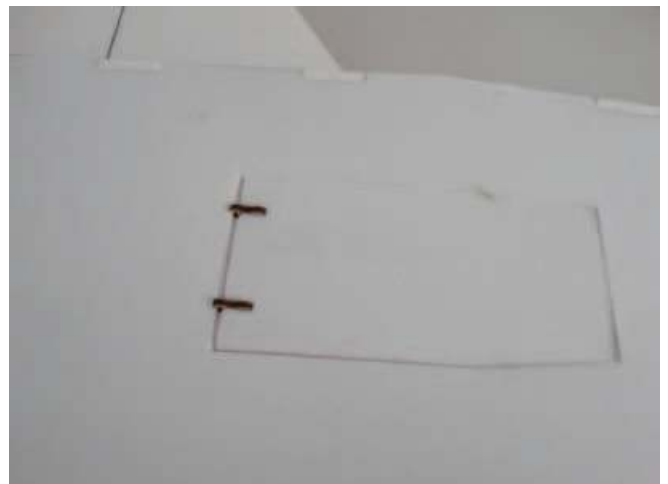
Install hinge into the hole on fuselage with foam glue. Notice must let pull rod through the wood strip's hole.



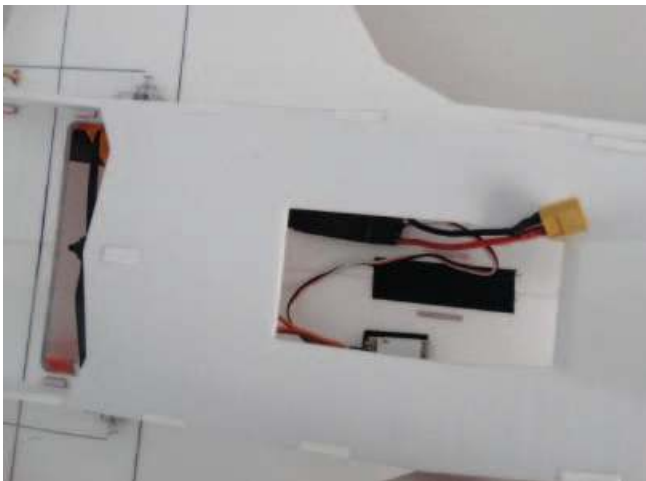
Cut bevel in the end of bottom cover using knife.



Install the 2 pcs wood clips in the bottom cover using foam glue.



Then the wood clip can block bottom fuselage when close.



Put on hook and loop tape on fuselage using foam glue. Then install ESC and receiver.



Use another hook and loop tape through the hole to fix battery.



C of G is on the front of the motor mount 11.5cm as shown in the picture above.



PP F35 just has tail control, so we need set delta wing mixed control on radio (Elevator and aileron mixed control). We advise set elevator parameter to 60/70 and set aileron parameter to 90/100 on radio.

Note





Made in China