

**AGE 14+**



# ***P-47 Thunderbolt "Passionate Patsy" PNP***

## ***750mm Wingspan RC Warbird with Retracts***

**OPERATIONS MANUAL**



**MOTIONRC**

**SKY1073-001**

# INDEX

Product Overview .....	1
Aircraft Specifications .....	1
Required Equipment.....	1
Included Parts.....	1
Assembly Instructions (Main wings Installation).....	2
Assembly Instructions (Horizontal Stab Installation) .....	3
Assembly Instructions (Rudder Installation) .....	4
Assembly Instruction (Propeller Installation) .....	4
Assembly Instructions (Control Horn and Servo Arm Settings) .....	5
Assembly Instructions (Battery Installation) .....	6
ESC Throttle Calibration .....	6
Aircraft Setup (Center of Gravity Location) .....	6
Aircraft Setup (Control Direction Testing) .....	7
Aircraft Setup (Control Throws and Dual Rates).....	8
Operational Safety Guidelines .....	9
ESC Setup & Safety Notes .....	9
Troubleshooting Guide.....	10
Trouble Shooting Guide .....	11
Pre-Flight Checklist .....	11
Spare Parts List.....	11

## Important Safety Information

**WARNING:** Failure to follow these instructions may result in property damage, collateral damage, or injury.

**Age Recommendation:** Not for children under 14 years. This is not a toy.

Read the **ENTIRE** instruction manual to become familiar with the features of this product before operating it. Failure to operate the model correctly can result in damage to the aircraft, personal property, or serious injury. Do not use incompatible components or modify this product in any way outside of the instructions provided.

### Safety Precautions and Warnings

- Always keep a safe distance from your model to avoid collisions or injury. This aircraft is controlled by radio signals that may be subject to interference outside your control, which can cause temporary loss of control.
- Always operate your model at a designated RC Flying field or club site and follow all laws and regulations for your area. These locations provide proper flying space away from buildings, vehicles, traffic, and people, and often have experienced pilots who are willing to assist if needed.
- Always follow the directions and warnings for this model and any support equipment (chargers, rechargeable batteries, etc.).
- Always keep chemicals, small parts, and electrical components out of the reach of children.
- Always avoid exposing electronics to water or moisture unless specifically designed for it.
- Never place any part of the model in your mouth — serious injury or death may occur.
- Never operate your model with low transmitter batteries.
- Always keep the aircraft in sight and under control. Power on the transmitter before connecting the aircraft battery.
- Always use fully charged batteries. Remove the battery before disassembly and after each flight.
- Always keep parts clean and dry, and allow all components to cool after operation before touching them.

## Product Overview

Thank you for choosing the Skynetic P-47 Thunderbolt "Passionate Patsy", a compact scale warbird featuring electric retracts and exceptional detail. This 750mm wingspan RC model is designed for quick assembly, stable flight performance, and enjoyable scale flying experience.

- ★ Durable EPO foam airframe with functional electric retracts.
- ★ Removable wings for fast setup, transport, and storage.
- ★ Highly detailed scale features including a clear canopy, molded pilot, armament, and pitot details.
- ★ Spacious top hatch simplifies battery swaps and in-field checks.
- ★ Ball-lyn connectors deliver smooth, accurate control response.
- ★ Stable, high-performance flight for experienced pilots.
- ★ Authentic 310<sup>th</sup> Fighter Squadron, 58th Fighter Group markings with a scale 4-blade prop.

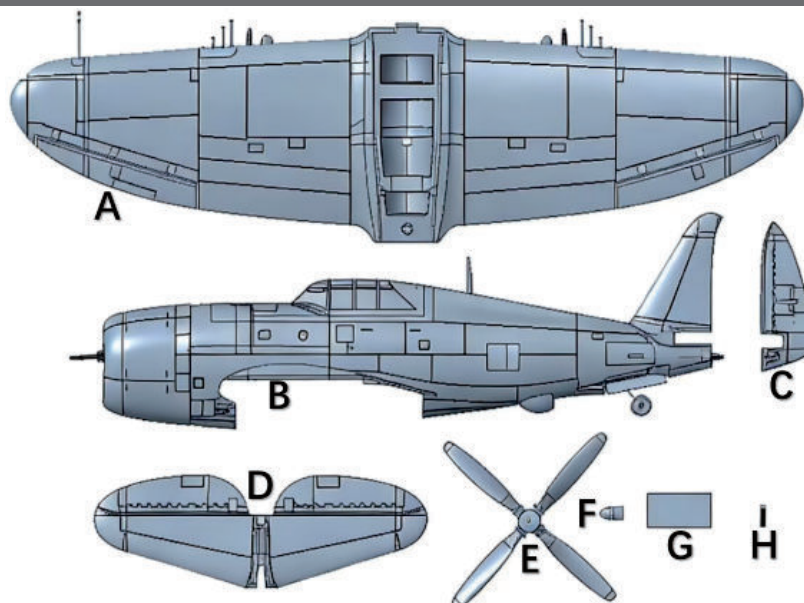
## Aircraft Specifications

★ Material	EPO Foam
★ Wingspan	750 mm / 29.5 in
★ Length	658 mm / 25.9 in
★ Weight	Approximately 470g-490g(including battery)
★ Motor	DST1200 KV Brushless motor
★ ESC	20A Brushless
★ Servo	9g Plastic Gear*4pcs
★ Propeller	8*6inch 4-blade
★ Electric Retracts	2pcs
★ Pilot included	

## Required Equipment

★ Radio System	5CH+
★ Receiver	5CH+
★ Battery	3S 1000mah 20C JST connector
★ Charger	3 cell compatible charger

## Included Parts



A. Main wings  
E. Propeller

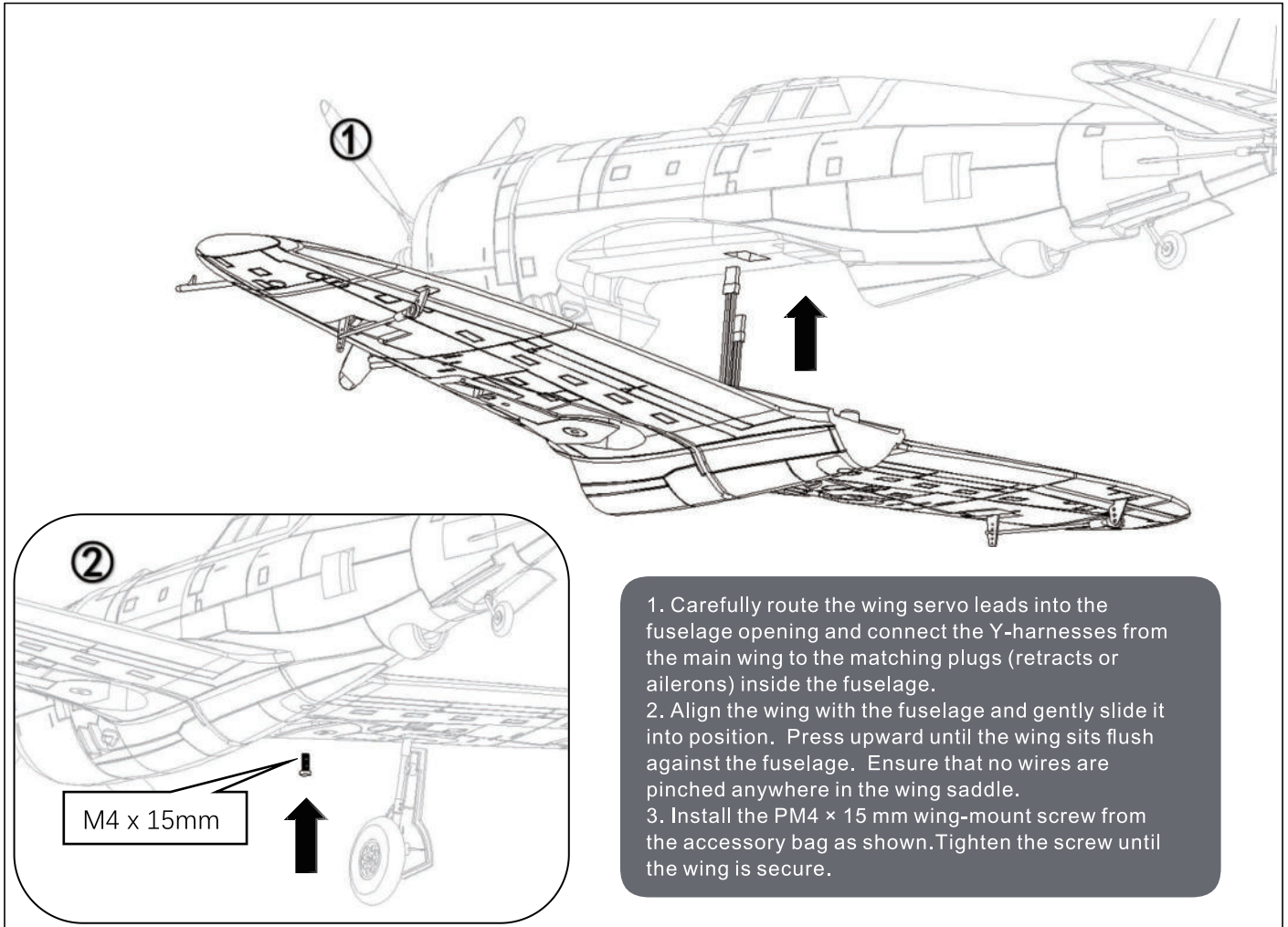
B. Fuselage  
F. Spinner

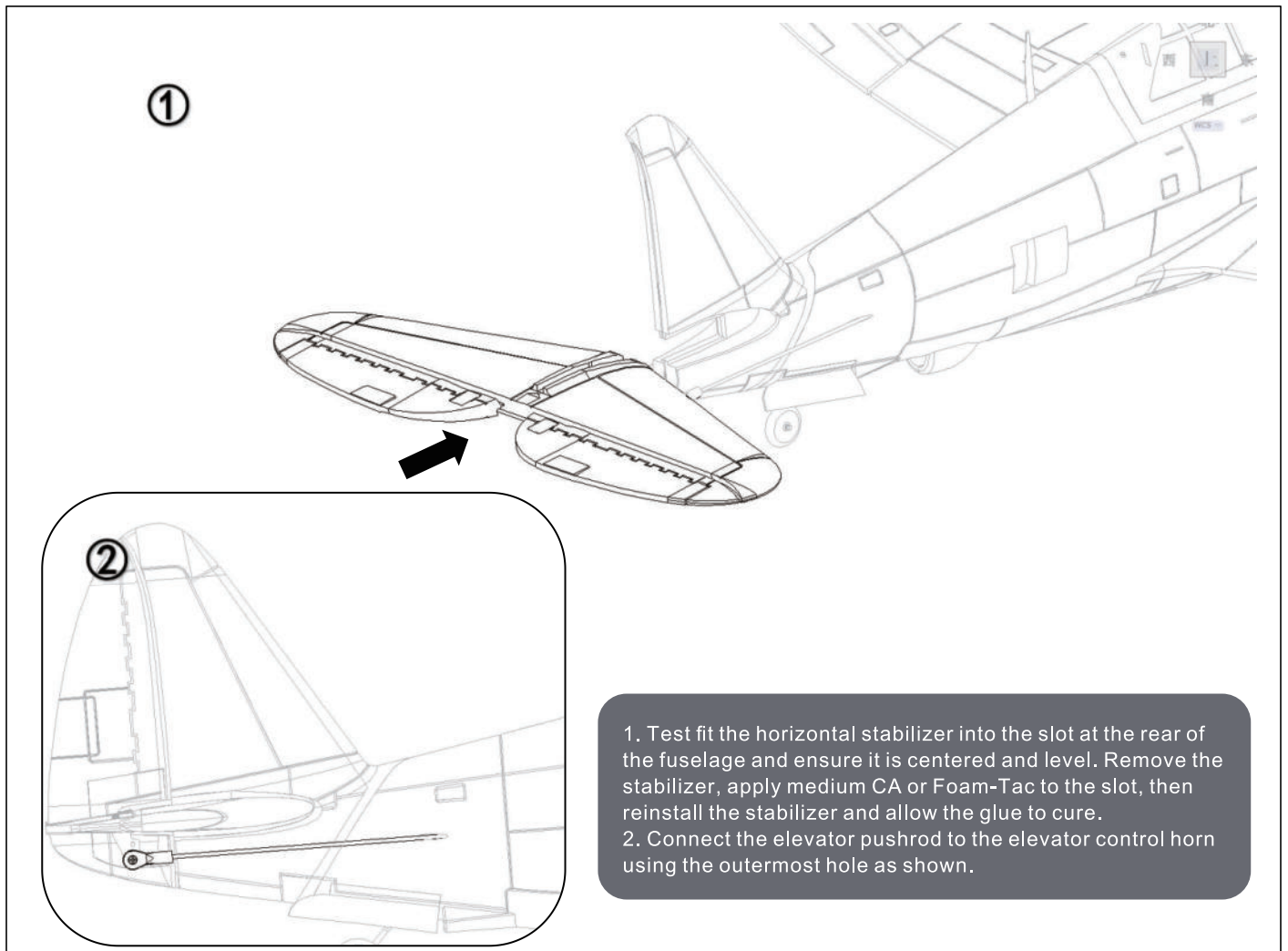
C. Rudder  
G. Velcro Tape

D. Horizontal stabilizer  
H. Wing mount screw

## Assembly Instructions

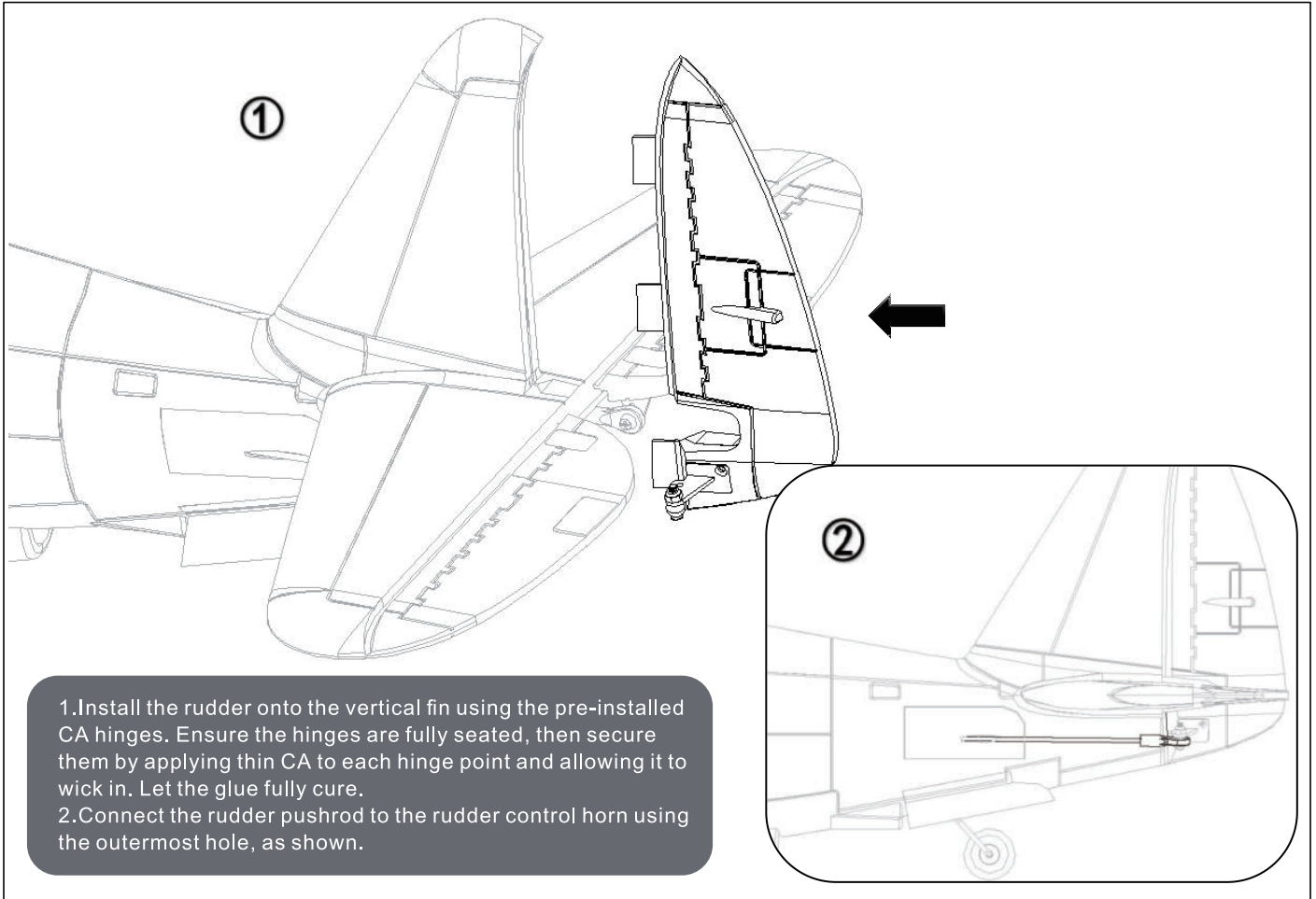
### Main Wing Installation



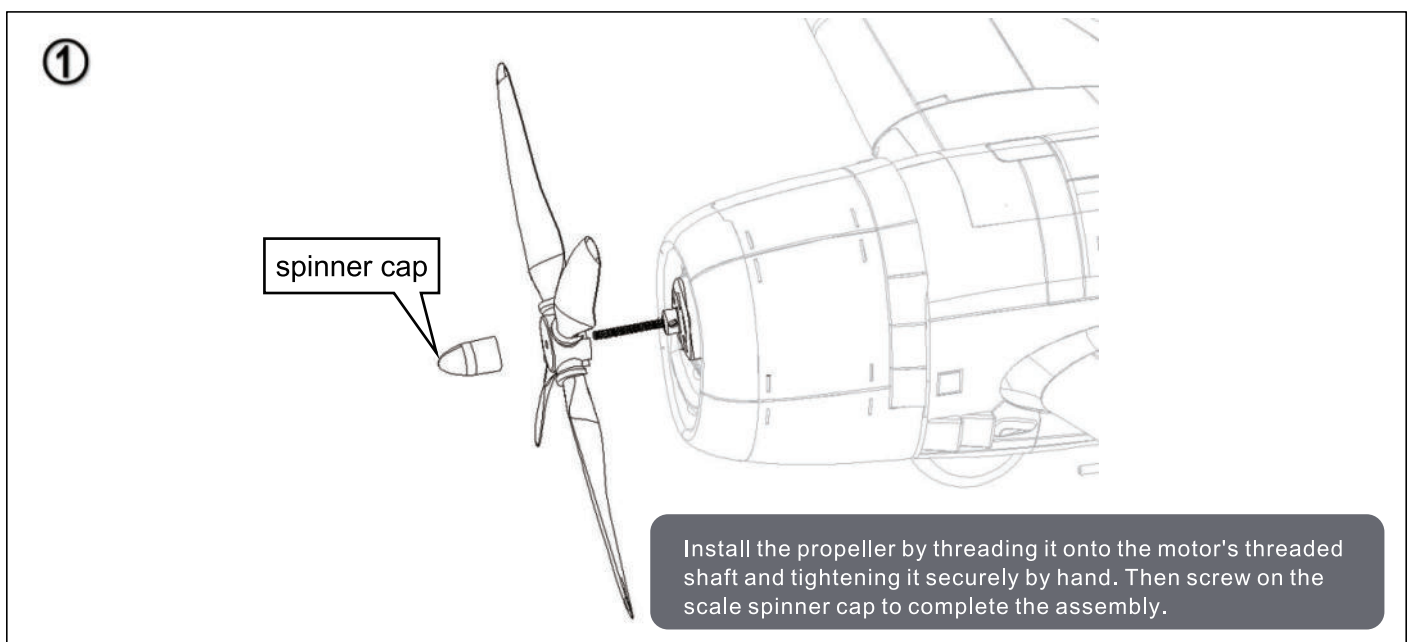


## Assembly Instructions

### Rudder Installation



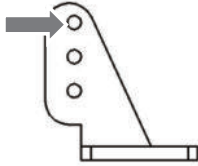
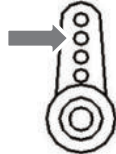
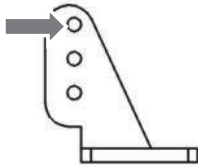
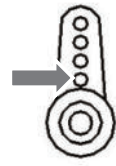
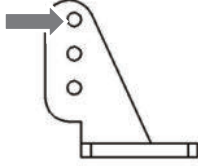
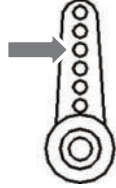
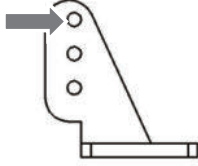
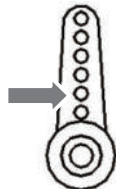
### Propeller Installation



## Assembly Instructions

### Control Horn and Servo Arm Settings

The control horn and servo arm positions shown in the table below reflect the factory-installed settings, which were established through extensive flight testing. After confirming the factory settings, power on the receiver to center all servos. If any control surface is not in a neutral (level) position, fine-tune the pushrods by screwing the ball links in or out as necessary until the surface is properly centered.

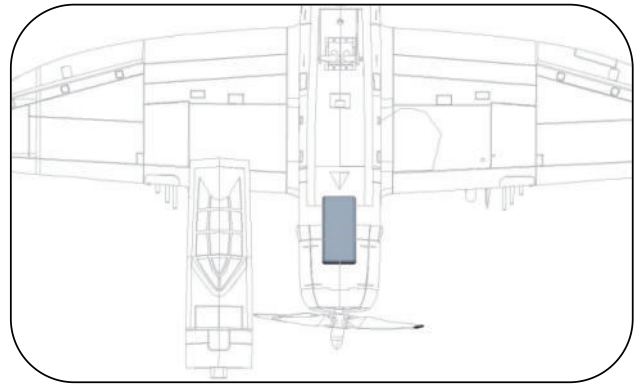
	Control Horns	Servo Arms
Aileron		
Elevator		
Rudder		
Tail Wheel Steering		

## Battery Installation

1. Remove the canopy hatch and open the battery straps in the battery tray.
2. Place the battery into the battery compartment and secure it firmly using the straps.
3. Ensure the throttle is set to idle. Power on the transmitter first, then connect the aircraft battery to the ESC.
4. Because battery weights vary between manufacturers, you may need to adjust the position of the battery to achieve the recommended center of gravity (CG). Slide the battery forward or backward until the CG is correctly set.

### Safety Note:

Always disconnect the battery immediately after flight and never leave a connected battery unattended.



## ESC Throttle Calibration

Turn on the transmitter and move the throttle stick to the top position.



Connect a battery to the ESC; the motor will sound "♪ 123" to indicate the ESC is normally powered on.

Then the motor will beep two short beeps to indicate the maximum throttle endpoint is accepted.

Move the throttle stick to the bottom position within 5 seconds after the two short beeps, the minimum throttle position will be accepted 1 second later.



The motor will beep "Number" beeps to indicate the number of LiPo cells you have plugged in.

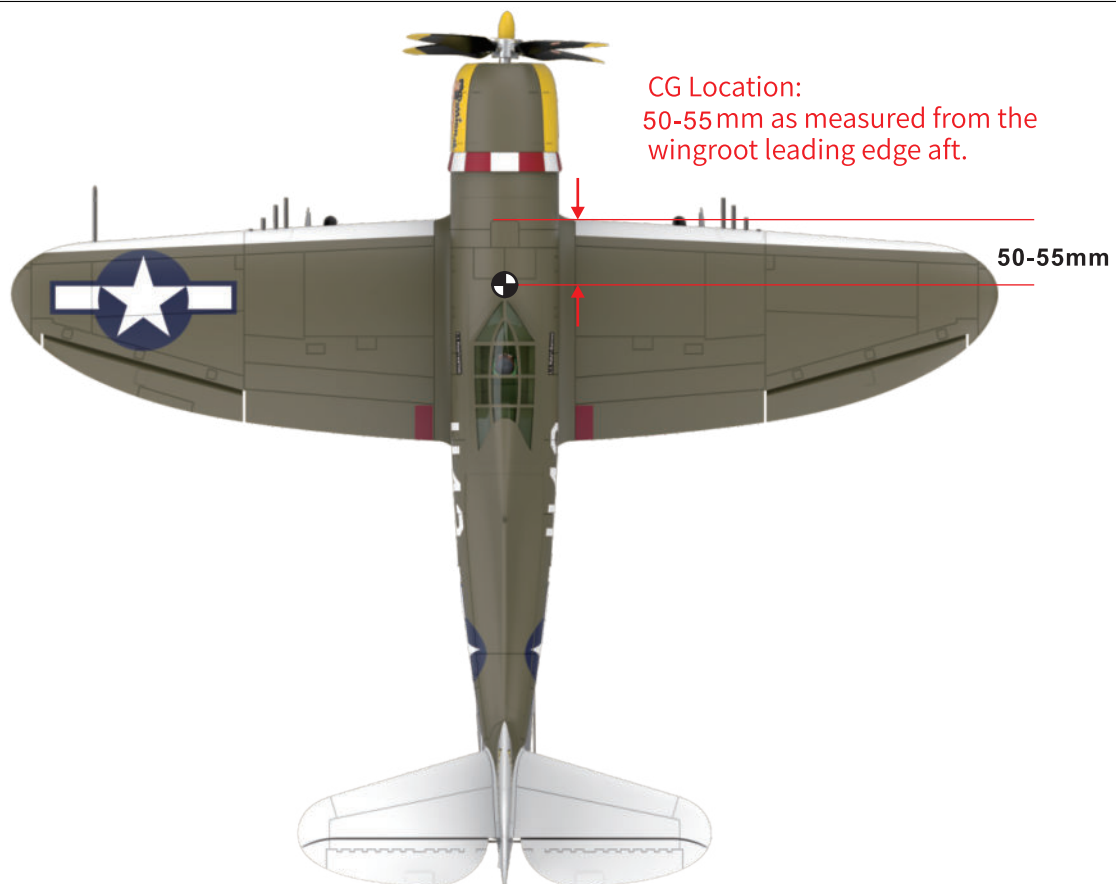
The motor will beep a long beep to indicate the calibration is complete.

## Aircraft Setup

### Center of Gravity Location

Correct CG is essential for safe and stable flight. Refer to the diagram below to locate the recommended CG position. You can set the CG by sliding the battery forward or backward in the battery tray. If the correct CG cannot be achieved through battery placement alone, add small amounts of weight as needed to properly balance the airplane.

**Warning: Flying with an incorrect CG can cause unpredictable handling and may lead to loss of control and loss of the airplane. Always confirm the correct CG before each flight.**



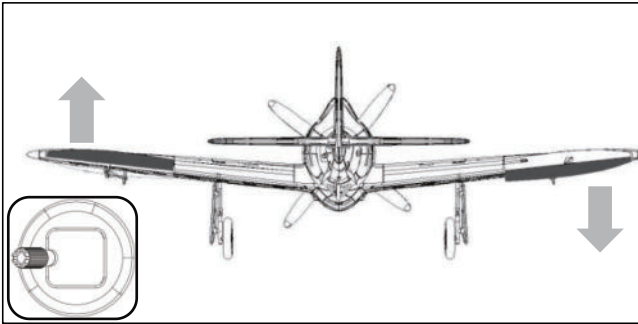
## Aircraft Setup

### Control Direction Testing

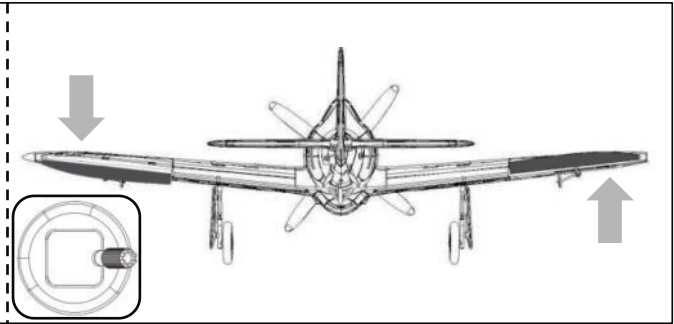
Before flying, connect a fully charged battery and verify that all control surfaces move in the correct direction in response to your transmitter inputs. Refer to the diagram below for proper control directions. If any control surface moves opposite to what is shown, reverse that channel in your transmitter settings.

**Warning: Always remove the propeller before performing control checks. This prevents accidental motor activation, which could cause serious injury.**

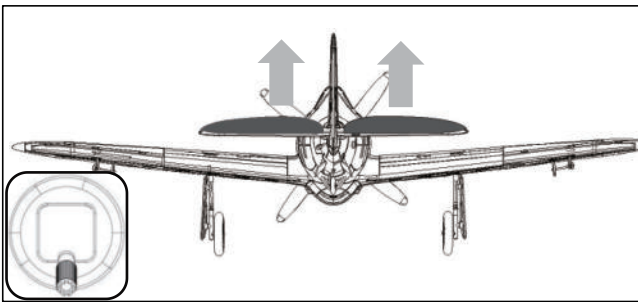
Push the Aileron joystick left



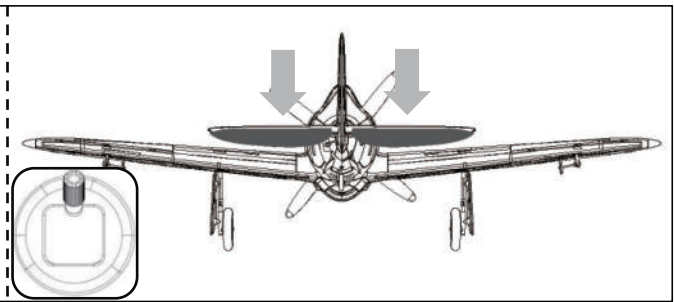
Push the Aileron joystick right



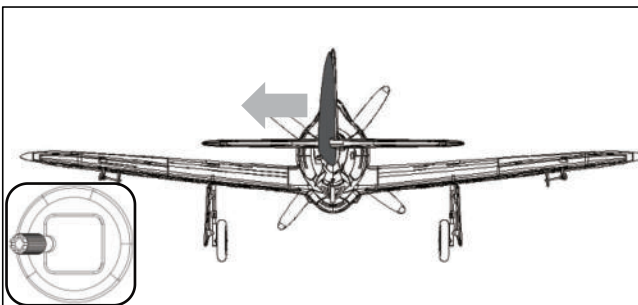
Pull the Elevator joystick downward



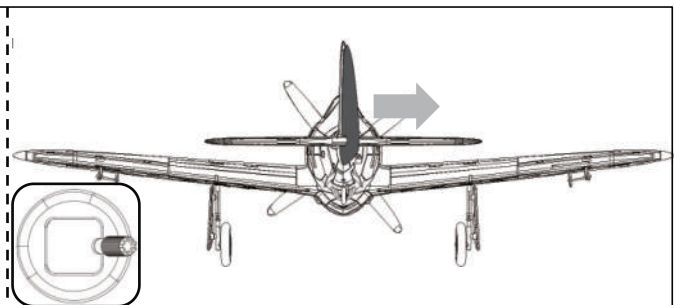
Push the Elevator joystick upward



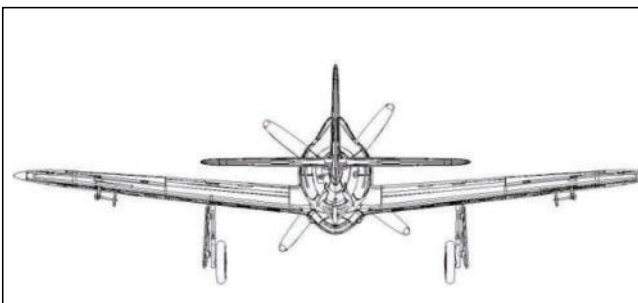
Push the Rudder joystick left



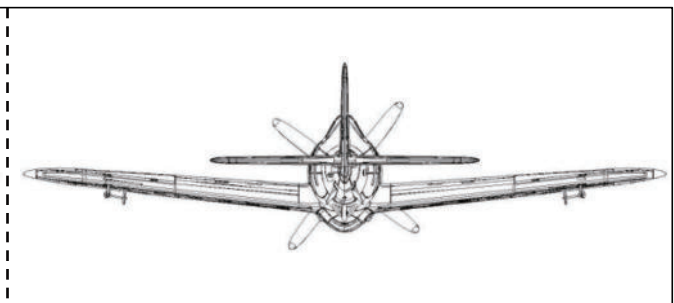
Push the Rudder joystick right



The electric Retract landing gear is extended



The electric Retract landing gear is retracted



## Aircraft Setup

### Control Throws and Dual Rates

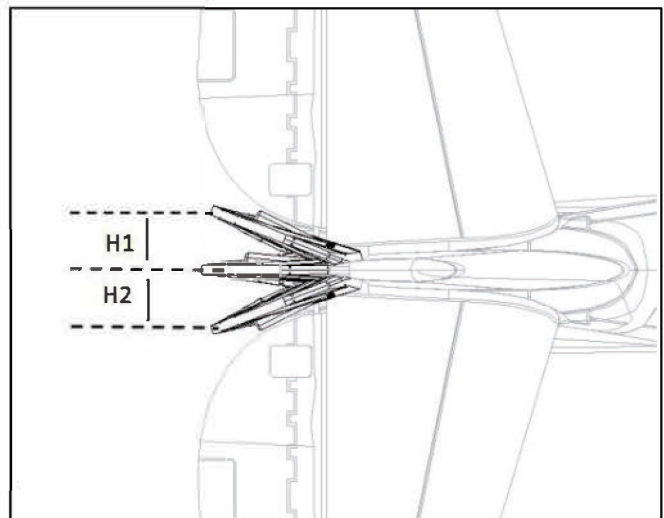
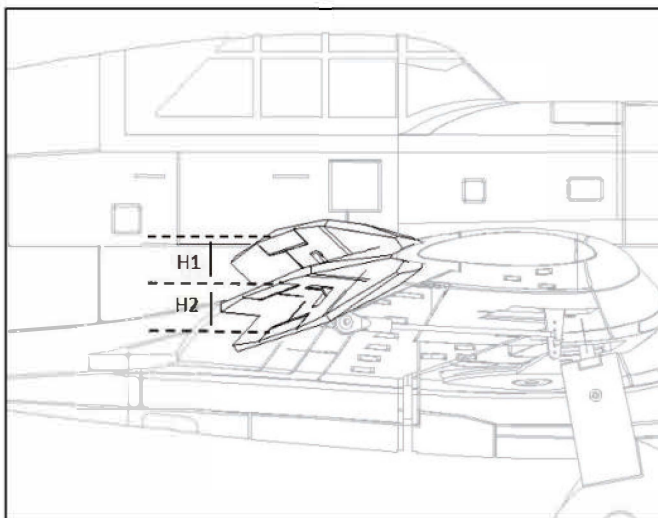
The recommended dual rates and control throws shown below are based on extensive flight testing and provide the best balance of control and stability for this model. Low rates reduce control sensitivity, while high rates provide more authority. We recommend performing your first flight using the high rate settings. After becoming familiar with the aircraft's handling, you may adjust the rates to achieve your preferred control response.

**Warning: Excessive control throw can make the model overly sensitive or even uncontrollable. Always set rates and throws according to the recommended values for your initial flights.**

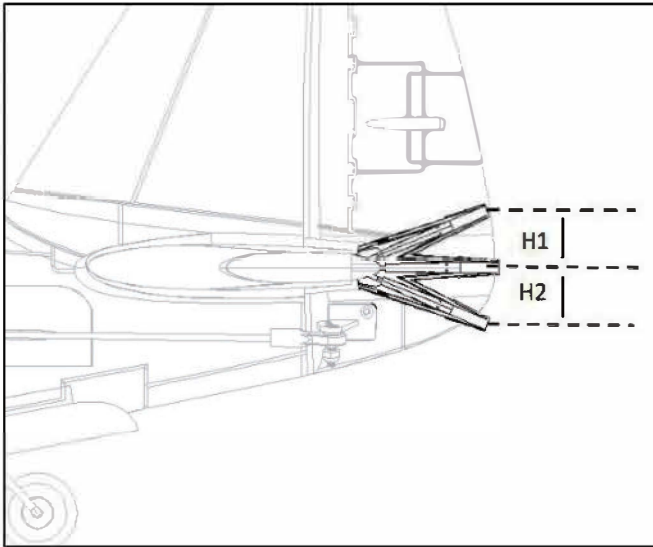
High Rate			Low Rate	
	Dual Rates	Exponential	Dual Rates	Exponential
Aileron	▲=7mm ▼=7mm	25% expo	▲=5mm ▼=5mm	15% expo
Elevator	▲=6mm ▼=6mm	30% expo	▲=4mm ▼=4mm	20% expo
Rudder	◀=15mm ▶=15mm	no expo	◀=10mm ▶=10mm	no expo

Aileron Control Throw (measured at widest point)

Rudder Control Throw (measured at widest point)



## Elevator Control Throw (measured at widest point)



## Operational Safety Guidelines

1. This is a high-performance scale model intended for experienced pilots. This type of aircraft requires smooth and deliberate control inputs; cautious handling will greatly reduce the chance of an accident.
2. If you have access to an RC flight simulator, we strongly recommend practicing on it before flying this model. Simulator training greatly improves real-world flying skills.
3. Maintain a safe altitude (at least 50 meters) and avoid full-throttle flight until the model is properly trimmed and you are familiar with its handling.
4. Always maintain sufficient altitude during aerobatic maneuvers. Hard, tight turns place additional load on the airframe and can cause an unexpected stall, which may result in loss of the aircraft.
5. When taking off or landing, always point the aircraft into the wind.
6. Never fly the aircraft overhead or behind you. Always keep it in front of you at a safe distance and within your line of sight.

## ESC Setup & Safety Notes

1. Do not change the ESC settings. The included ESC is already programmed with the correct parameters for this motor and aircraft.
2. Before connecting the flight battery, ensure the throttle stick and throttle trim on your transmitter are both at their lowest positions. If you accidentally plug in the battery with the throttle above idle, immediately disconnect the battery, lower the throttle stick and trim to the minimum position, and then reconnect the battery.
3. The ESC is installed in a location designed for proper cooling. Do not reposition the ESC, as this may reduce airflow and cause overheating.
4. Ensure the ESC-to-motor wires are connected in the correct order. If the motor spins in reverse, disconnect the battery and swap any two of the three motor wires to correct the rotation.

<b>Problem</b>	<b>Possible Cause</b>	<b>Solution</b>
Aircraft will not respond to the throttle but responds to other controls.	-ESC is not armed. -ESC hasn't been calibrated to the radio	-Lower throttle stick and throttle trim to lowest settings. -Perform ESC/Radio calibration procedure
Extra propeller noise or extra vibration.	-Damaged spinner, propeller motor or motor mount. -Loose propeller and spinner parts -Propeller installed backwards.	-Replace damaged parts. -Tighten parts for propeller adapter, propeller and spinner. -Remove and install propeller correctly.
Reduced flight time or aircraft underpowered.	-Flight battery charge is low. -Flight battery damaged.	-Completely recharge flight battery. -Replace flight battery and follow flight battery instructions.
Control surface does not move, or is slow to respond to control inputs.	-Control surface, control horn, linkage or servo damage. -Wire damaged or connections loose.	-Replace or repair damaged parts and adjust controls. -Do a check of connections for loose wiring
Controls reversed.	Channels are reversed in the transmitter.	Do the control direction test and adjust controls for aircraft and transmitter.
-Motor loses power -Motor power pulses then motor loses power.	-Damage to motor, or battery. -Loss of power to aircraft. -ESC uses default soft LowVoltage Cutoff(LvC).	-Do a check of batteries, transmitter, receiver, ESC, motor and wiring for damage(replace as needed). -Land aircraft immediately and recharge flight battery.
-Receiver not connecting to transmitter.	Power loss to receiver.	-Check connection from ESC to receiver. -Check servos for damage. -Check linkages for binding.

## Pre-Flight Checklist

Perform a thorough ground inspection before each flight to help ensure safe operation.

1. Verify that all screws, control horns, servo arms, and linkages are secure. Confirm that the wing attachment points and fasteners are properly secured in place.
2. Ensure all batteries (aircraft and transmitter) are fully charged and in good condition.
3. Install the battery and confirm the aircraft's CG is set to the recommended position.
4. Arm the model by plugging in the battery, then gently advance the throttle to confirm the motor and propeller rotate in the correct direction. Always point the aircraft away from you during this test and keep hands, tools, and loose objects well clear of the propeller.
5. Only fly after all pre-flight checks are complete. For new pilots, we strongly recommend having an experienced RC pilot assist with the maiden flight to help avoid accidents due to improper setup or

## Flight Duration & Battery Management

Flight time will vary depending on battery capacity, aircraft weight, flying style, and weather conditions. For your first flights, we recommend setting a 4-minute timer on your transmitter to establish a safe baseline.

Use your transmitter's flight timer or telemetry features to track flight duration. When the timer expires or your lowvoltage alarm sounds, land the aircraft promptly and check the remaining battery capacity. Avoid flying far downwind when the battery is nearing depletion, as the aircraft may not have sufficient power to return safely.

**Note: Repeatedly flying the battery to very low voltage can shorten battery life or cause damage. Always leave adequate reserve capacity.**

## Spare Parts List

SKY1073-100	Skynetic P-47 Thunderbolt "Passionate Patsy" Fuselage	SKY1073-111	Skynetic P-47 Thunderbolt "Passionate Patsy" Decal sheet
SKY1073-101	Skynetic P-47 Thunderbolt "Passionate Patsy" Main Wings	SKY1073-112	Skynetic P-47 Thunderbolt "Passionate Patsy" Pushrod Set
SKY1073-102	Skynetic P-47 Thunderbolt "Passionate Patsy" Horizontal Stab	SKY1073-113	Skynetic P-47 Thunderbolt "Passionate Patsy" Screw Set
SKY1073-103	Skynetic P-47 Thunderbolt "Passionate Patsy" Rudder	SKY1072-106	Skynetic 17mm (0.67") WWII Pilot Figure - Gray
SKY1073-104	Skynetic P-47 Thunderbolt "Passionate Patsy" Canopy Hatch W/pilot	SKY1072-116	Skynetic Micro Main Retract for 2.3mm Diameter Shafts (1pc)
SKY1073-105	Skynetic P-47 Thunderbolt "Passionate Patsy" Cowl	SKY1072-117	Skynetic Micro Main Retracts for 2.3mm Diameter Shafts, Left and Right (2 pcs)
SKY1073-106	Skynetic P-47 Thunderbolt "Passionate Patsy" Wheels Set	SKY5015-012	Skynetic 9g Servo with 150mm (5.9") Lead
SKY1073-107	Skynetic P-47 Thunderbolt Spinner	SKY1067-111	Skynetic 9g Servo with 300mm Lead
SKY1073-108	Skynetic P-47 Thunderbolt "Passionate Patsy" Prop Hub	SKY6003-015	Skynetic 750mm P-47 Thunderbolt "Passionate Patsy" 20A Brushless ESC, JST plug
SKY1073-109	Skynetic P-47 Thunderbolt "Passionate Patsy" Propeller(4 blades)	SKY6000-025	Skynetic 750mm P-47 Thunderbolt "Passionate Patsy" DST-1200 Brushless Motor
SKY1073-110	Skynetic P-47 Thunderbolt "Passionate Patsy" Main Landing Gear		

# ***P-47 Thunderbolt "Passionate Patsy" PNP***

## ***750mm Wingspan RC Warbird with Retracts***



**01/2026**

**AGE 14+**    

*Made in China*