



# USER MANUAL



# SUPER KINETIC 815

PLEASE READ THIS MANUAL CAREFULLY AND FOLLOW THE INSTRUCTION





**PLEASE READ THIS MANUAL CAREFULLY AND FOLLOW THE INSTRUCTION**

Thank you for choosing this classic model airplane. This model is for beginner, intermediate and experienced hobby enthusiast. Hope you have a nice time with this wonderful model!!! Happy flying !

*Disclaimer: Do not fly this Airplane at full-throttle for long periods of time, recommended 20-25 seconds burst!*

**TABLE OF CONTENTS**

<b>SPECIFICATION</b> .....	<b>2</b>
<b>SAFETY INSTRUCTIONS</b> .....	<b>2</b>
<b>ASSEMBLY INSTRUCTIONS</b> .....	<b>3</b>
<b>WHAT'S IN THE BOX</b> .....	<b>3</b>
<b>CENTER OF GRAVITY (CG)</b> .....	<b>5</b>
<b>CHARGING OF LI-PO BATTERY</b> .....	<b>6</b>
<b>CONTROL DIRECTION TEST</b> .....	<b>7</b>
<b>TROUBLE SHOOTING</b> .....	<b>8</b>
<b>ACCESSORIES</b> .....	<b>9</b>

## SPECIFICATION

### Technical Parameter

Wingspan:815mm(32.09 inch)

Length:629mm(24.76 inch)

Weight:365g

ESC:20A x1

Servo:5g x4

Radio:4-channel

Motor:Brushless motor x 1(2630, Kv1000)

Battery:Li-po 11.1V 3S $\leq$ 850mah 20C

### Design Features

1. Super stable flight performance;
2. High performance for gliding;
3. Large thrust ratio;
4. EPO makes it super crash resistant and impact
5. High speed and flexible flight performance .
6. Super easy to assemble .

## SAFETY INSTRUCTIONS

1. Do not fly in storms, strong winds, bad weather or lightning
2. NEVER FLY NEAR POWERLINES, overhead wires, roads, railroads or airports
3. Never fly near houses or people! Your Super Kinetic can cause damage to property or injury!
4. Do not fly where other models on the same frequency are flying, until you do a preflight check of all your controls

Make sure you do a preflight check- inspect the whole plane and make sure the motor runs smoothly and all your controls work properly. Do this before EACH FLIGHT!

5. Use only genuine Durafly replacement parts
6. Don't try to catch the Super Kinetic during flight- you could be badly injured! Take off from and land on a suitable landing strip.
7. Not recommended for children under 12 years old. Children under 14 should operate the model only with a responsible adult.
8. The Super Kinetic includes small parts (choking hazards) and sharp edges! Assemble and store your plane out of the reach of children.
9. Never install batteries incorrectly- check the polarity (positive and negative) before connecting or installing batteries
10. Keep your Super Kinetic out of direct sunlight (unless you're flying it!) and away from heat sources. Foam can distort when it is overheated.
11. Fly intelligently-don't fly towards yourself or other people, or structures, cars, trees, animals, or anything else on the ground.

## First Flight preparation

- Remove and inspect contents.
- Read this instruction manual thoroughly.
- Install the flight battery in the aircraft (Once it has been fully charged).
- Ensure pushrods move freely.
- Perform the Control Direction Test with the transmitter
- Adjust flight controls and transmitter
- Adjust battery for center of gravity(CG)
- Perform a radio system Range Check
- Find a safe and open area
- Plan flight for flying field conditions

## Maintenance After Flying

- Disconnect flight battery from ESC (Required for Safety)
- Turn off transmitter
- Remove flight battery from aircraft
- Recharge flight battery
- Repair or replace all damaged parts
- Store flight battery apart from aircraft and monitor the battery charge
- Make note of flight conditions and flight plan results, planning for future flights

## ASSEMBLY INSTRUCTIONS

This manual provides simple step by step assembly instructions. However, if this is your first plane, we recommend that you ask a fellow flier for some help putting your Super Kinetic together. They will probably jump at the chance just to get a look at it!

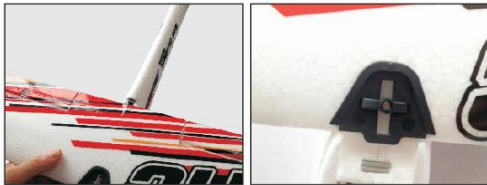
## WHAT'S IN THE BOX



**ASSEMBLY INSTRUCTIONS**



1. Insert the horizontal stab into the fuselage's plastic stab holder device. Make sure that when connecting both stabs together that the plastic locking device is securely clipped.



2. Insert the trailing edge of the wing into the plastic holder. Then firmly push down on the wing and rotate the locking mechanism to lock the wing onto the fuselage. Please make sure that the servo wires are not pinched between the wing and fuselage when attaching.



3. Plug the wires into the receiver, please refer to your radio manual as to see the appropriate channels. Please make sure to situate all wires away from the motor area.



4. Securely fasten your battery on the velcro location that is already included inside your plane. Connect the JST connector and secure the battery cover.



5. Assembly finished.

**CENTER OF GRAVITY (CG)**





### CHARGING OF LI-PO BATTERY

WARNING- before plugging in the battery, turn on the transmitter and make sure the throttle and the throttle trim are set to OFF (all the way down).  
KEEP CLEAR OF THE PROPELLER! (Remember that this is very sharp propeller!)

Open the battery hatch cover at the top of the fuselage and install the battery in the forward compartment, which is angled down towards the nose. Install the battery first, and then plug it in.

Make sure that no wires are out of place, and close the battery hatch.

### Safety Instruction of li-poly battery

1. Do not disassemble or reconstruct the battery.
2. Do not short-circuit the battery.
3. Do not use or leave the battery nearby the fire, stove or heated place (more than 80°C)
4. Do not immerse the battery in water or sea water, do not get it wet.
5. Do not charge the battery in direct sunlight.
6. Do not impact or toss the battery.
7. Do not use the battery with conspicuous damage or deformation.
8. Do not attempt direct soldering on the battery.
9. Do not reverse charge or over discharge the battery.
10. Do not reverse charge or reverse connect.
11. Do not connect the battery to the ordinary charger socket or car cigarette jack.
12. Do not use the battery for unspecified equipment.
13. Do not touch the leaking battery directly, please wash your skin or clothes with water.
14. Do not mix the Li-Poly battery with other dis-charged battery in using.
15. Do not continue charging the battery over the prescribed time.
16. Do not use or keep the battery under the direct sunlight.
17. Do not use the battery nearby the place where generates static electricity.
18. Do not use the battery when the environmental temperature is under 0°C or over 45°C.
19. If you find the battery leaking, smelling or abnormal, stop using it and return it to the seller.
20. Keep the battery away from children.
21. Use the specified charger and observe charging requirement.
22. When used by minors, parents should show them to the correct instruction.

### Cautions

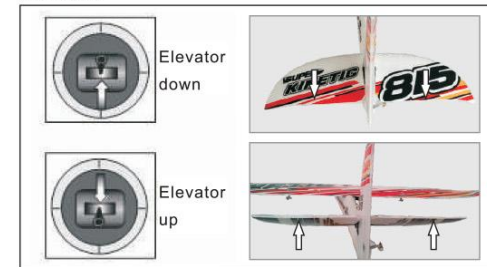
Do not over charge or over dis-charge battery.

### CONTROL DIRECTION TEST

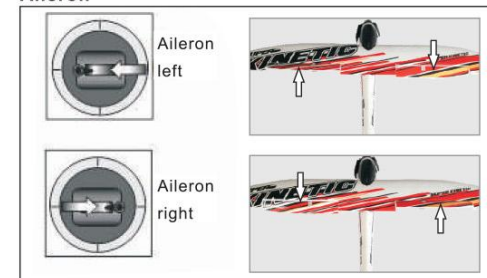
You should bind your aircraft and transmitter before doing these tests. Move the controls on the transmitter to make sure aircraft control surfaces are moved correctly.

Note: Make sure tail pushrods move freely and that paint or decals are not adhered to them.

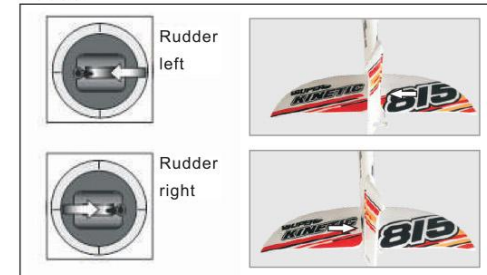
#### Elevator



#### Aileron




#### Rudder



**TROUBLE SHOOTING**

Problem	Cause	Solution
Motor does not run	<ol style="list-style-type: none"> <li>1. Battery is not fully charged.</li> <li>2. The battery of transmitter is not sufficient</li> <li>3. Check the wire connection inside the model</li> </ol>	<ol style="list-style-type: none"> <li>1. Charge the batteries.</li> <li>2. Install a full charged battery</li> <li>3. Contact the local dealer</li> </ol>
No reaction of the control surface	<ol style="list-style-type: none"> <li>1. The servo cable didn't plug properly or inverted plug.</li> <li>2. the servo is damaged</li> </ol>	<ol style="list-style-type: none"> <li>1. Check the connection of the servo cable</li> <li>2. Change another servo.</li> </ol>
Can not fly straight	<ol style="list-style-type: none"> <li>1. The rudder is not in the center position of the airframe</li> <li>2. The main wing is not fixed in the center position of the airframe.</li> </ol>	<ol style="list-style-type: none"> <li>1. Adjust the trim switch on the transmitter</li> <li>2. Re-assembly the main wing</li> </ol>
Can not climb	<ol style="list-style-type: none"> <li>1. The battery is not fully charged.</li> <li>2. Elevator is out of trim.</li> </ol>	<ol style="list-style-type: none"> <li>1. Charge the battery</li> <li>2. Adjust the trim on the Transmitter.</li> </ol>
Limited control range	The batteries are almost flat	Install new batteries

**ACCESSORIES**

		
Fuselage 9310000145-0	Main Wing 9310000146-0	
		
Horizontal Stabilizer 9310000147-0	Flexible propeller 9310000148-0	Propeller blades 9310000149-0
		
Motor Mount 9310000150-0	Canopy 9310000152-0	Control Wire-steel 9310000153-0
		
1000kv Motor 9310000154-0	Decal Set 9310000155-0	Ball Link 310000121