

9Kv2
55m

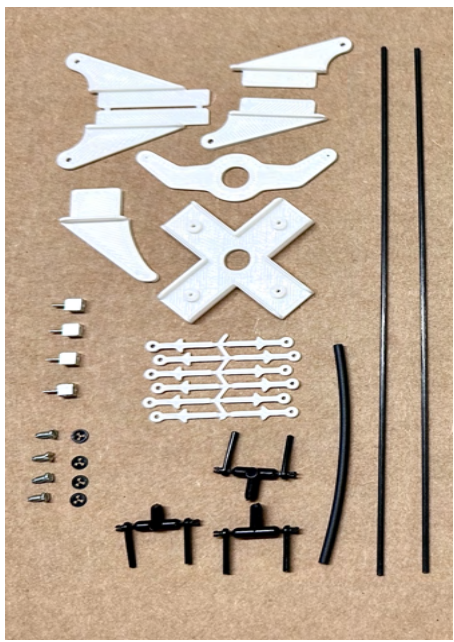


Crack Yak
Edge 540
Extra Slick
Sbach
Cap 10
Yak-55

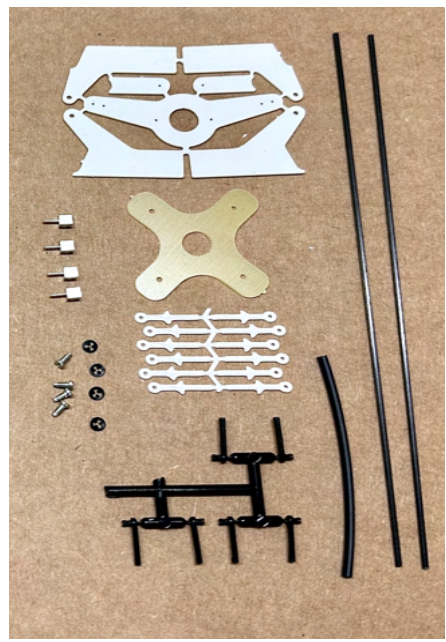


Twisted Hobbys Backyard Series Models Manual

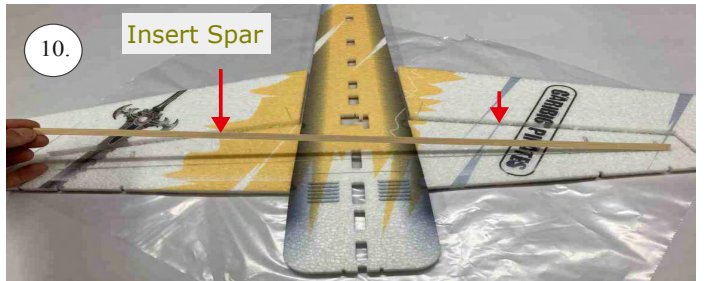
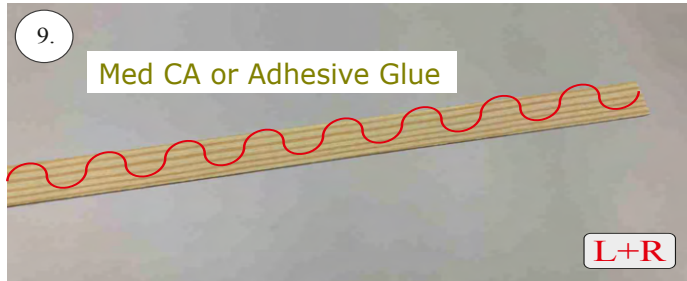
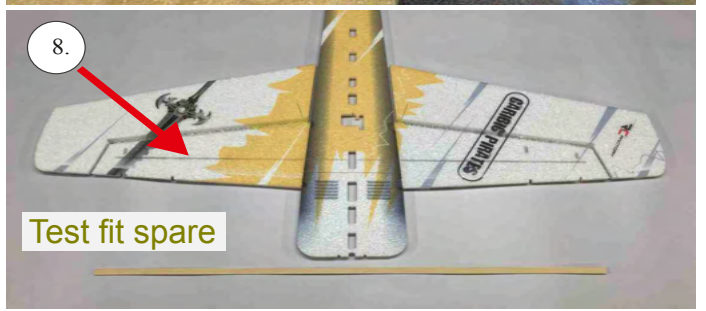
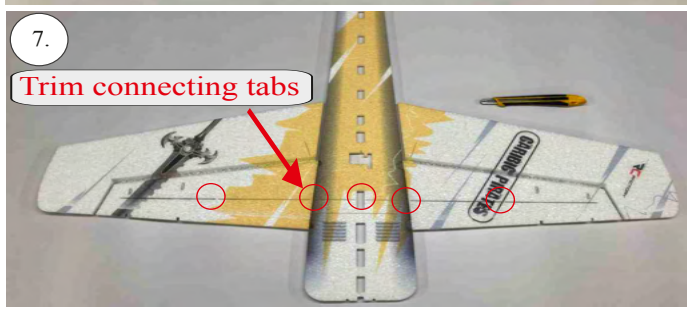
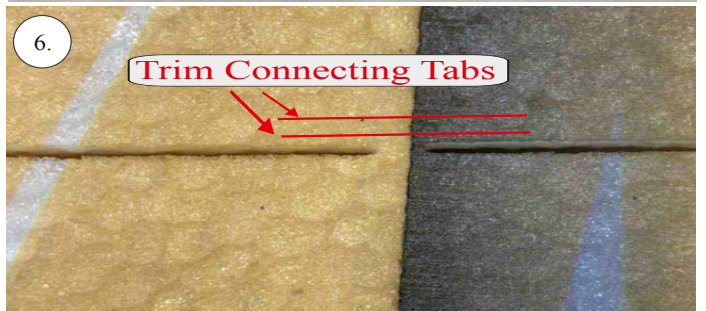
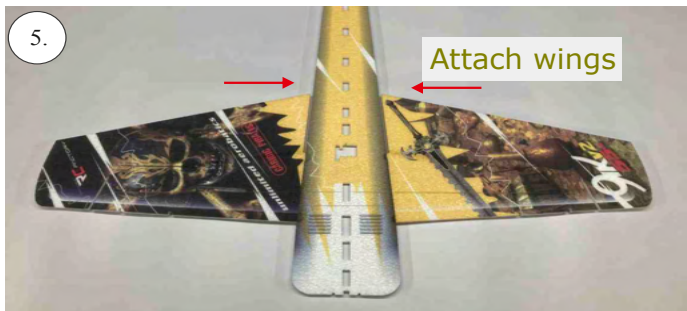
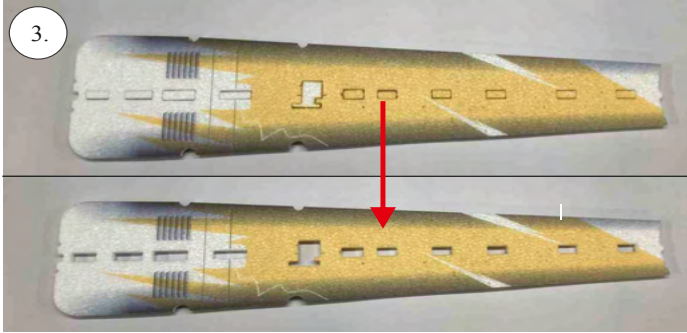
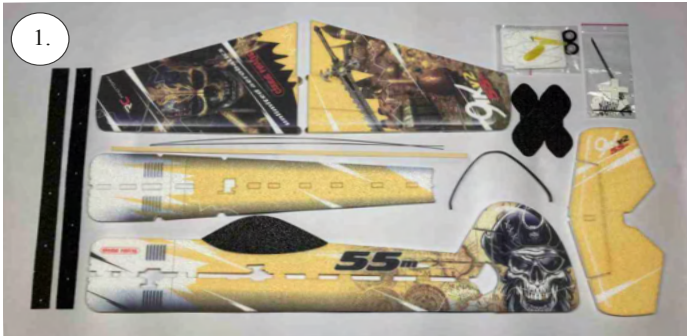


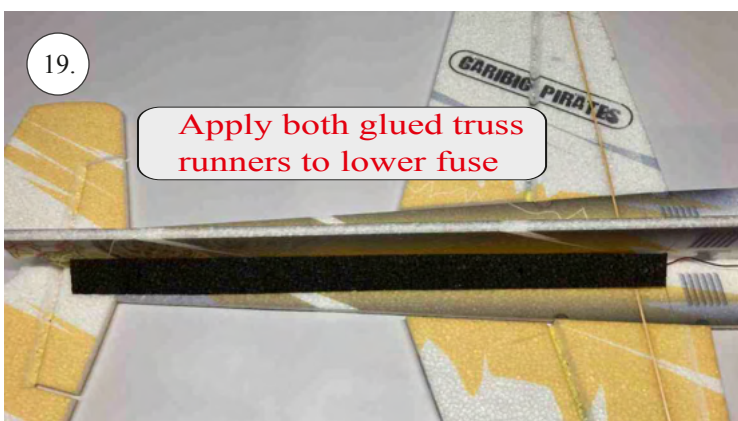
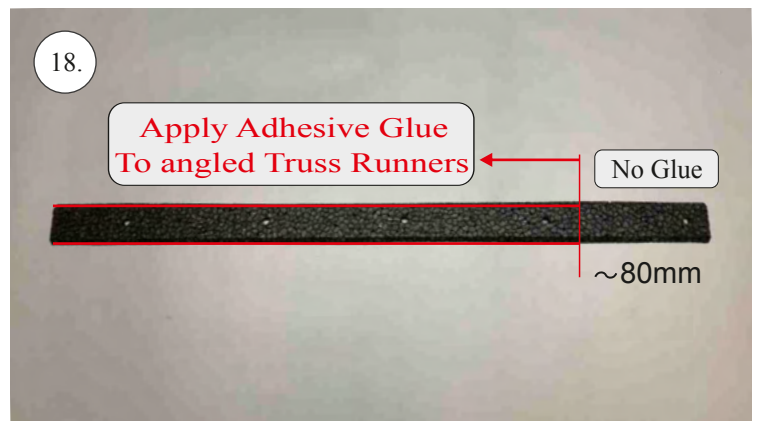
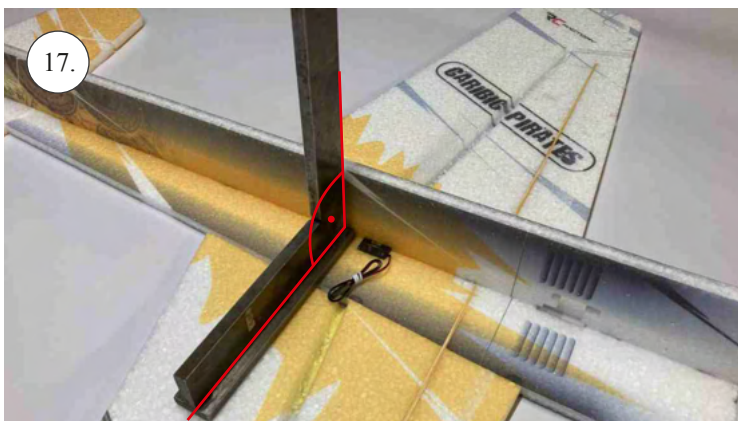
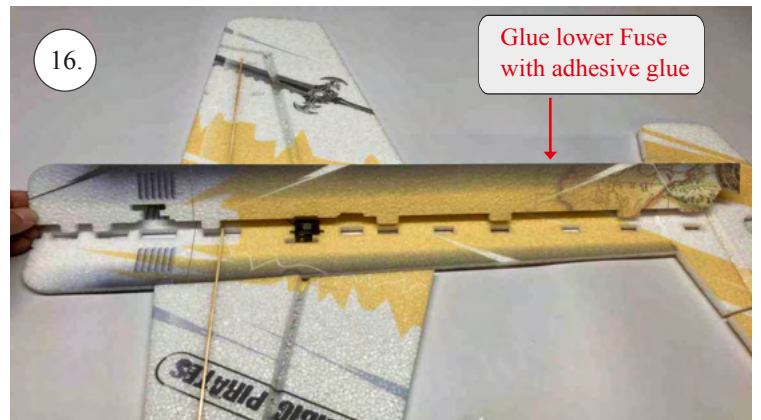
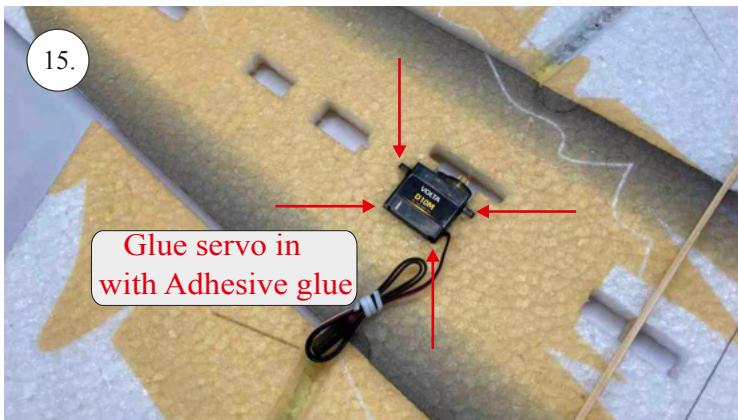
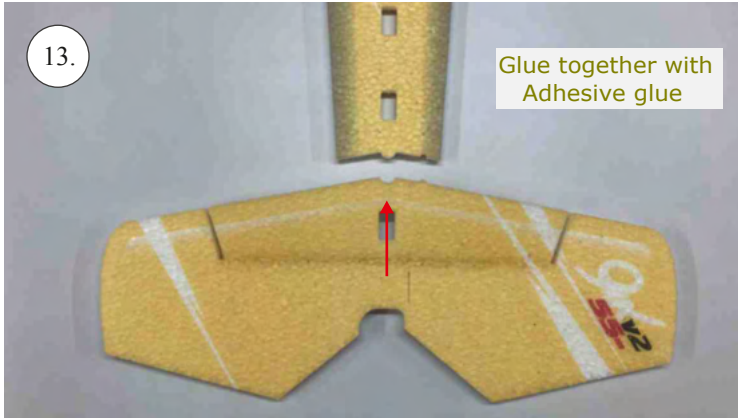
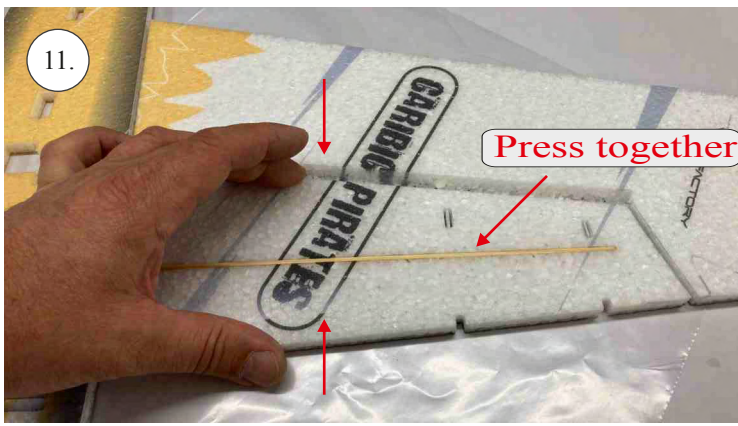


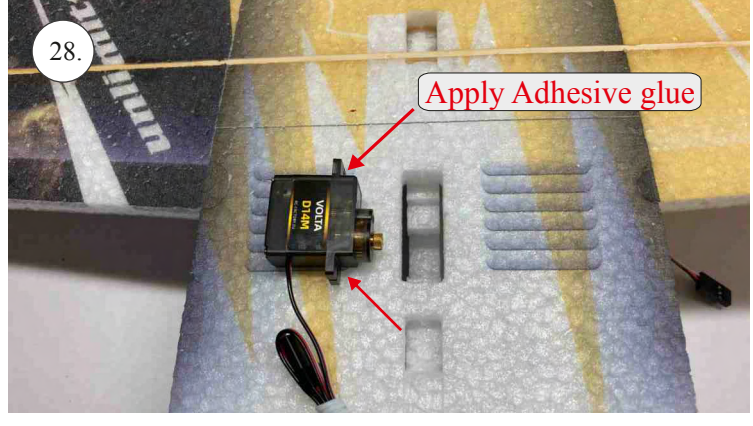
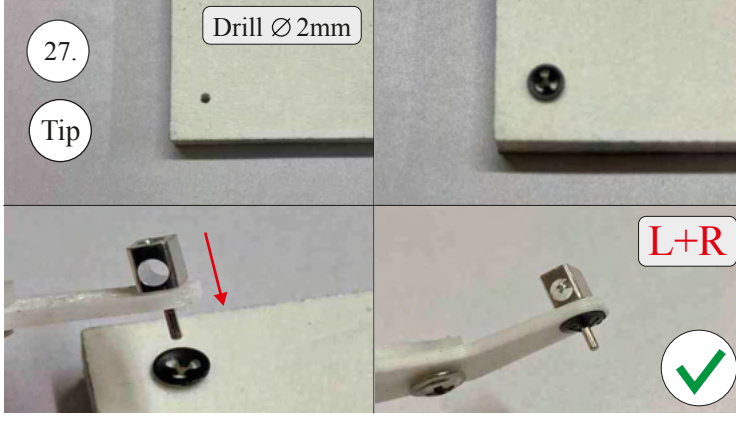
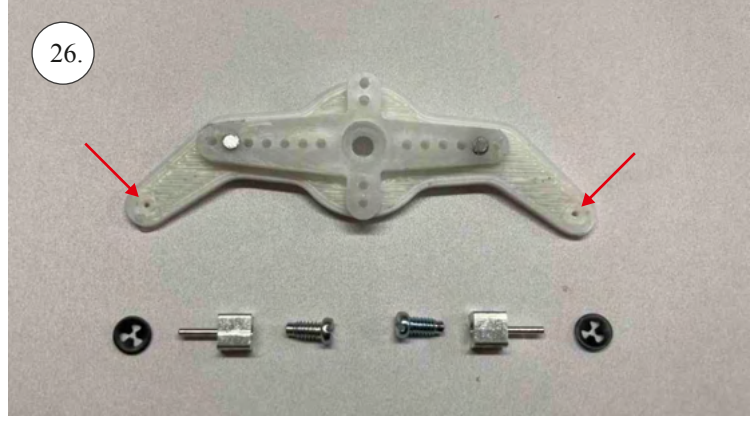
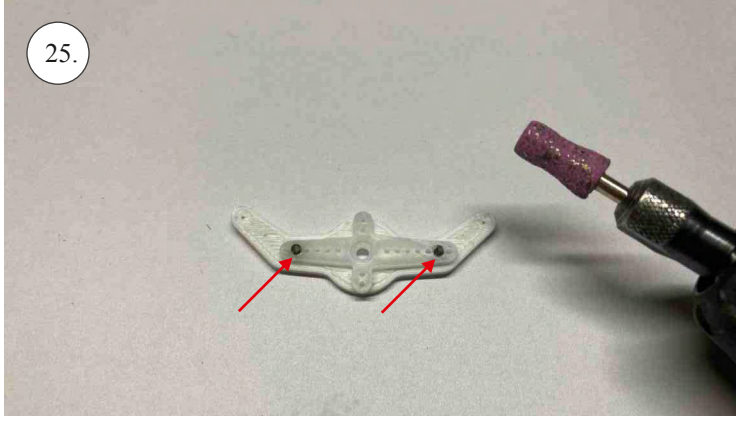
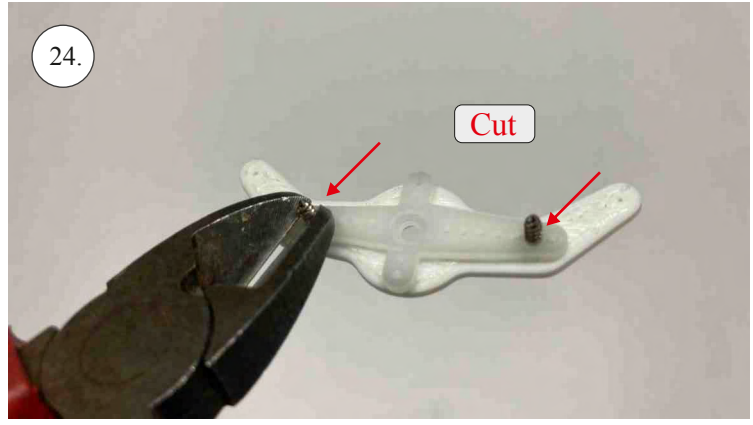
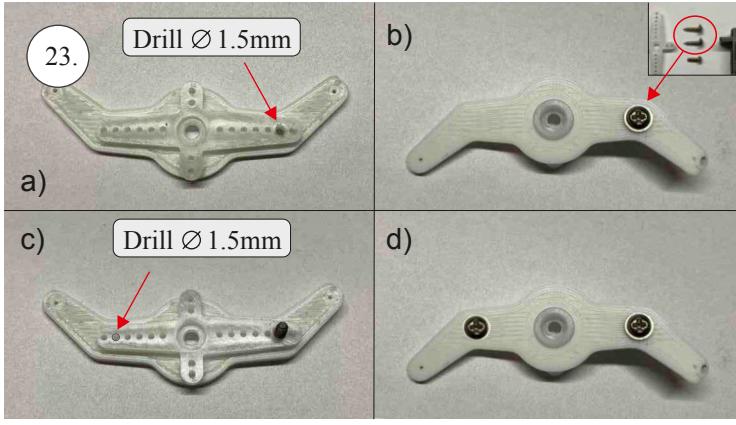
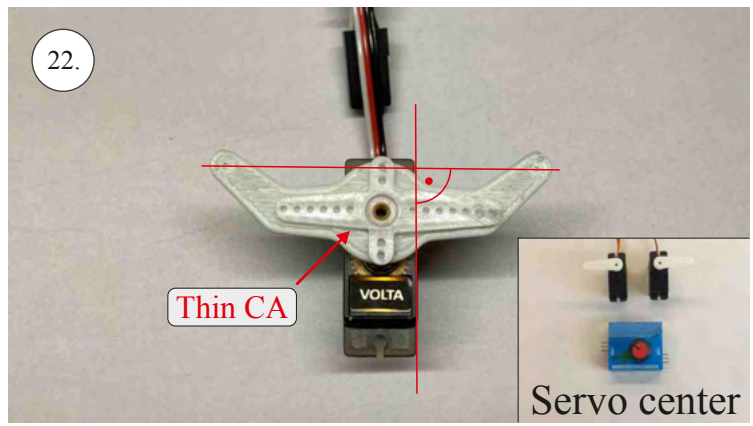
Yak-55 & Cap 10 Hardware

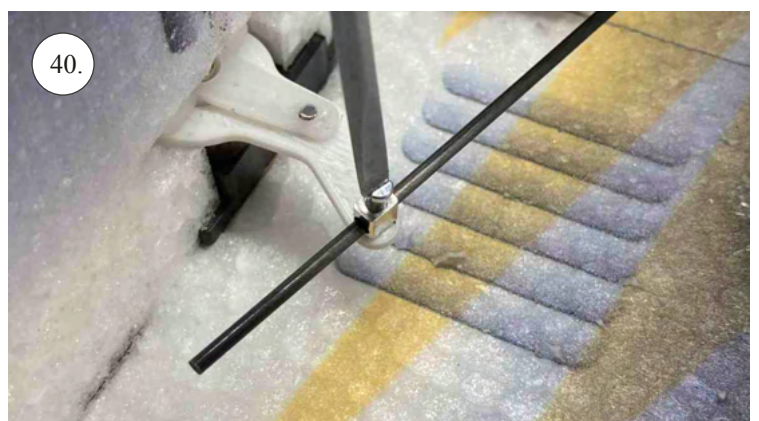
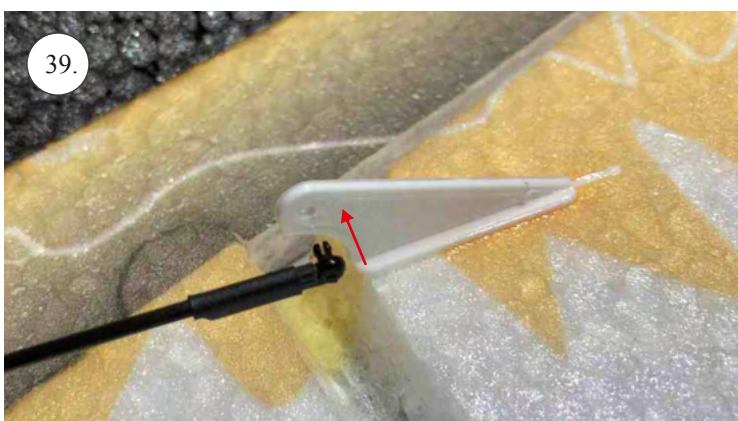
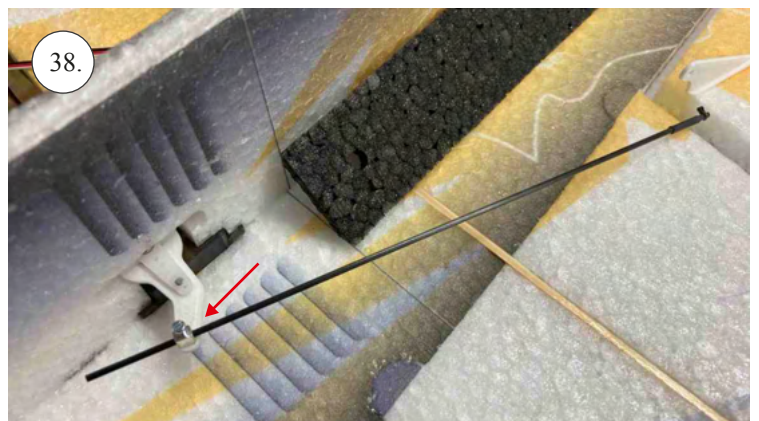
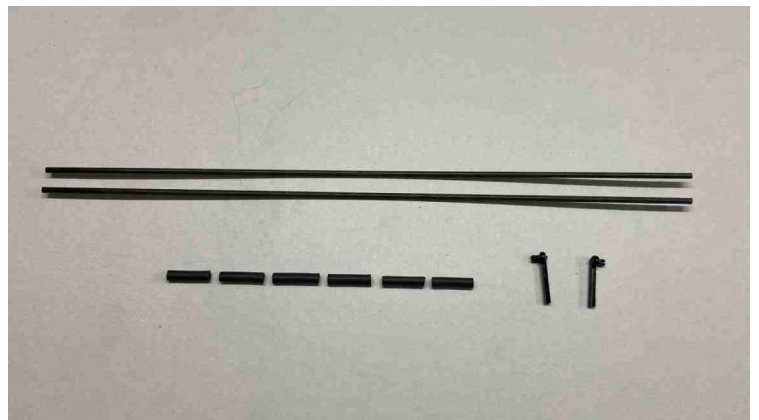
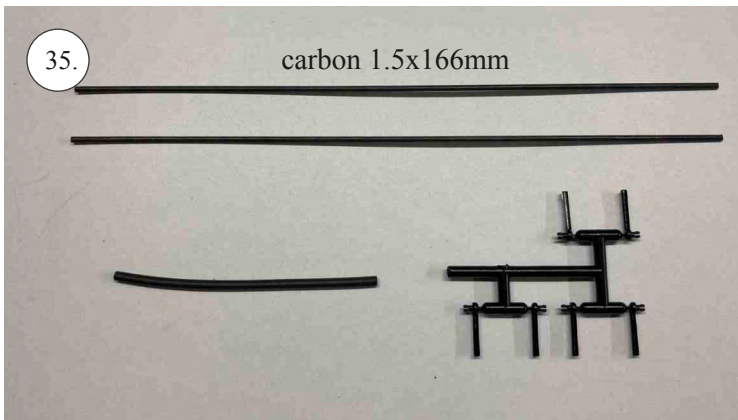
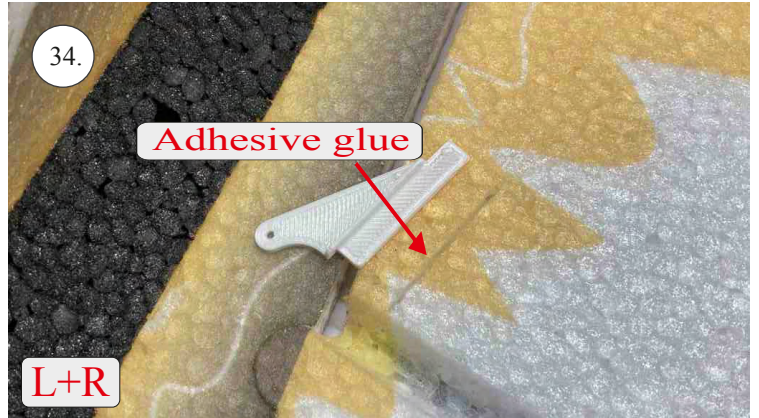
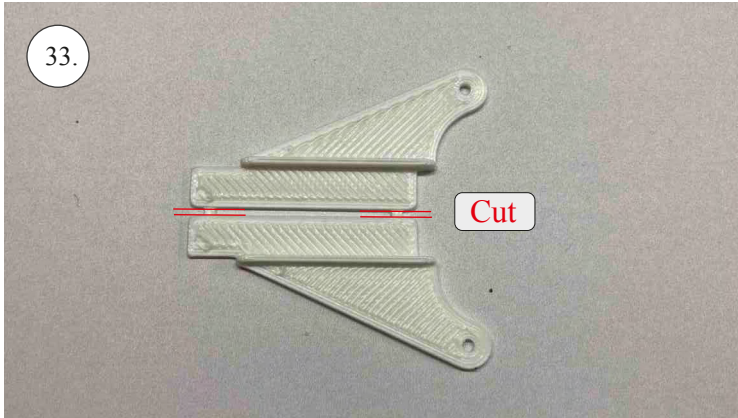
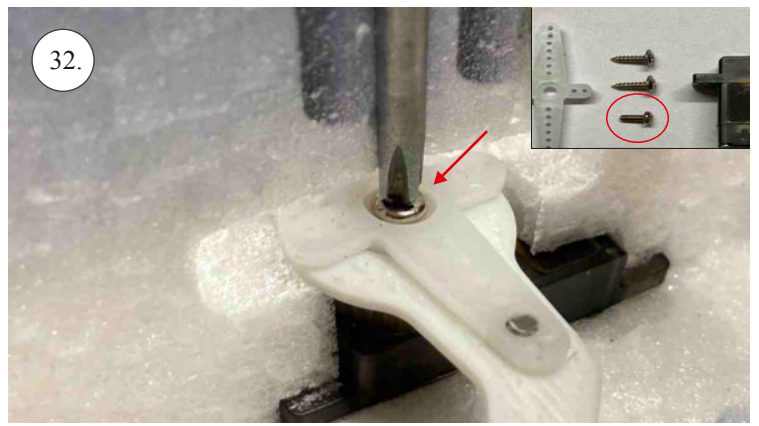
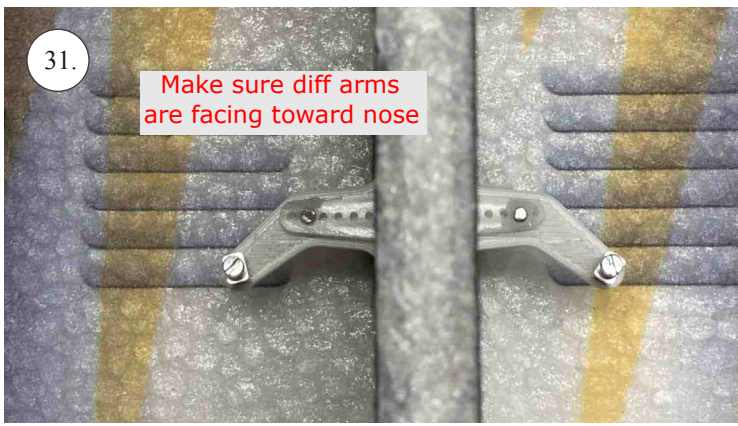


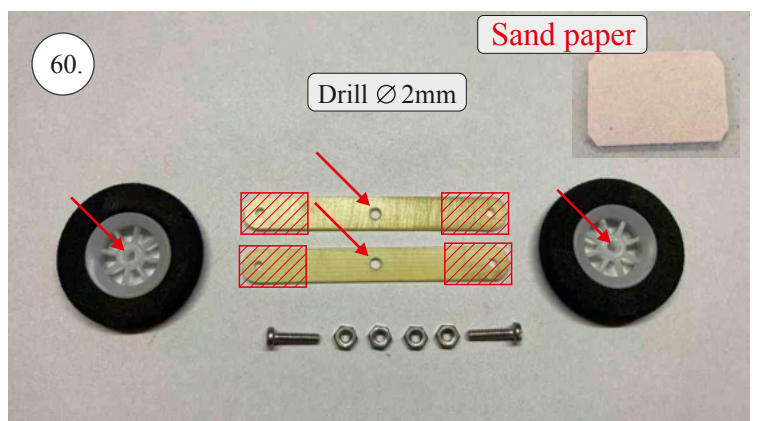
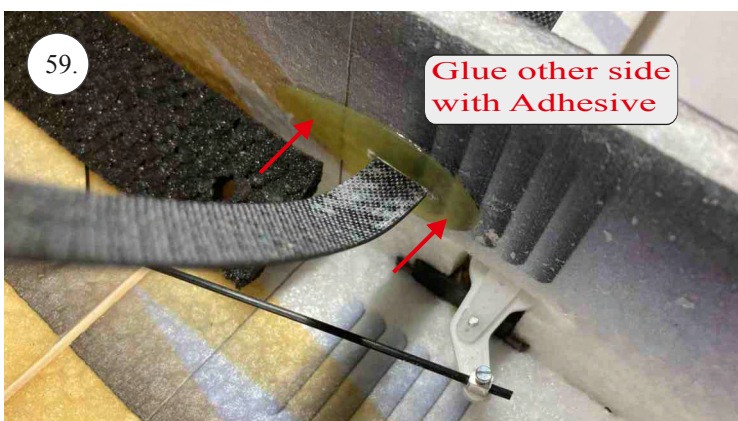
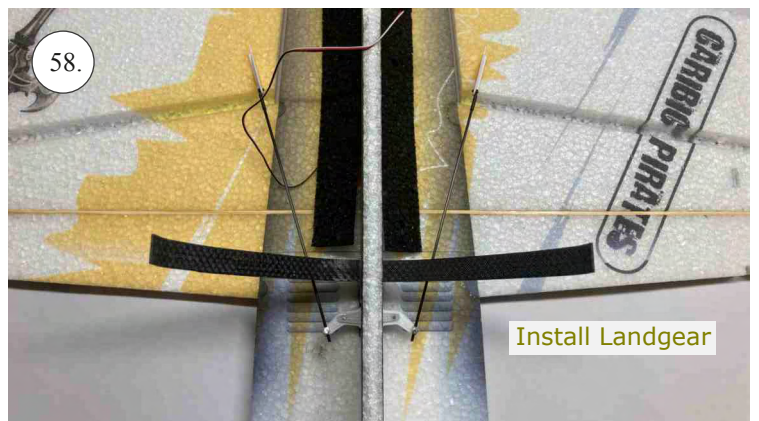
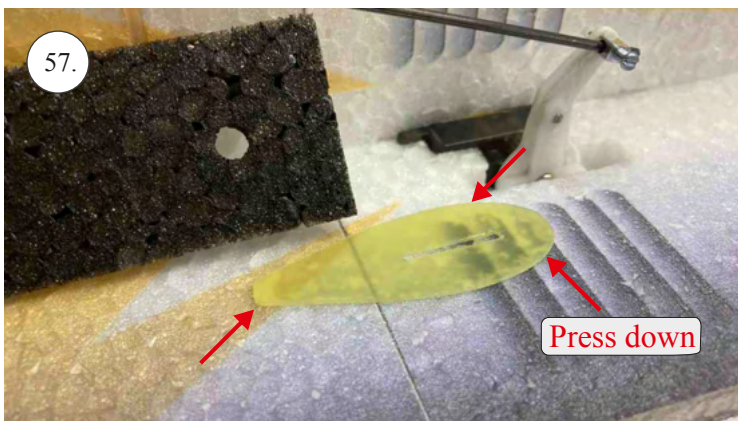
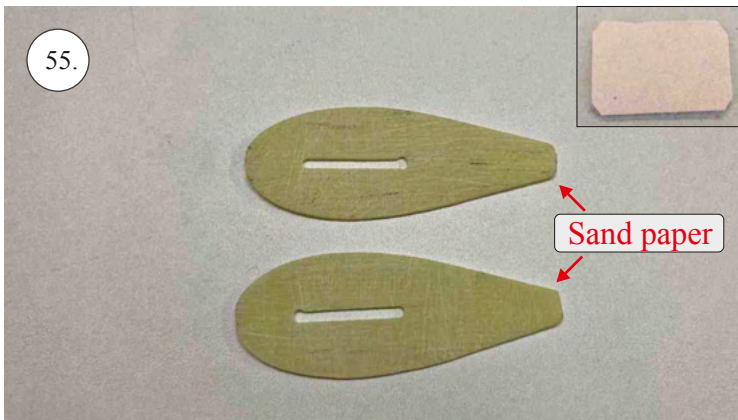
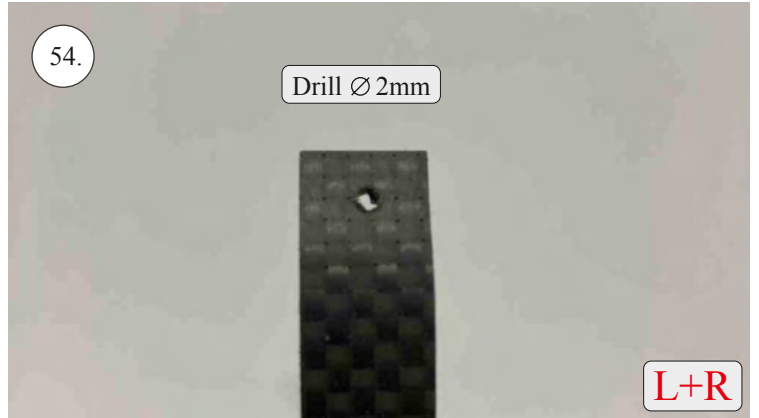
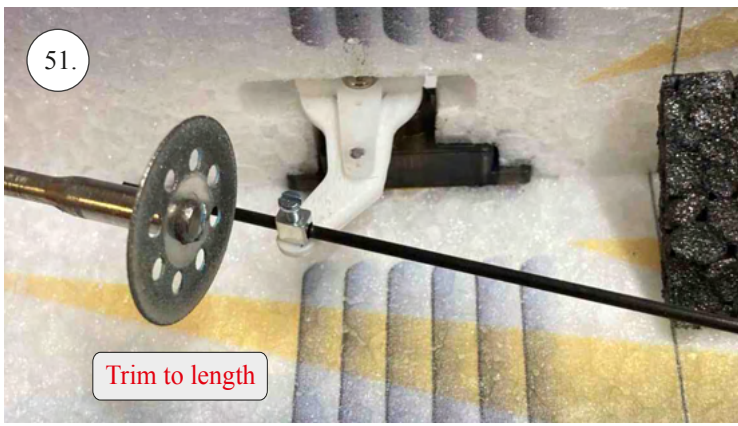
Classic Series Hardware

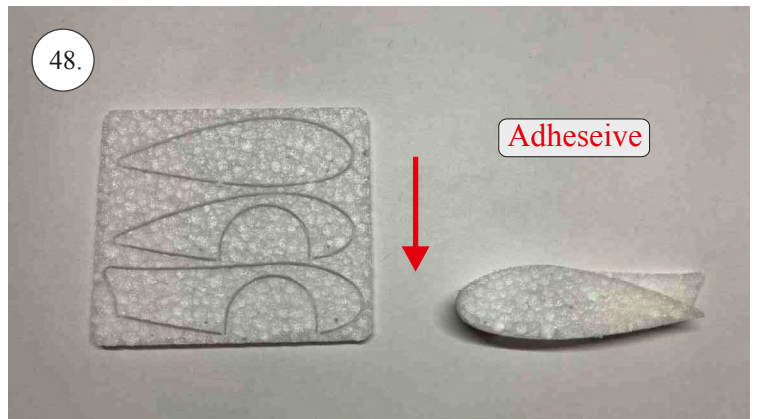
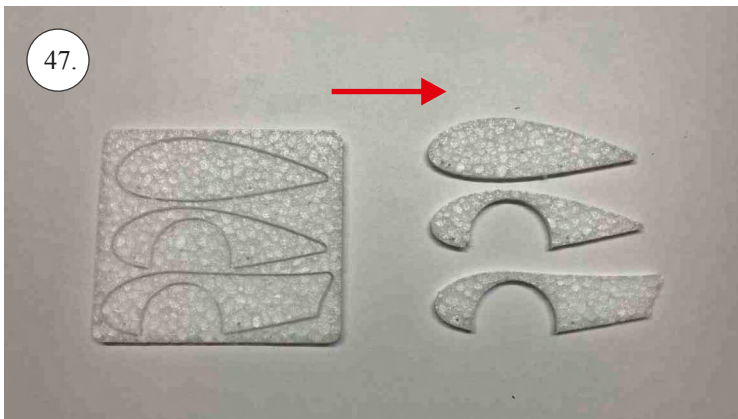
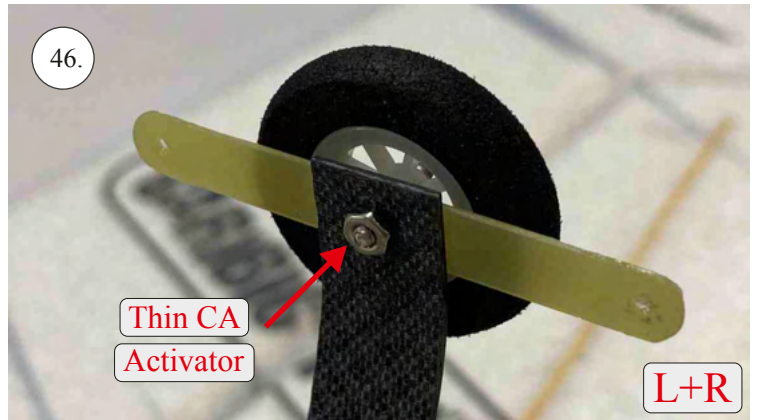
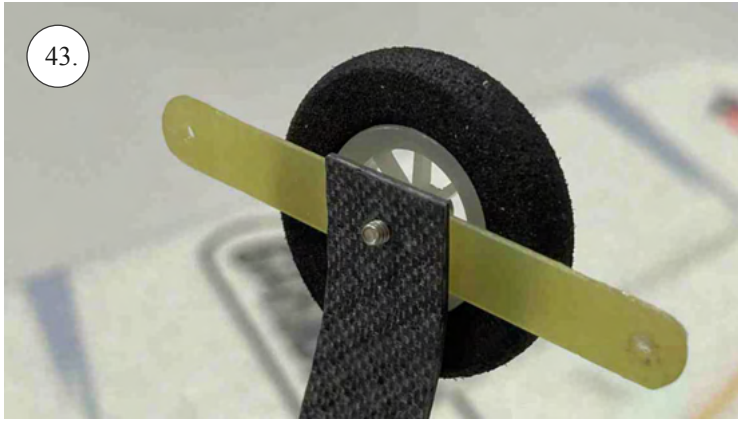
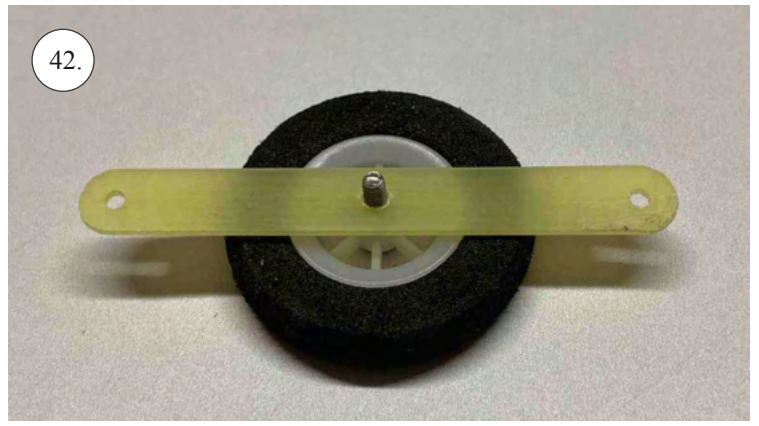


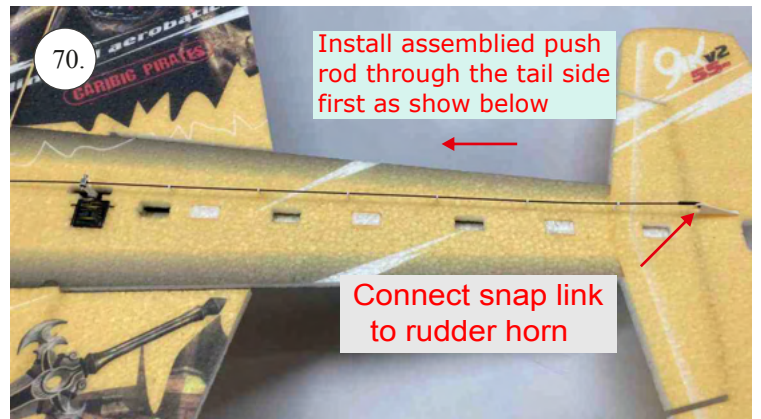
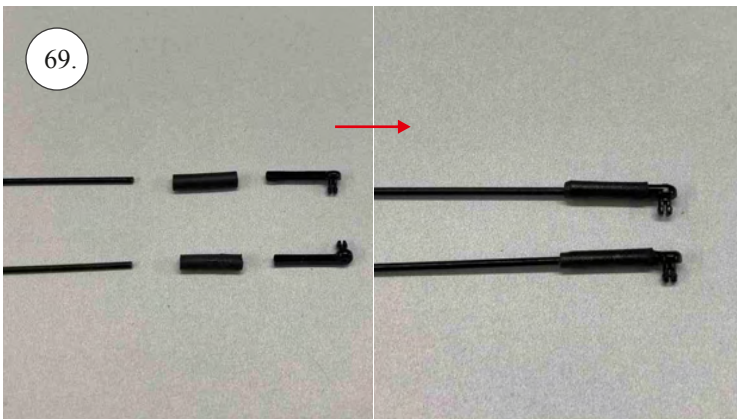
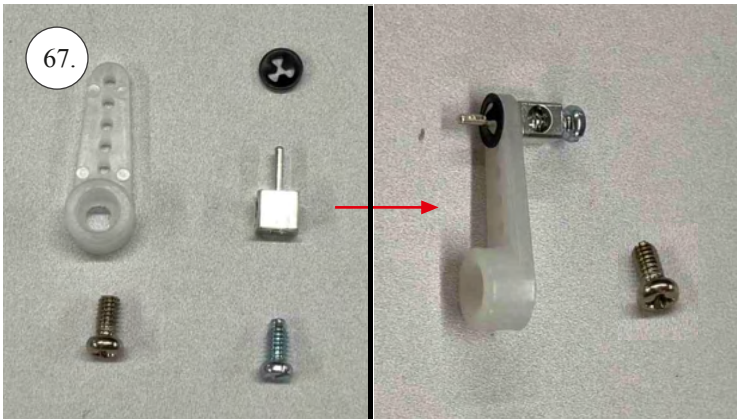
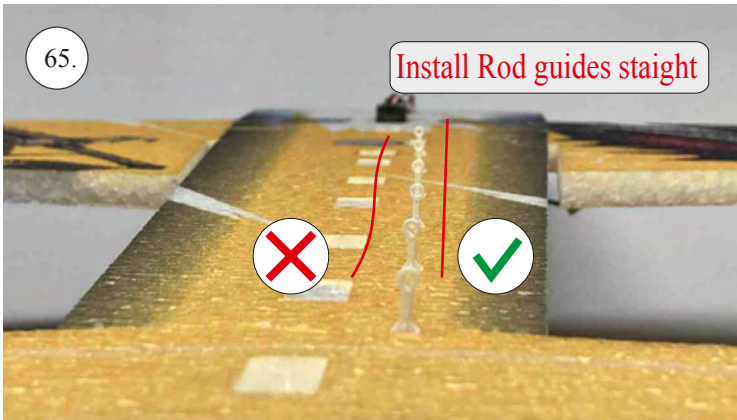
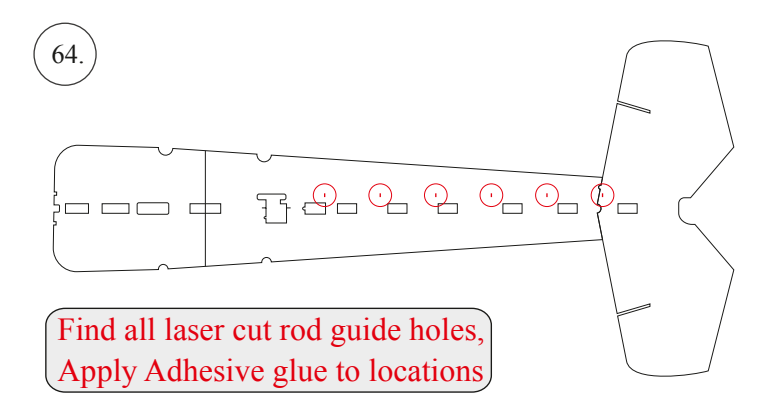
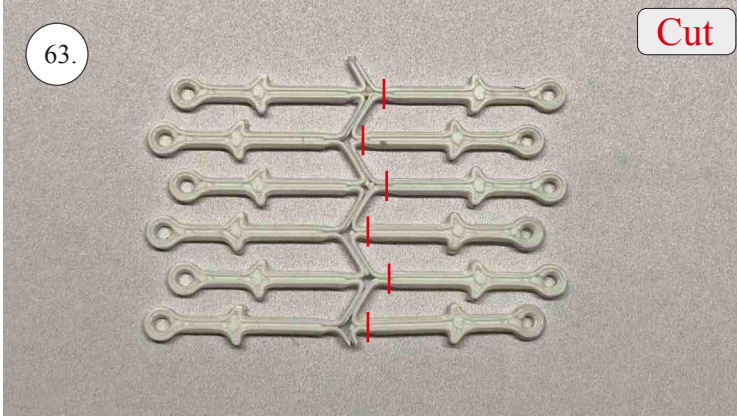


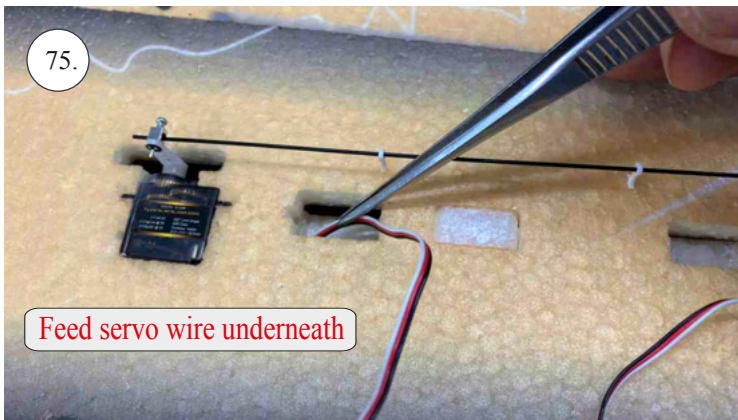
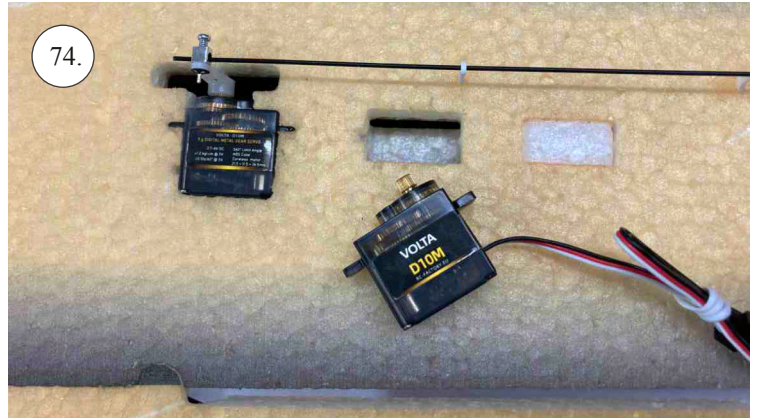
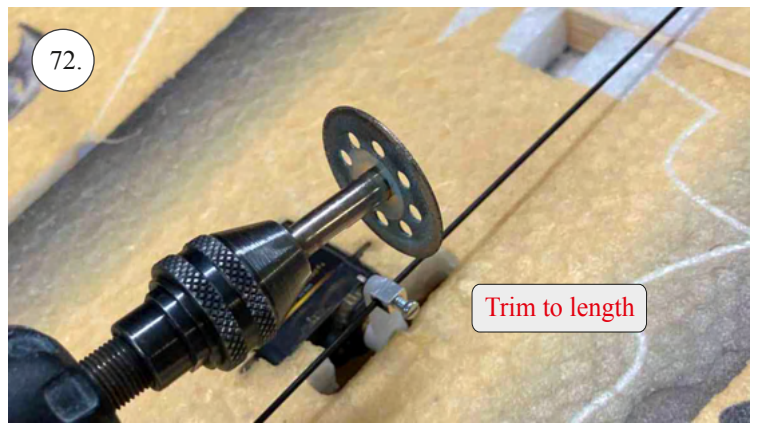


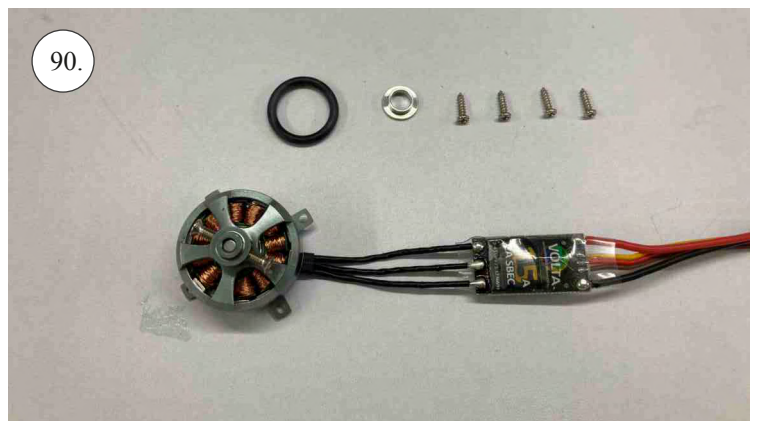
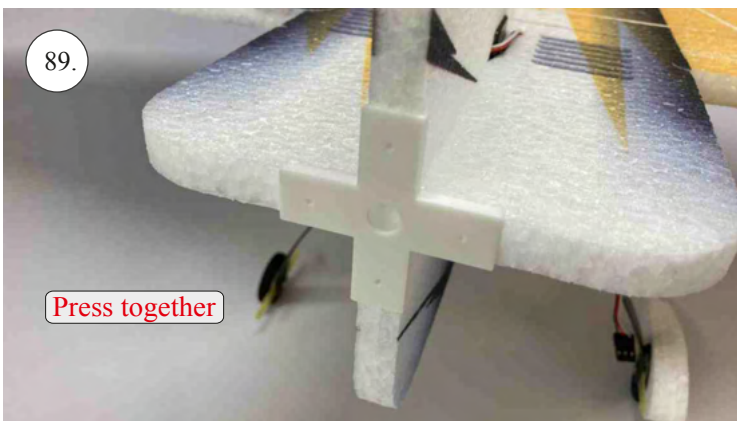
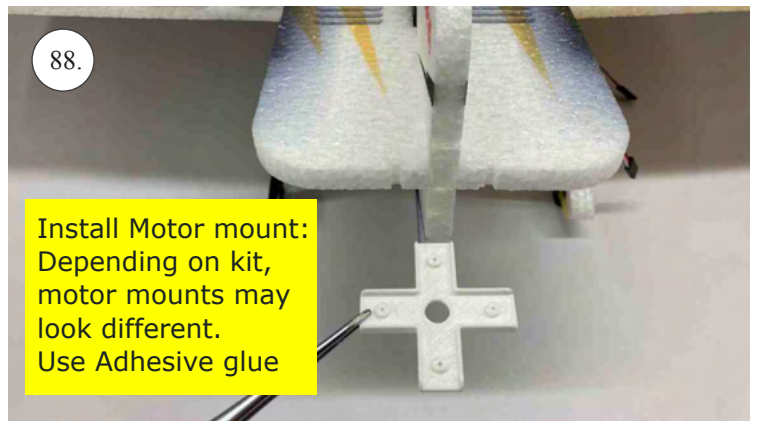
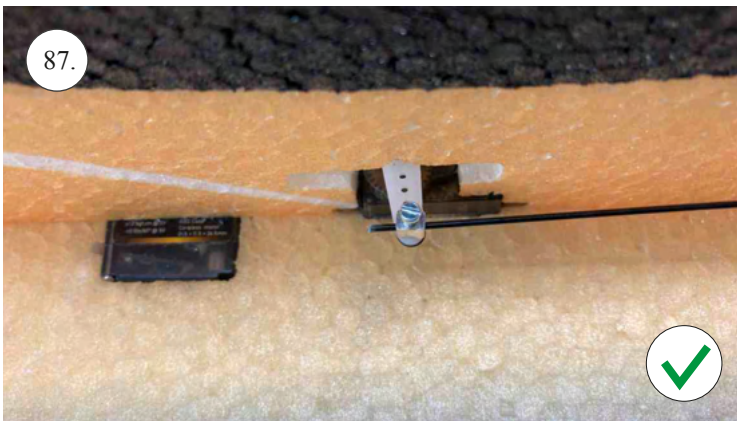
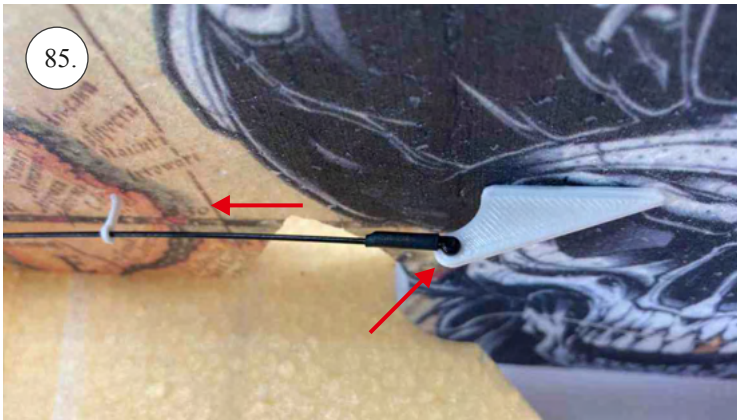
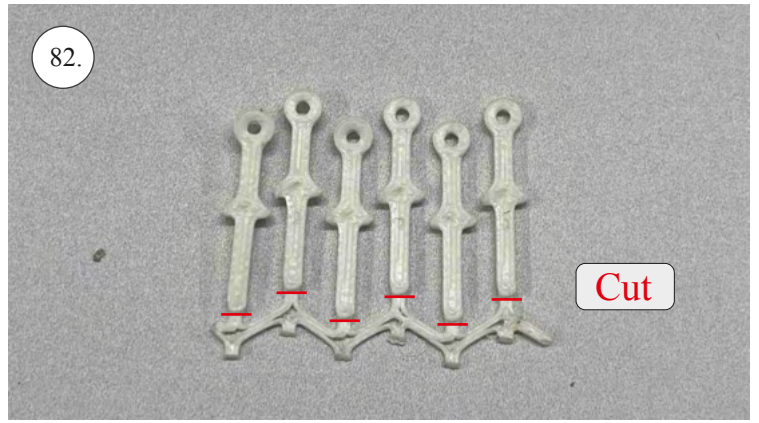
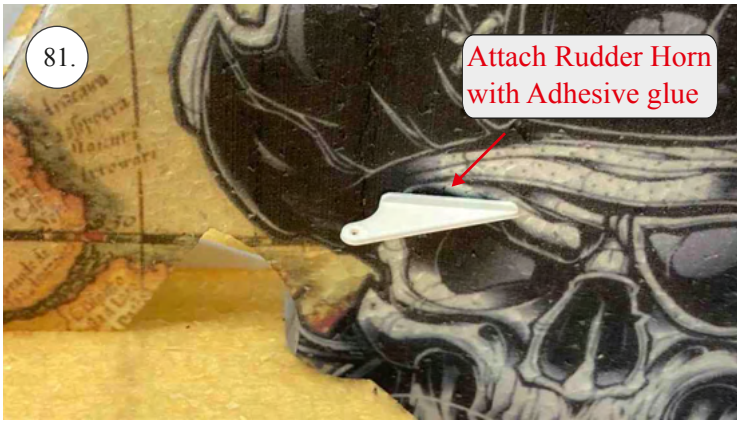


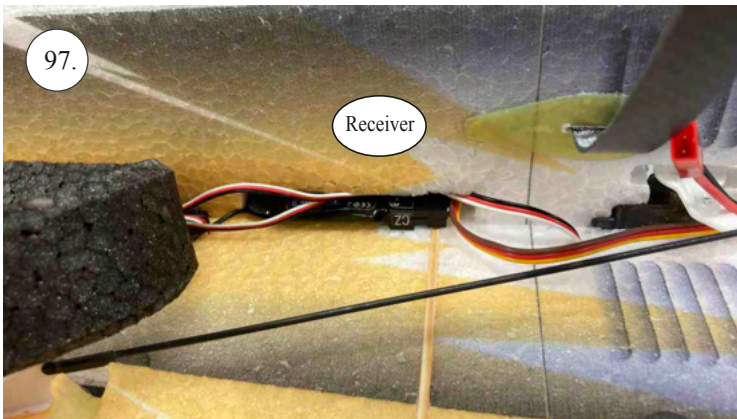
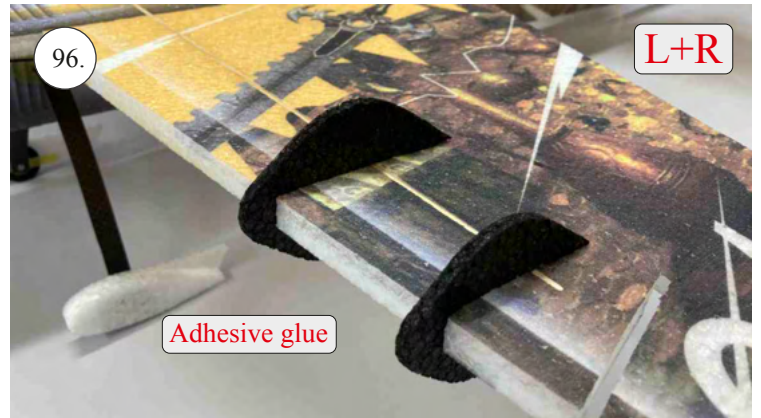
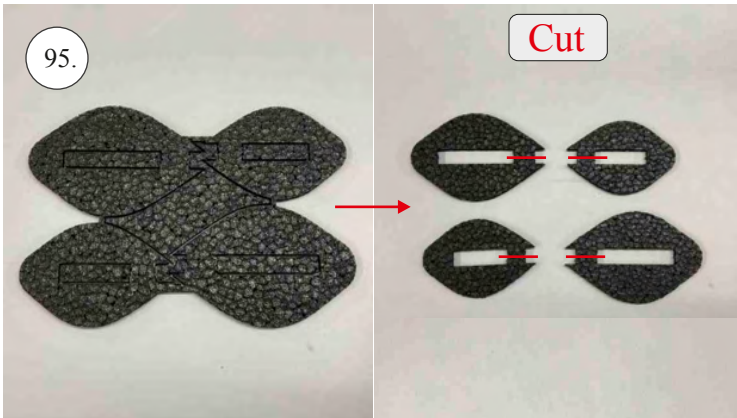
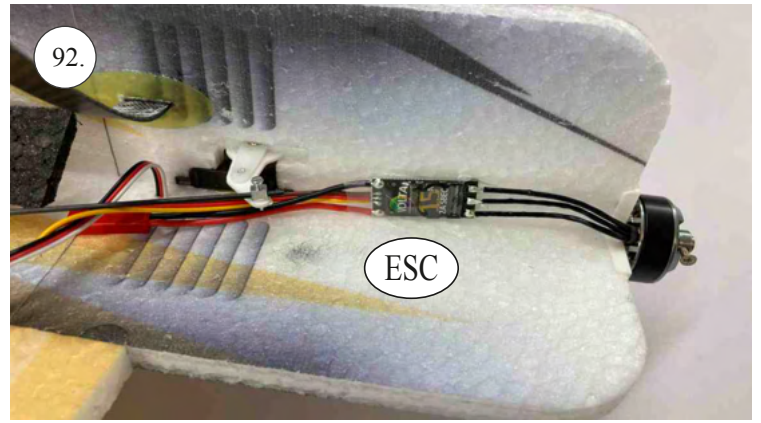
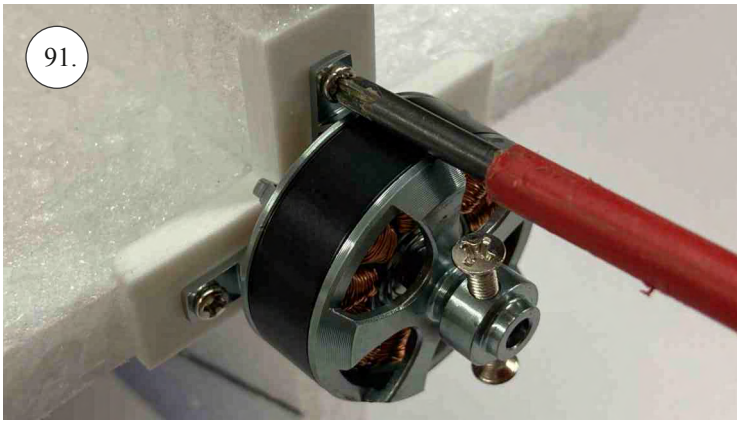


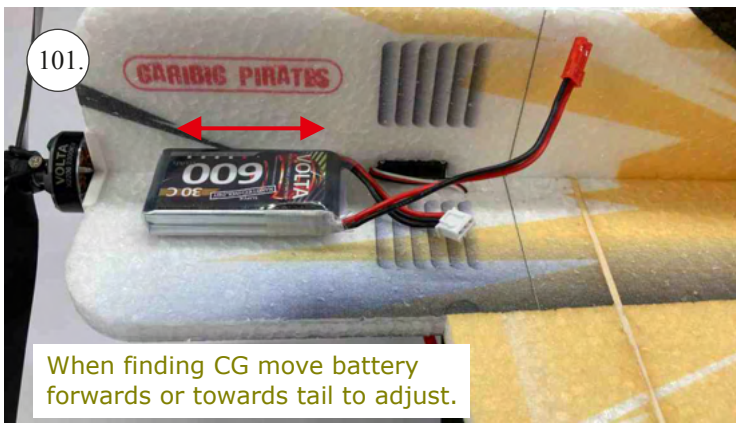








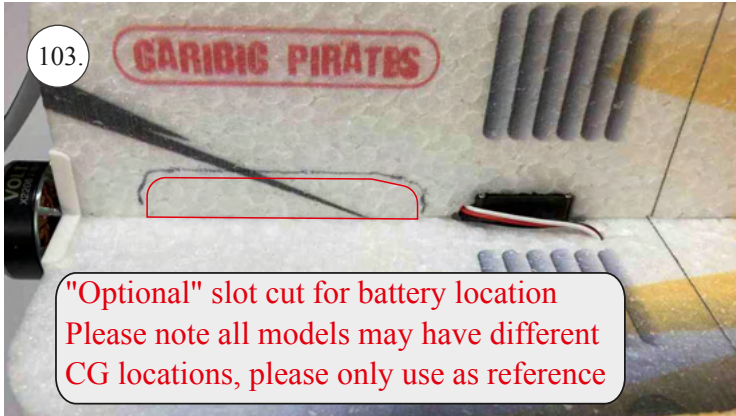




101. When finding CG move battery forwards or towards tail to adjust.



102.



103. "Optional" slot cut for battery location
Please note all models may have different CG locations, please only use as reference



104.

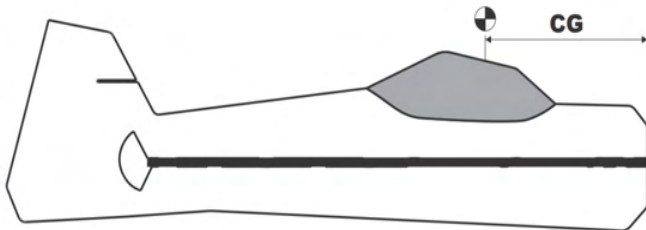
CENTER OF GRAVITY

CG = 210mm / Crack Yak 55

CG = 200mm / Edge 540

CG = 200mm / Sbach

CG = 175mm Extra Slick / Yak-55 & CAP-10



Locate all the electronic to achieve indicated CG point. Use Velcro for initial flights for battery mounting and experiment with it's position until you have determined the best spot for your flying style. For best 3D performance, balance for level flight upright and inverted with little to no elevator input. Also power off down line should be straight down without any pull or tuck.

CONTROL THROWS

Extreme & 3D

Ailerons - approx +/- 45 deg
Rudder - approx +/- 45 deg
Elevator - approx +/- 45 deg
Expo to suit

Beginner & Sport

Ailerons - approx +/- 20 deg
Rudder - approx +/- 20 deg
Elevator - approx +/- 20 deg
Expo to suit

In order to achieve the control throws as described for "Extreme and 3D, it is imperative that the control surfaces, linkages, rod ends, etc, all move freely over the entire range, including range end points.

Failure to do so will result in damage to either the servos or mechanical components

