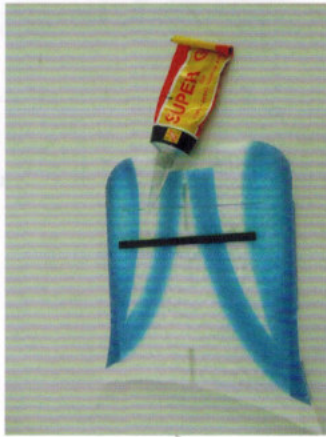
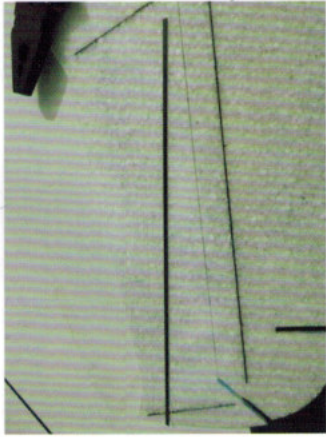
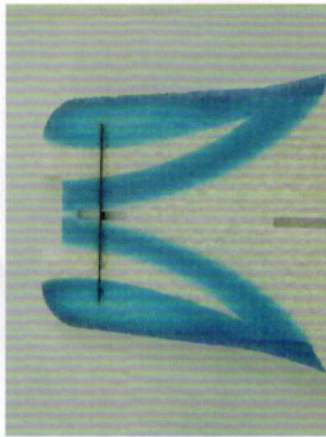


VOLADOR

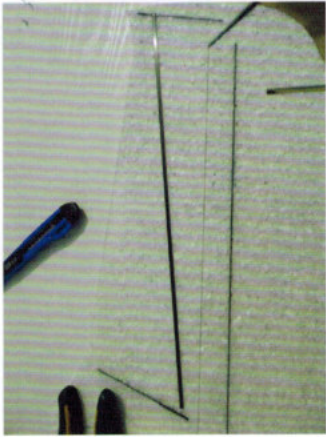
H-KING



Install the carbon strip on nose using foam glue.



Turn over the wing. Then install the carbon strip on wing using foam glue.



Same to another side.



Install the carbon strip on fuselage using foam glue.



Install the carbon strips on aileron using foam glue.



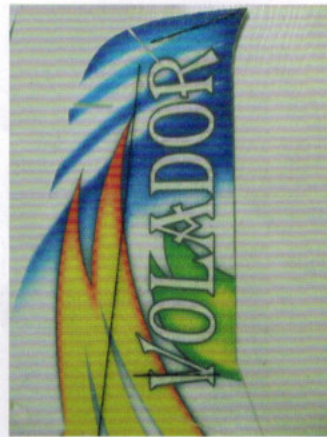
Stick the carbon strip on wing using foam glue.



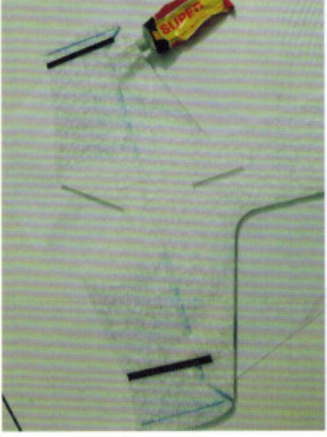
Press the strip before glue dried.



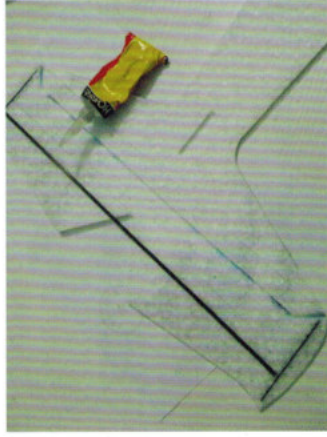
Install the 2 pcs hinges on wing with carbon strip before glue dried.



Same to another side. Then wait glue dried.



Install the 2 pcs carbon strips on tail using foam glue.



Install the carbon strip on tail aileron using foam glue.



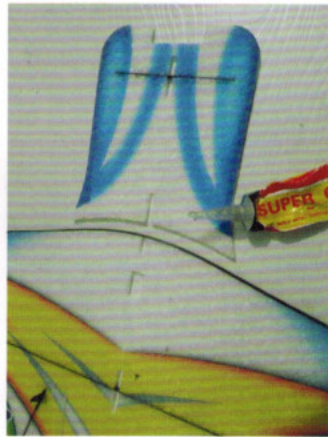
Install the carbon strip on tail using foam glue. Then wait glue dried.



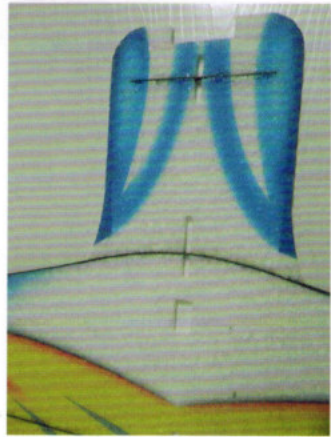
Then wait glue dried.



Install the 3 pcs carbon strips on rudder using foam glue.



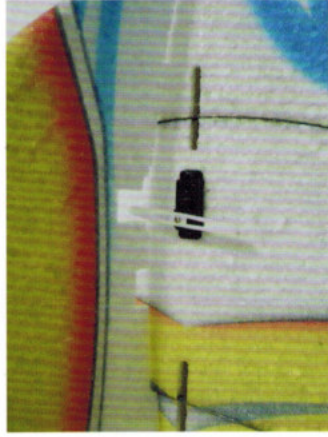
Assemble nose on wing using foam glue. Make sure the motor hole trim.



Assemble fuselage on wing using foam glue. Make sure the motor hole trim.



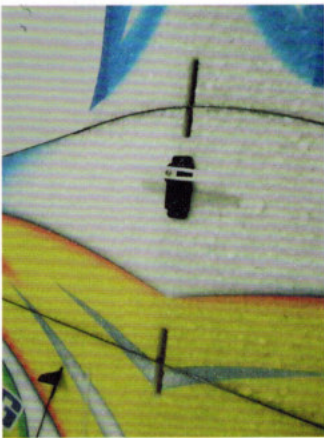
Put half horizontal fuselage on table before assemble the vertical fuselage. And press the wing.



Assemble the vertical fuselage on horizontal fuselage using foam glue.



Install 4.5/4.7g servo on fuselage using foam glue.



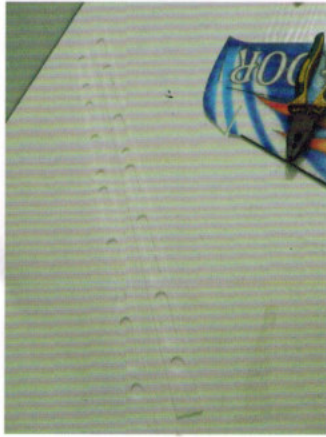
Electrify all servos to make sure the arm perpendicular to servo. Then install 8/9g servo on fuselage with long arm using foam glue.



Must check whole fuselage to ensure fuselage orthogonality before glue dry.



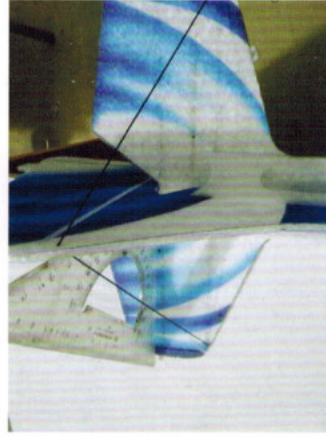
Install 4.5/4.7g servo on fuselage using foam glue.



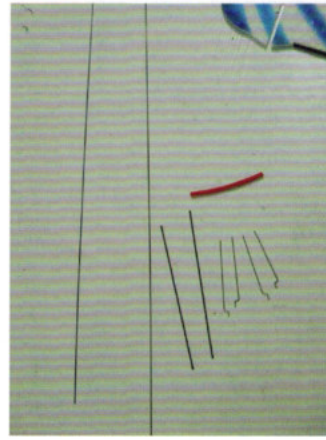
Then use the 4 pcs EPP strips to reinforce fuselage.



Assemble the EPP strip on the upper fuselage using foam glue as shown picture above.



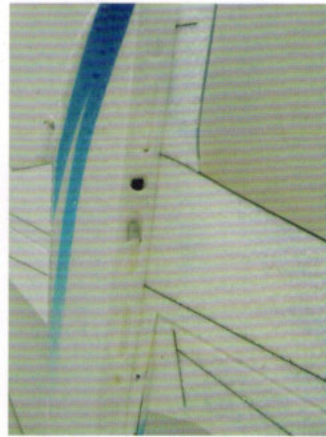
Same to another side. Make sure fuselage orthogonality.



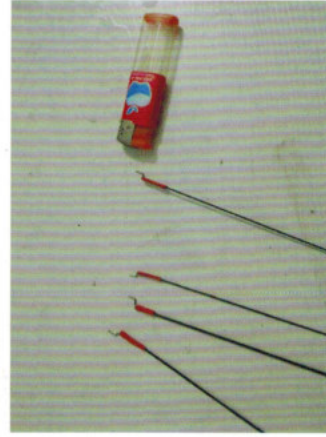
Assemble pull rod using Z-bend and carbon rod with shrinkable tube.



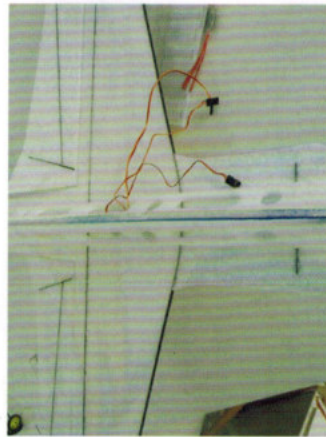
Don't let the arm touch the EPP strip.



Same way to the bottom fuselage.



Applying No.502 glue on shrinkable tube.



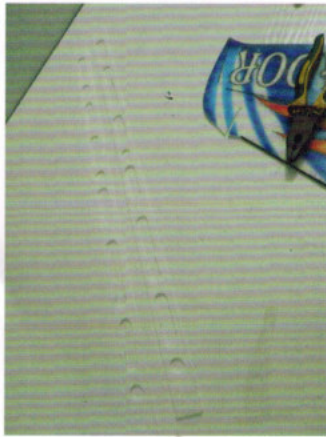
Find the hole on tail and install carbon rod in the hole using No.502 glue.



Assemble quick rod adjuster and install it on hinge (Notice the direction). Then install pull rod on servo and hinge. Cut spare carbon rod and tighten the screws (Don't force too much to avoid carbon rod broken).



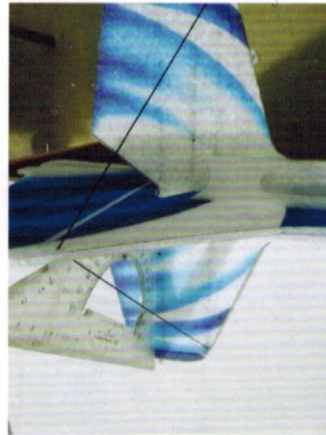
Install 3 pcs wood strips on fuselage using No.502 glue. Notice must let pull rod through the hole on wood strip.



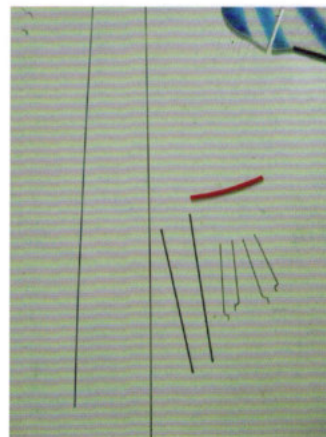
Then use the 4 pcs EPP strips to reinforce fuselage.



Assemble the EPP strip on the upper fuselage using foam glue as shown picture above.



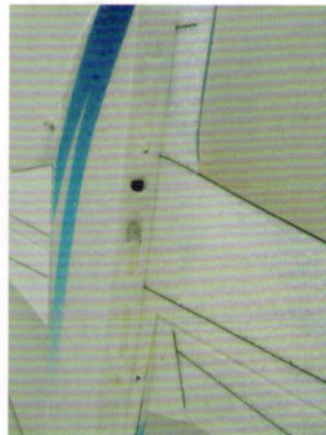
Same to another side. Make sure fuselage orthogonality.



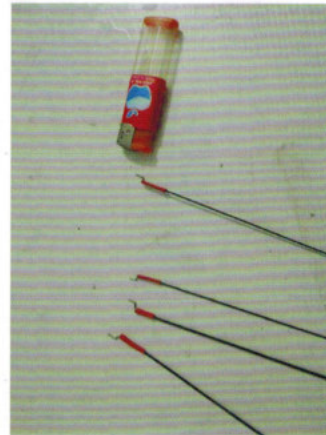
Assemble pull rod using Z-bend and carbon rod with shrinkable tube.



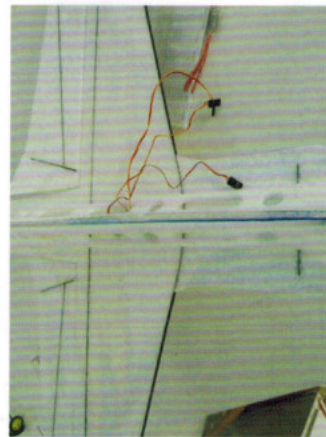
Don't let the arm touch the EPP strip.



Same way to the bottom fuselage.



Applying No.502 glue on shrinkable tube.



Find the hole on tail and install carbon rod in the hole using No.502 glue.



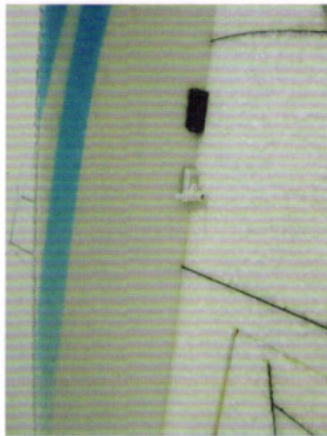
Assemble quick rod adjuster and install it on hinge (Notice the direction). Then install pull rod on servo and hinge. Cut spare carbon rod and tighten the screws (Don't force too much to avoid carbon rod broken).



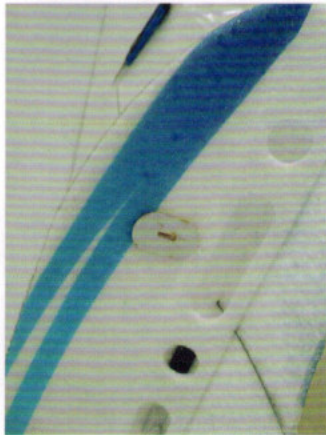
Install 3 pcs wood strips on fuselage using No.502 glue. Notice must let pull rod through the hole on wood strip.



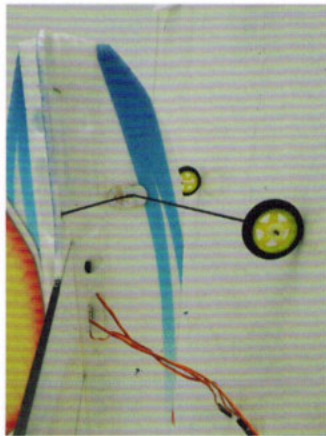
Same way to install hinge on rudder.



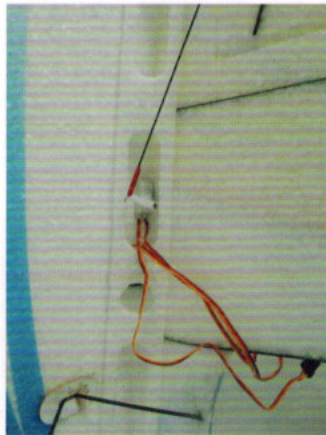
Install elevator servo using foam glue.



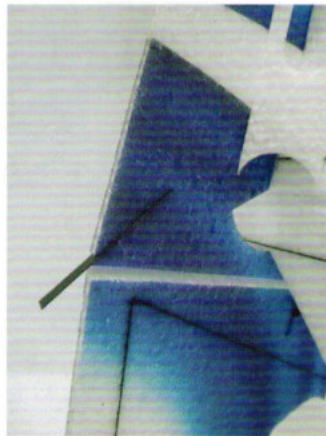
Install the 2 pcs plastic sheets on the landing gear hole on fuselage using foam glue.



let the 2 pcs landing gears cross through the hole. Then glue landing gear on wing using No.502 glue.



Adjust landing gear to make sure the wing be horizontal and then glue the hole.



Install carbon strip into the vertical tail's groove using No.502 glue. Leave parts carbon strip outside.



Cut the hinge when install hinge on elevator.



Also need install 3 pcs wood strips on fuselage using No.502 glue. Notice must let pull rod through the hole on wood strip.



Assemble motor on the metal cross using screws. Then install motor on motor mount with tapping screws (we can use servo's screws).



Then assemble motor mount on fuselage using foam glue.



Install side wing on wing using foam glue.



Install epp speed brake on tail using foam glue.

